



# SLIM-LINE

---

## INDOOR CYLINDERS

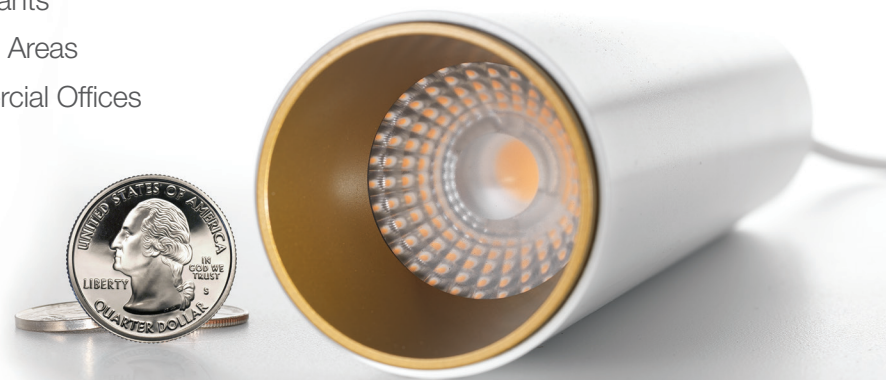
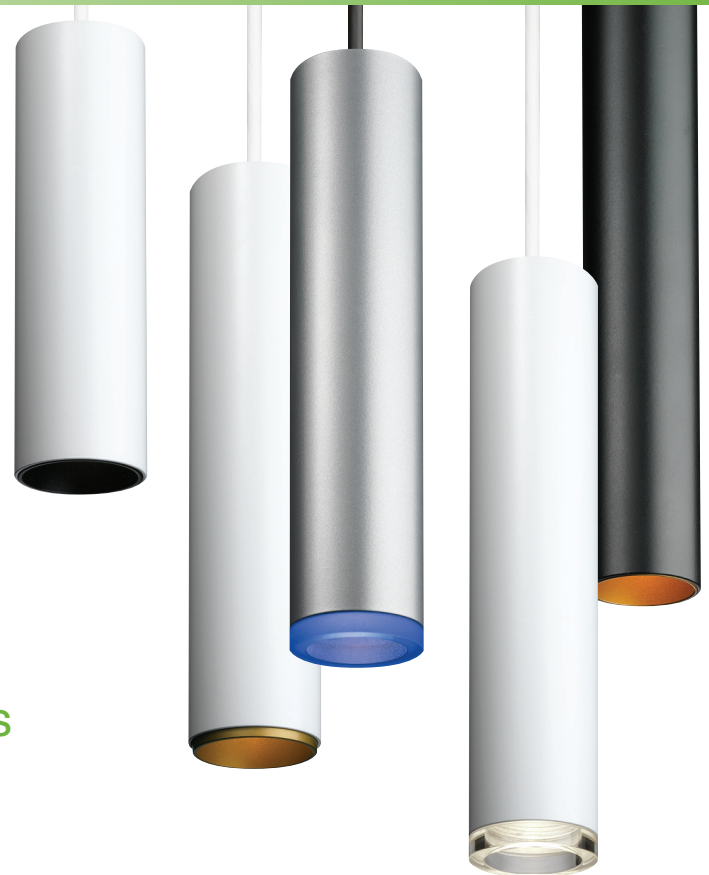
The **Slim-Line Indoor Cylinders** are our ultra-clean, light weight cylinder family engineered without visible seams or fasteners in both 1.5" and 2" diameters. These cylinders are available in cord and surface mounts for install in dry or damp locations. The wide range of finishes and trim options offer stylish solutions for various application settings.

Decorative design to fit any look.



### APPLICATIONS

- Hospitality
- Retail
- Lobbies
- Task Lighting
- Display Environments
- Restaurants
- Meeting Areas
- Commercial Offices



# SLIM-LINE

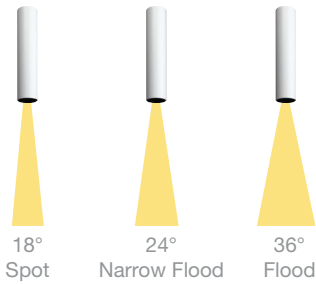
## INDOOR CYLINDERS



1.5" Cylinders  
Cord Mount

LUMENS/CCT  
 • 800 lm Max (13W)  
 • 27K, 3K, 35K, 4K

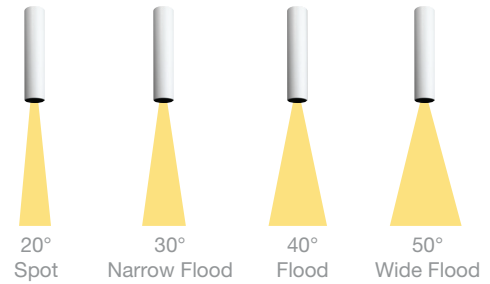
OPTICS



2" Cylinders  
Cord Mount

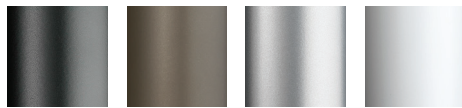
LUMENS/CCT  
 • 900 lm Max (11W)  
 • 27K, 3K, 35K, 4K

OPTICS



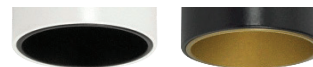
2" Cylinders  
Surface Mount

FINISHES



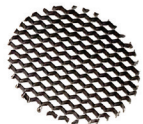
Black Bronze Silver White

BAFFLES



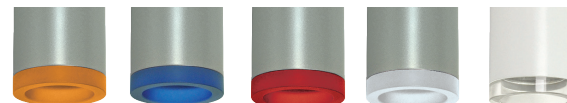
Black Gold

LOUVER



Black

GLOW RINGS



Amber Blue Red Frosted Clear