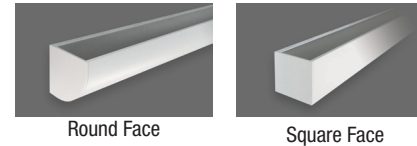


CREATE-A-COVE - INSTALLATION INSTRUCTIONS

CAUTION: BEFORE CONNECTING THE FIXTURE TO A POWER SUPPLY, MAKE SURE THE POWER IS SWITCHED OFF.

Installation works for both Round & Square Create-A-Cove installation.

DETAILED ILLUSTRATION



SSL
solid state luminaires

corporate
t (877) SSL-GREEN
f (630) 889-8106
3609 Swenson Ave.
St. Charles, IL 60174

GENERAL:

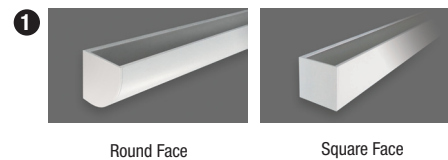
1. Before starting the installation, make sure all electricity has been turned off and electrical breaker has been locked out and tagged out.
2. To ensure the success of the installation, be sure to read these instructions and review the diagrams thoroughly before beginning.
3. All electrical connections must be in accordance with local codes, ordinances, or the National Electrical Code.
4. These fixtures are intended to be mounted to a J-Box directly supported by the building structure.

NOTE: The important safeguards and instructions appearing in this manual are not meant to cover all possible conditions and situations that may occur.

TOOLS NEEDED

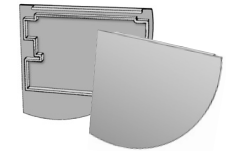
1. You'll need linear 2-part Create-A-Cove Mounting Plate with linear Round or Square Face Plate.
2. A manual Level or we suggest a Laser when installing corners.
3. Philips screwdriver and Drill.
4. 1/8" Drill bit and provided 8/32 Set Screws and Driver.
5. Light-leak Inserts and Alignment Keys (provided).
6. A Mitre Saw for making straight cuts in the field.
7. The Linear Indoor Luminaire fixtures (sold separately).
8. Starter Cord (SC06) and Terminator Cap (TCAP), one set required for each linear lighting run (refer to CoveLine spec sheets for maximum linear run lengths).
9. 1/4" Foam Tape for mounting on uneven surfaces.
10. You'll need two installers for working with long linear Mounting Plate and Face Plate extrusions.

TOOLS NEEDED



Included if needed:

- Round or Square End Caps for ending runs



Items included:

- 1) Light-leak Tab Inserts
- 2) Alignment with Screws
- 3) Touchup Paint
- 4) Foam Tape (.5"W x .25H)
- 5) 8/32 Set Screws, 5/64 Hex Driver



Create-A-Cove
5 min Install
Video



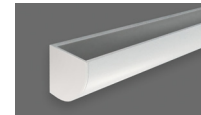
JF Rev 1118

CREATE-A-COVE - INSTALLATION INSTRUCTIONS

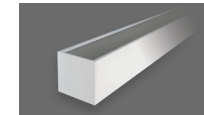
CAUTION: BEFORE CONNECTING THE FIXTURE TO A POWER SUPPLY, MAKE SURE THE POWER IS SWITCHED OFF.

Installation works for both Round & Square Create-A-Cove applications.

DETAILED ILLUSTRATION



Round Face



Square Face

SSL
solid state luminaires

corporate
t (877) SSL-GREEN
f (630) 889-8106
3609 Swenson Ave.
St. Charles, IL 60174

GENERAL:

1. Before starting the installation, make sure all electricity has been turned off and electrical breaker has been locked out and tagged out.
2. To ensure the success of the installation, be sure to read these instructions and review the diagrams thoroughly before beginning.
3. All electrical connections must be in accordance with local codes, ordinances, or the National Electrical Code.
4. These fixtures are intended to be mounted to a J-Box directly supported by the building structure.

NOTE: The important safeguards and instructions appearing in this manual are not meant to cover all possible conditions and situations that may occur.

INSTALLATION

IMPORTANT: Interior Locations Only. Use two people for installation.

1. Determine where your electrical feed will start.

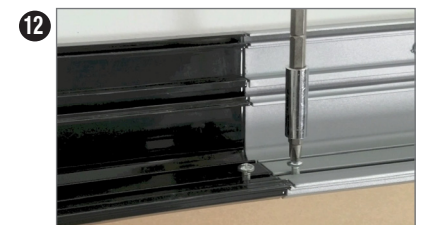
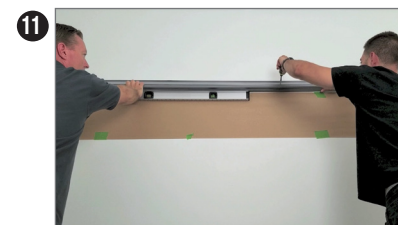
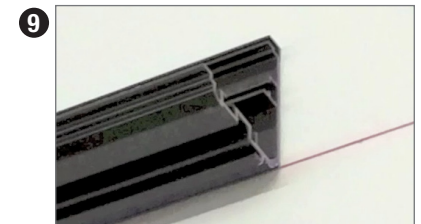
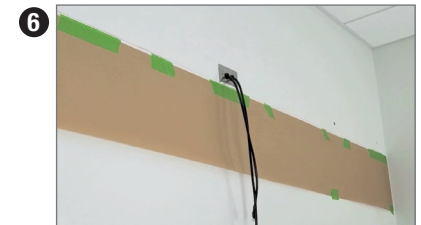
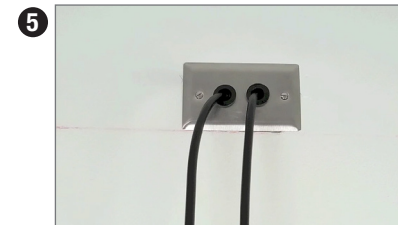
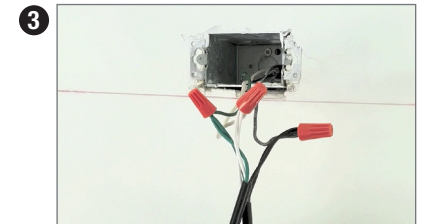
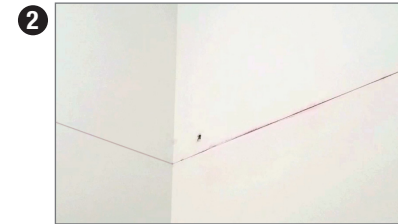
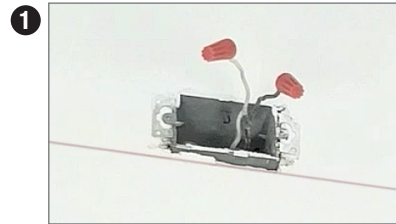
IMPORTANT: Follow NEC and local codes. Wiring for CoveLine requires a Ground (green), Neutral (white) and Line Voltage (black).

NOTE: J-box can be set inline with your back mounting plate for clean hidden appearance or located adjacent to the linear run.

2. Mark the hanging surface with a level line. A manual level is fine for straight runs, we suggest a laser level for leveling corners.
3. Connect wiring from Starter Cord (SC6) to the J-box; Ground (green), Neutral (white) and Line Voltage (black).
4. Test the Starter Cord wiring connection with CoveLine fixture.
5. If wiring test is good, attach J-box cover plate.

NOTE: Create-A-Cove is a finished product and can be applied to already finished surfaces. To avoid fingerprints or marking during installation consider adding masking paper with painters tape. **See Fig. 6**

7. Apply 1/4 inch Foam Tape to the back of the Mounting Plate, the side that will face the wall surface. This will make up for any irregularities in the wall surface.
8. Use a level while placing the Mounting Plate on the wall.
- 9–10. Set lower point of the Mounting Plate to your level line.
11. Maintaining level, set Anchors (supplied by other) and begin fastening the Mounting Plate to the wall.
12. Use provided Alignment Keys in lower channel to align sections.

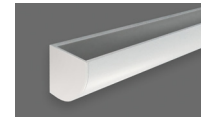


CREATE-A-COVE - INSTALLATION INSTRUCTIONS

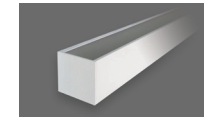
CAUTION: BEFORE CONNECTING THE FIXTURE TO A POWER SUPPLY, MAKE SURE THE POWER IS SWITCHED OFF.

Installation works for both Round & Square Create-A-Cove applications.

DETAILED ILLUSTRATION



Round Face



Square Face

SSL
solid state luminaires

corporate
t (877) SSL-GREEN
f (630) 889-8106
3609 Swenson Ave.
St. Charles, IL 60174

INSTALLATION Continued

13. Maintain level if you plan on jumping the J-box with the Mounting Plate for a clean looking installation. This may require making cuts in the field to the Mounting Plate.

NOTE: When the installation is complete Mounting Plate will be completely covered by the Round or Square Face Plate.

14. Set loose Starter Cord wires up into Mounting Plate track.

IMPORTANT: If installing inside or outside corners. The corner sets ship assembled. Loosen the Set Screws a little on the bottom of the Face Plate prior to setting your anchors on the wall surface. This allows some play in the two Mounting Plates to accommodate imperfect wall corners.

15. Loosen Set Screws on Face Plate before corner installation.

16. Allow some play for imperfect corners.

17. Don't completely tighten screws holding Corner Mounting Plate until the adjoining mounting plates are perfectly aligned.

18. Use the Alignment Key to align the Mounting Plates. Then tighten the anchor screws to the wall.

19. Using two people, attach the Round or Square Face Plate to the Mounting Plate.

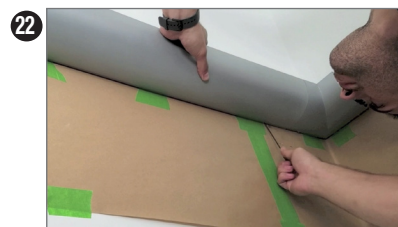
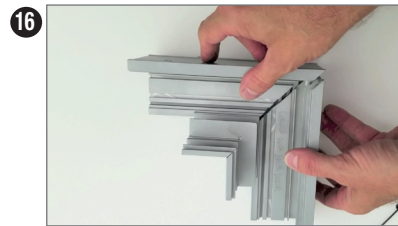
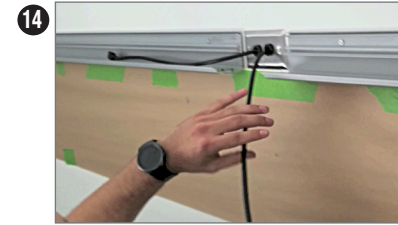
NOTE: There are grooves on the Face Plate and Mounting Plate that interconnect to hold the Face Plate in place. This can be seen more clearly in the 5 min. installation video. **See Fig. 20**

Video Link: <https://youtu.be/ocM2ZQSI0ZM>

21. Once Face Plate is attached tighten 8/32 Set Screws on bottom to secure the Face Plate to the Mounting Plate.

22. Use 8/32 Driver provided to avoid overtightening or stripping the set screws with an electric tool. Set Screws are short and tighten quickly.

23. Continue with your linear run maintaining level installation.

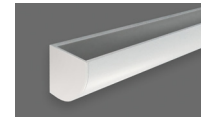


CREATE-A-COVE - INSTALLATION INSTRUCTIONS

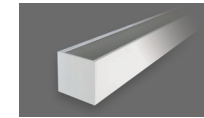
CAUTION: BEFORE CONNECTING THE FIXTURE TO A POWER SUPPLY, MAKE SURE THE POWER IS SWITCHED OFF.

Installation works for both Round & Square Create-A-Cove applications.

DETAILED ILLUSTRATION



Round Face



Square Face

SSL
solid state luminaires

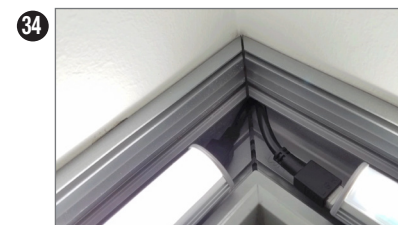
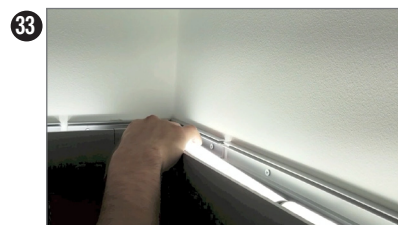
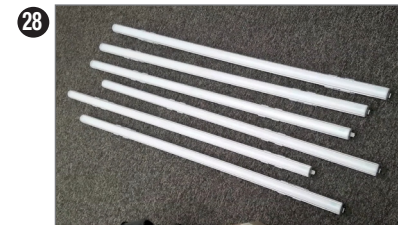
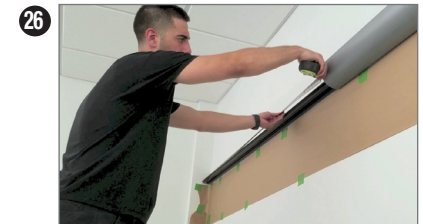
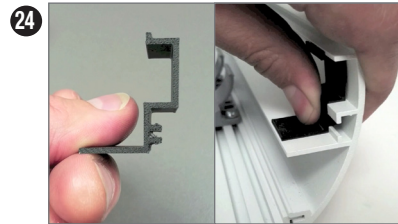
corporate
t (877) SSL-GREEN
f (630) 889-8106
3609 Swenson Ave.
St. Charles, IL 60174

INSTALLATION Continued

24. Install Light-leak Inserts to guard against any light leaks at the seams. This will also help align the top edges of the Face Plates.
 25. Light-leak Inserts snap into the upper channels of the Face Plate.
 26. When taking the final measurement for the last Face Plate piece in your linear run, be as accurate as possible to achieve a seamless edge-to-edge installation, and to give it a clean finished look.
- NOTE:** Use a fine bladed saw for making field cuts to Face Plate.
27. Depending on the Face Plate cut size, you may need to add another set screw hole using your 1/8 inch Drill Bit and the 8/32 inch Tap.
 28. Unpackage the CoveLine fixtures to prepare for installation.
 29. Start your linear lighting run in the direction that your electrical is running.
 30. The CoveLine fixtures easily fit into the Create-A-Cove housing.
 31. Connect the Starter Cord to linear CoveLine fixture. CoveLine is a line voltage, linear plug-n-play system that can be daisy chained together in long linear runs.
 32. Use 4-foot fixtures for the long runs and use the 1-foot fixtures to make up the smaller space of your linear run.
 33. Adjust cove lighting fixtures in and out of the corners to a referred light pattern. Typical adjustment is 3" to 6" away from the corner.
 34. Extension Cords are nestled into the bottom of the Create-A-Cove track.
 35. Remove wall masking.

For reference:

Video Link: <https://youtu.be/ocM2ZQSI0ZM>

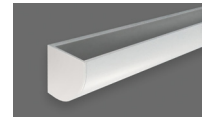


CREATE-A-COVE - INSTALLATION INSTRUCTIONS

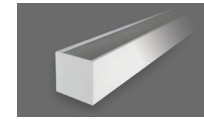
CAUTION: BEFORE CONNECTING THE FIXTURE TO A POWER SUPPLY, MAKE SURE THE POWER IS SWITCHED OFF.

Installation works for both Round & Square Create-A-Cove applications.

DETAILED ILLUSTRATION



Round Face



Square Face

SSL
solid state luminaires

corporate
t (877) SSL-GREEN
f (630) 889-8106
3609 Swenson Ave.
St. Charles, IL 60174



Create-A-Cove
5 min Install
Video

