

<b>Date:</b>	<b>Approved:</b>
<b>Type:</b>	
<b>Luminaire:</b>	
<b>Project:</b>	

**COLOURLINE WET**  
Exterior RGBW Luminaire



**SPECIFICATIONS**

<b>color temperature</b>	<b>RGBW / Tunable White</b>
<b>PHYSICAL</b>	
<b>beam spread</b>	6°, 10°, 10° x 30°, 10° x 40°, 15° x 30°, 30° x 60°, 40° x 40°, 30° x 20°, 40° x 15°, 60° x 20°
<b>LEDs</b>	12 per foot - (3) red, (3) green, (3) blue, (3) white
<b>weight</b>	1 foot (2.8 lbs), 4 foot (10.4 lbs)
<b>housing</b>	anodized marine grade, extruded aluminum housing, die cast end caps sealed with bonded silicone gaskets; stainless steel fasteners
<b>lens</b>	tempered glass - IK07 Rating
<b>mounting</b>	extruded aluminum and stainless steel surface mount brackets; standard provides 80° of tilt; optional 180° tilt bracket available
<b>ingress protection</b>	dry, damp or wet locations IP66 rated : connectors IP68 (waterproof)
<b>vibration resistance</b>	compliant with 3G ANSI C136.31 for bridge and roadway applications
<b>luminaire connections</b>	daisy chain with male and female twist and lock 5-PIN, IP68 rated connectors

**PERFORMANCE**

<b>lumen output [ all on ]</b>	650 lm per foot (15W), 300 lm per foot (8W) @ 100% all colors
<b>lumen maintenance</b>	L70 > 70,000 hours
<b>operating temperature</b>	-49°F to 104°F (-45°C to 40°C)
<b>protocols</b>	DMX 512, RDM (ANSI E1.20)
<b>ColourQuick (CQ)</b>	provides uniform beam saturation 3" from luminaire surface (1.5" on center from vertical surface)
<b>ColourClone (CC)</b>	manufacturing process uses robotic systems to provide 1 SDCM like consistency between luminaires by calibrating every luminaire to the same exact X, Y, chromaticity coordinates
<b>ColourSoft (CS)</b>	embedded firmware enables 16-bit resolution using only 8-bits of data to enhance the low trim curve for no-flicker at the slowest transition speeds
<b>ColourMode (CM)</b>	RGBW and Tunable White in one luminaire using 6 DMX channels Channels 1-4 - RGBW, Channels 5-6* - Tunable White (Channel 5 = intensity and Channel 6 = CCT) <i>*Tunable White mode must use the entire luminaire as one unit</i>
<b>warranty</b>	5-Year limited warranty

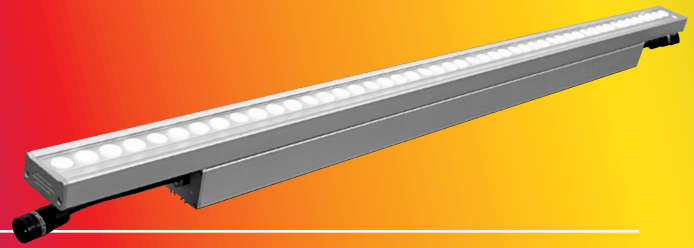
**ELECTRICAL**

<b>input voltage</b>	Universal 120 - 277 VAC
<b>power supply</b>	integral Class II, electronic high-power factor 99% @ 120V
<b>controls</b>	SSL ColourSelect, 3rd party DMX 512, RDM standard based control system
<b>certification</b>	ETL / cETL, FCC Part 15
<b>standards</b>	UL-Class I
<b>power consumption</b>	15W @ 120V / 1ft - ( 54W @ 120V / 4ft), 8W @ 120V / 1ft - ( 24.5W @ 120V / 4ft)



Due to continuous development and improvements, specifications are subject to change without notice.  
Product use certifies agreement to Solid State Luminaires terms and conditions.

# Ordering Information



## PART NUMBERS

CLWET		RGBW							
MODEL	LENGTH	COLOR	OUTPUT	OPTICS	OPTIONS (CHOOSE 1)				
CLWET COLOURLINE WET	1 12 in. [305 mm]	RGBW	RGBW	15W 15W/ft	6 6° beam	3020	30° x 20° beam	CLWFA	180° Adj. Bracket
	4 48 in. [1219 mm]	RGBW-TW	RGBW & Tunable White	8W 8W/ft	10 10° x 10° beam	3060	30° x 60° beam	CLWL-1	1 ft CLWET Louver
		TW	Tunable White		1030 10° x 30° beam	4015	40° x 15° beam	CLWL-4	4 ft CLWET Louver
					1040 10° x 40° beam	40	40° x 40° beam	CLWHS-1	1 ft CLWET Louver w/House Shield
					1530 15° x 30° beam	6020	60° x 20° beam	CLWHS-4	4 ft CLWET Louver w/House Shield

\*Louver & House Shield not recommended for 10° x 40°, 30° x 60°, 40° x 15°, 40°, 60° x 20°

## Cable Accessories (order separately)

**REQUIRED:** Each linear run requires a Starter Cable and Terminator Cap. See page 7 for maximum run length.

_____ <b>SC10CLW</b> 10 ft. Starter Connection Cord	_____ <b>TCAPDCLW</b> Data Terminator Cap (includes 120 Ω resistor)	_____ <b>EC60CLW</b> 60 in. (5 ft.) Extension Cord
_____ <b>SC25CLW</b> 25 ft. Starter Connection Cord	_____ <b>DB25CLW</b> 25 ft. Data Bridge Cable	_____ <b>EC120CLW</b> 120 in. (10 ft.) Extension Cord
_____ <b>SC50CLW</b> 50 ft. Starter Connection Cord	_____ <b>EC12CLW</b> 12 in. (1 ft.) Extension Cord	_____ <b>EC240CLW</b> 240 in. (20 ft.) Extension Cord
	_____ <b>EC24CLW</b> 24 in. (2 ft.) Extension Cord	

## Mounting Options (order separately)

_____ <b>CA2-6</b> Cantilever Arm - 6"	<b>Luminaire</b>	<b>CA2 Requirement</b>	_____ <b>HLS</b> Heavy Duty Landscape Spike
_____ <b>CA2-12</b> Cantilever Arm - 12"	<b>1-foot</b>	1	
_____ <b>CA2-18</b> Cantilever Arm - 18"	<b>4-foot</b>	2	

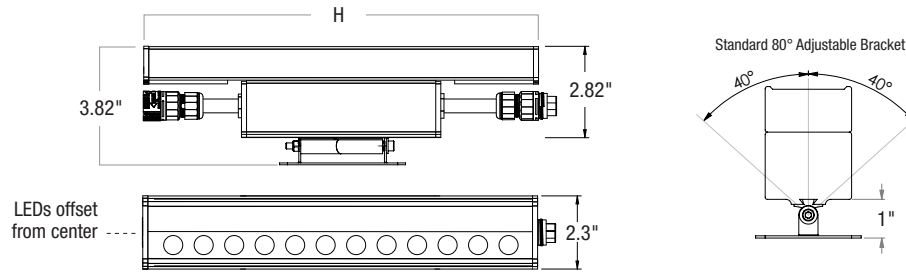
## Control Components (Indicate the quantity needed for each item.)

_____ <b>PHAROS TPS-5-B</b> 5" Designer Touch Panel Station	_____ <b>DE3BK(WH)</b> Nicolaudie STICK DE-3 Black or White Wall Mount Controller w/color dial
_____ <b>PHAROS XPC1</b> Expert Controller; 512 channels of eDMX/DMX	_____ <b>CW4-WH</b> Nicolaudie STICK White Touch Screen with Internal WiFi
_____ <b>PHAROS XPC2</b> Expert Controller; 1024 channels of eDMX/DMX	_____ <b>GA2WH(BK)</b> Nicolaudie STICK-GA2 White or Black Wall Mount Controller
_____ <b>PHAROS XPT-5-B</b> Expert Touch Panel; 5" Display in Black	_____ <b>DXC-25</b> 25 foot DMX cable
_____ <b>PHAROS TPC-BB</b> Touch Panel Controller - Black on Black (512 Channels EDMX)	_____ <b>DXC-50</b> 50 foot DMX cable
_____ <b>PHAROS EXT</b> Extension for TPC Connectivity	_____ <b>DXC-100</b> 100 foot DMX cable
_____ <b>PHAROS LPC1</b> Lighting Playback Controller 1 (512 channels DMX/eDMX)	_____ <b>CD-10</b> 10 foot controller data cable (for CSC only)
_____ <b>PHAROS LPC2</b> Lighting Playback Controller 2 (1,024 channels DMX/eDMX)	_____ <b>CD-25</b> 25 foot controller data cable (for CSC only)
_____ <b>PDX2</b> Power Data Wiring Box (exterior rated)	_____ <b>CD-50</b> 50 foot controller data cable (for CSC only)
_____ <b>PDX-RDS2</b> Power Data Wiring Box w/2-port splitter	_____ <b>CD-100</b> 100 foot controller data cable (for CSC only)
_____ <b>PDX-RDS4</b> Power Data Wiring Box w/4-port splitter	_____ <b>MV 5900</b> Multiverse Show Baby DMX Wireless Bridge (Indoor)
_____ <b>SCSC-2WH (2BK)</b> White or Black Wall Mount ColourSelect Controller (2 universe)	_____ <b>7400-5707M</b> Show DMX Vero DMX Wireless Bridge (Exterior)
_____ <b>CSC-E</b> ColourSelect Controller (2 universe)	

Controller Data Cables/DMX Cables listed are exterior rated cables.  
(Belden 3105A or equivalent) CD-XX cables have male XLR at one end.

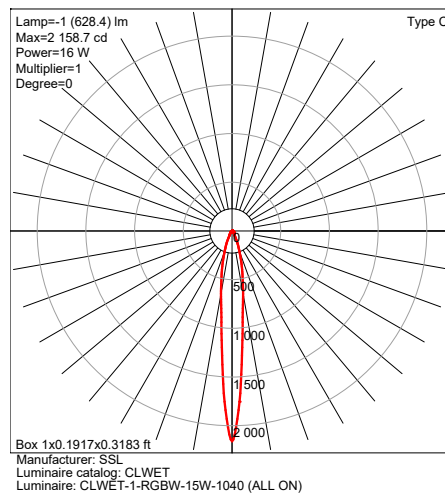
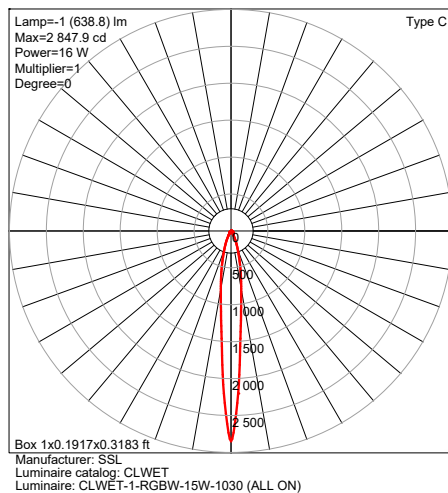
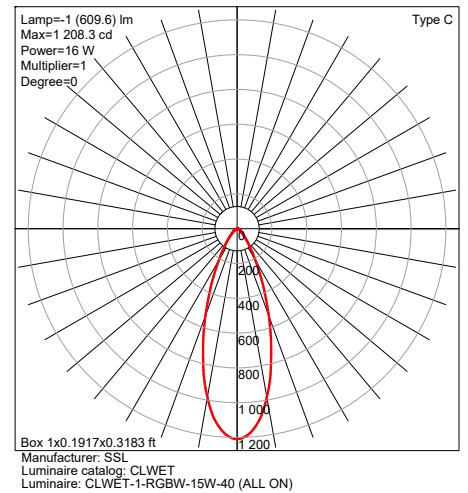
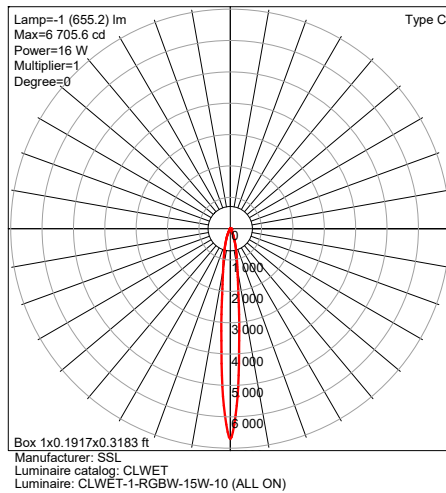
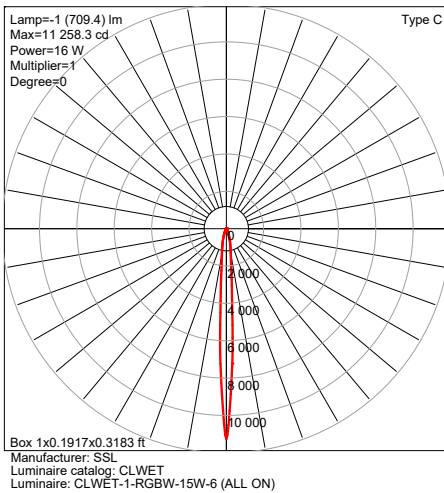
## DIMENSIONS WITH STANDARD BRACKET

luminaire length 1' and 4'  
 H = 12" (1') and 48" (4')

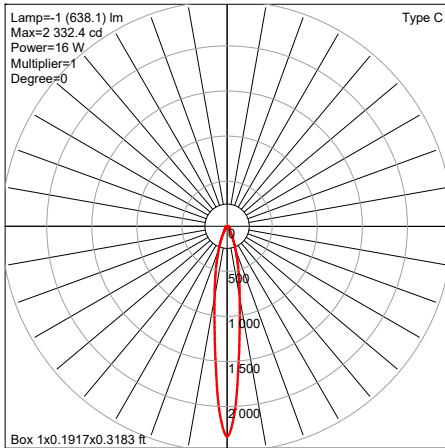


# Photometry

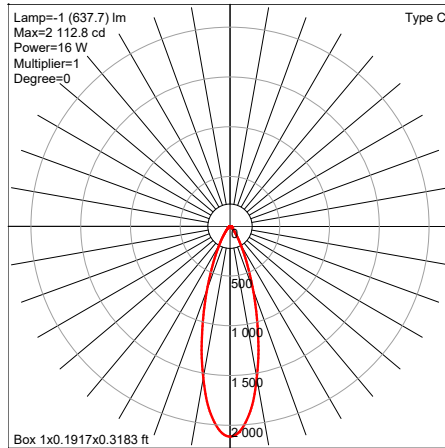
## CLWET 1FT RGBW



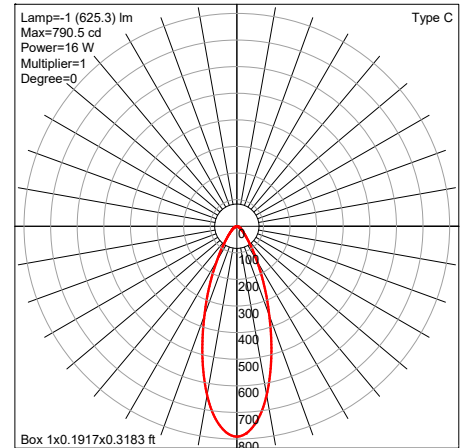
CLWET 1FT RGBW



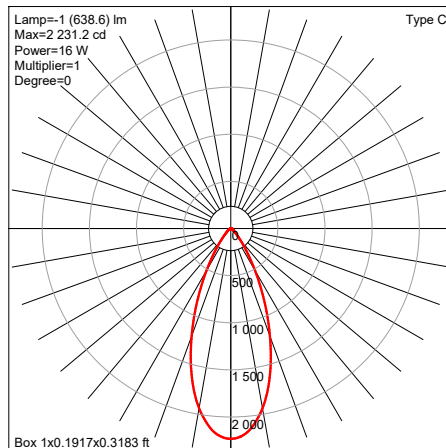
Manufacturer: SSL  
Luminaire catalog: CLWET  
Luminaire: CLWET-1-RGBW-15W-1530 (ALL ON)



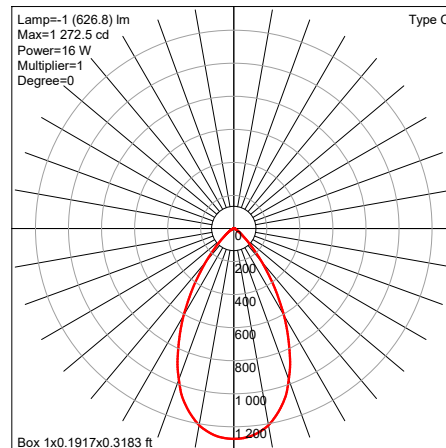
Manufacturer: SSL  
Luminaire catalog: CLWET  
Luminaire: CLWET-1-RGBW-15W-3020 (ALL ON)



Manufacturer: SSL  
Luminaire catalog: CLWET  
Luminaire: CLWET-1-RGBW-15W-3060 (ALL ON)

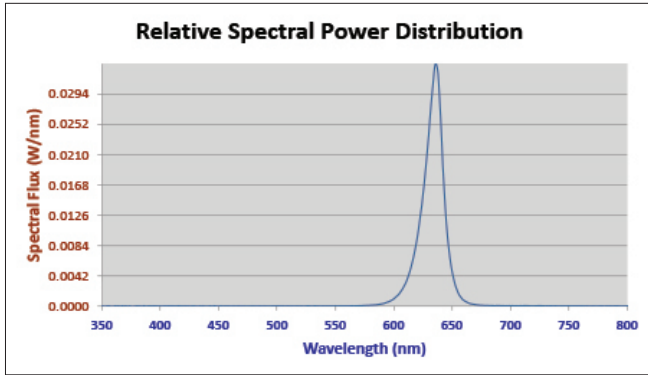


Manufacturer: SSL  
Luminaire catalog: CLWET  
Luminaire: CLWET-1-RGBW-15W-4015 (ALL ON)

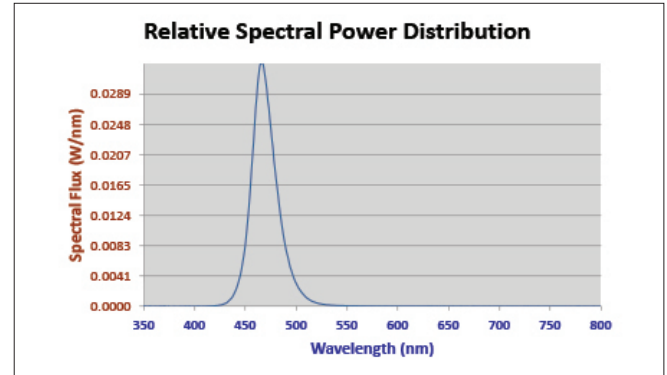


Manufacturer: SSL  
Luminaire catalog: CLWET  
Luminaire: CLWET-1-RGBW-15W-6020 (ALL ON)

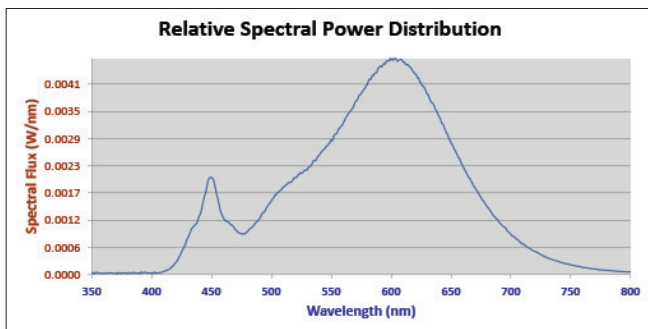
## SPECTRAL INFORMATION



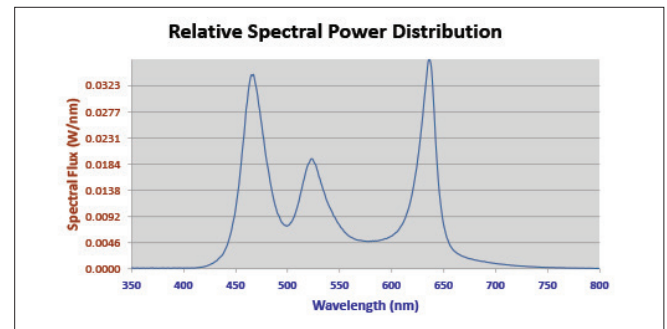
RED	
Dominant Wavelength	625
Peak Wavelength	636
Chromaticity Difference	N/A



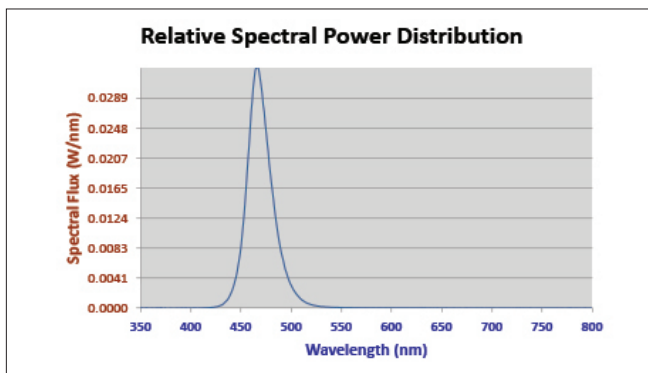
WHITE	
Dominant Wavelength	582
Peak Wavelength	603
Chromaticity Difference	0.0005



GREEN	
Dominant Wavelength	530
Peak Wavelength	523
Chromaticity Difference	0.1548



ALL ON	
Dominant Wavelength	475
Peak Wavelength	636
Chromaticity Difference	-0.0065



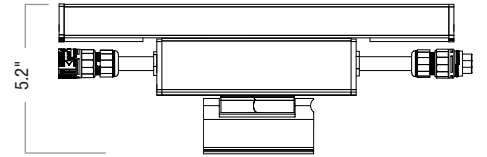
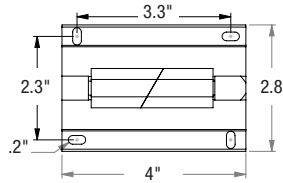
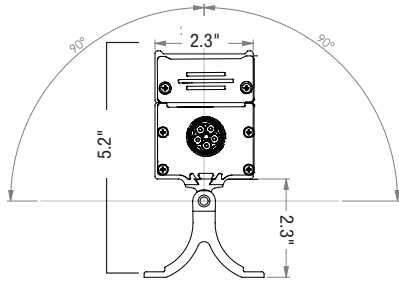
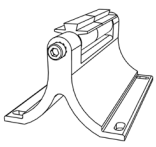
BLUE	
Dominant Wavelength	471
Peak Wavelength	466
Chromaticity Difference	0.1619

Due to continuous development and improvements, specifications are subject to change without notice.  
Product use certifies agreement to Solid State Luminaires terms and conditions.

# Mounting & Accessory Options

**ColourLine Wet**

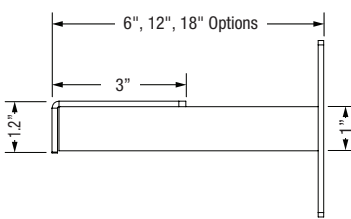
## CLWFA - FULL 180° ADJUSTABLE BRACKET



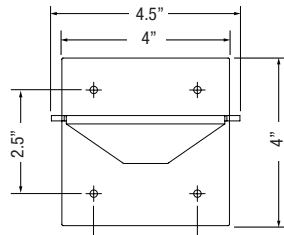
CLWET	CLWFA Requirement
1'	1
4'	2

## CANTILEVER ARM - CA2 (Available in 3 Lengths)

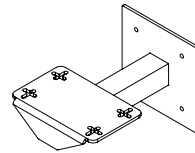
CA2	arm length	Luminaire	CA2 Requirement
CA2-6	6"	1-foot	1
CA2-12	12"	4-foot	2
CA2-18	18"		



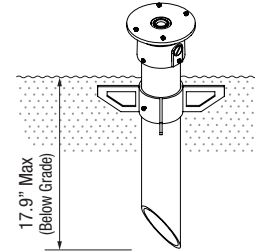
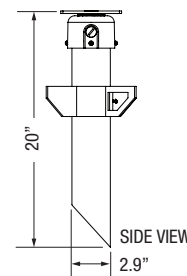
SIDE VIEW



FRONT VIEW

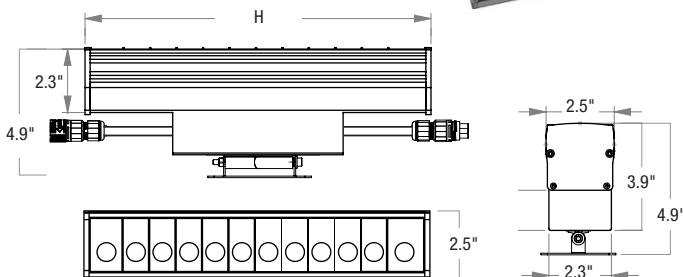


## HEAVY DUTY LANDSCAPE SPIKE - HLS



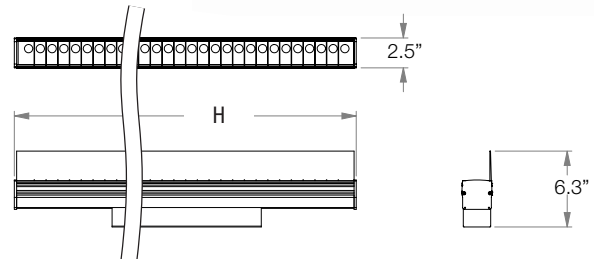
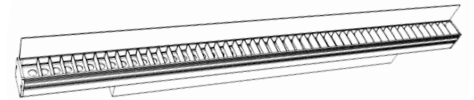
## LOUVRE - CLWL

louvre length = H	12.7"	48.4"
louvre width	2.5"	



## HOUSE SHIELD - CLWHS

house shield length = H	12.7"	48.4"
house shield width	2.5"	



### CONNECTIONS & CABLES

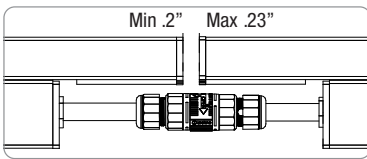
#### LINEAR LIGHTING RUN

Male / Female connectors on luminaire are used to make linear lighting runs by being connected End-to-End, to create an even linear light pattern.




#### GAP BETWEEN CONNECTED FIXTURES

Luminaires connect closely together to ensure runs have an even linear light pattern.



#### TERMINATOR CAP (TCAPDCLW)

Required Terminator Cap is used at the end of each linear lighting run. (Female Connector)

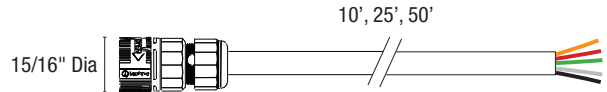
(contains 120 ohm resistor)  15/16" Dia



**HAND TIGHTEN ONLY  
DO NOT OVERTIGHTEN**

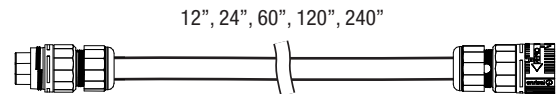
#### STARTER CORD (SCxxCLW)

Required Starter Cord comes in multiple lengths with a luminaire connector at one end and lead wires at the other end for connecting power & data.



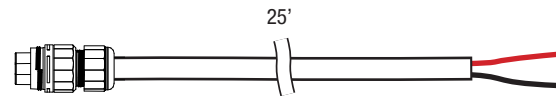
#### EXTENSION CORD (ECxxCLW)

The Extension Cord comes in multiple lengths with a luminaire connection at each end for power & data and adding space between luminaires in a linear run.



#### DATA BRIDGE CABLE (DBxxCLW)

Provides continuation of DMX Data only, from the end of one run to the PDX box of the next run. Luminaire connection at one end and lead wires at the other.



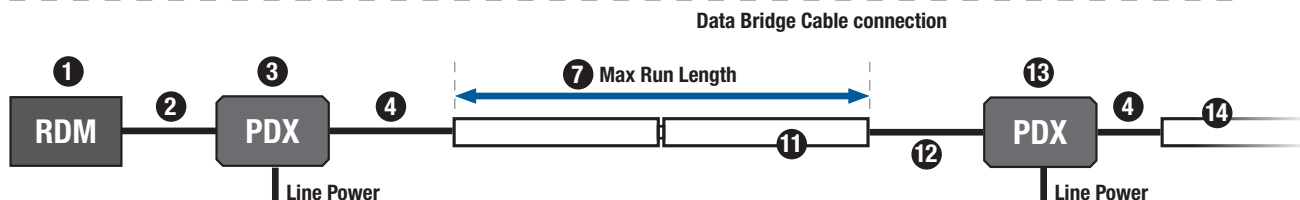
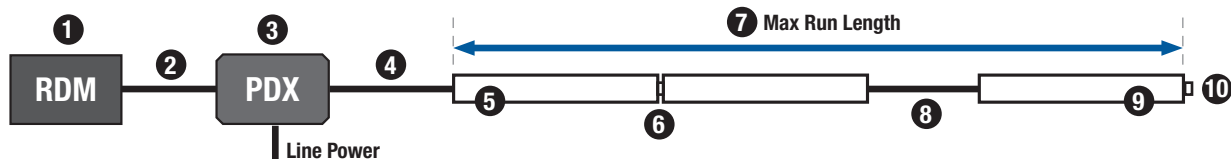
### CLWET - SINGLE SEGMENT CONFIGURATION EXAMPLE

Max Run Lengths	120V	240V	277V
15W luminaire	85'	169'	196'
8W luminaire	131'	262'	304'

May add up to 50 feet of Extension or Starter Cord to above.

#### Component Identification

- 1) RDM DMX Controller (see pg. 2)
- 2) DMX Data Cable **DXC-xx** or **CD-xx** (CSC only)
- 3) PDX Power Data Wiring Box
- 4) Starter Cord **SCxxCLW**
- 5) First luminaire begins Linear Run
- 6) Luminaires connect end to end
- 7) Distance from 1st to last luminaire in linear run
- 8) Extension Cord **ECxxCLW**  
(Can add up to 50' more Extension Cord to Max Run Length)
- 9) Last luminaire in the linear run
- 10) Terminator Cap **TCAPDCLW** (required at end of run)
- 11) Last luminaire showing Data Bridge Cable connection
- 12) Data Bridge Cable **DBxxCLW** to continue DMX Data only
- 13) PDX Box to connect Data Bridge Cable
- 14) Continuation of controlled luminaire run



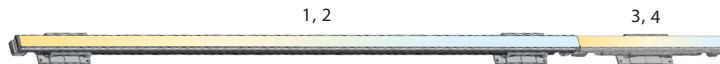
### PERSONALITY - SET AT FACTORY FOR SPECIFIC CAPABILITIES

Consult factory when ordering to establish requirements for personality assignment and other addressing or feature programming to suit application specifics.

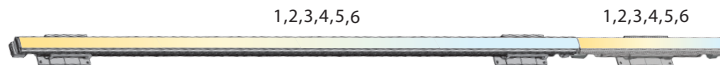
**Personality 1** 4 foot & 1 foot luminaires **configured 4 Channels per luminaire** (R,G,B,W)



**Personality 2** 4 foot & 1 foot luminaires **configured 2 channels per luminaire** (Color Tuning/Dynamic White) (No RGBW)



**Personality 3** 4 foot & 1 foot luminaires **configured 6 Channels per luminaire** to support **Digital Dual Mode 6-Channel DMX** (Channel 1-4 RGBW, 5-Brightness, 6-Tunable White CCT)



**Personality 4** 4 foot luminaire (only) **configured in 2 foot increments** (4 Channels/2ft - R,G,B,W)



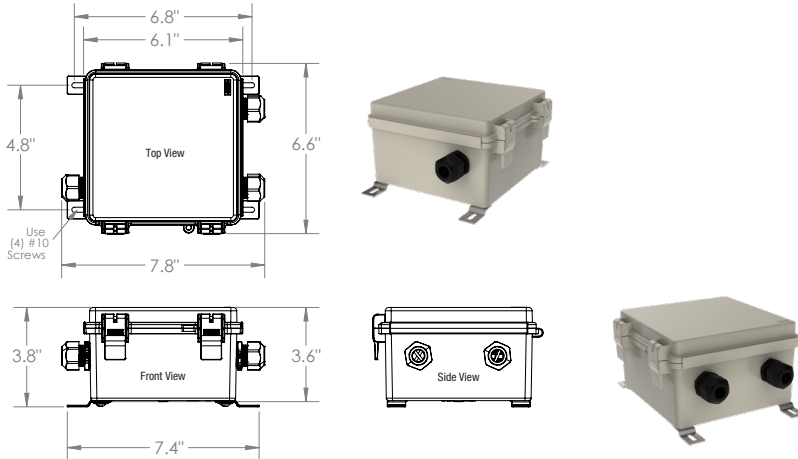
**Personality 5** 4 foot luminaire (only) **configured in 1 foot increments** (4 Channels/1ft - R,G,B,W)



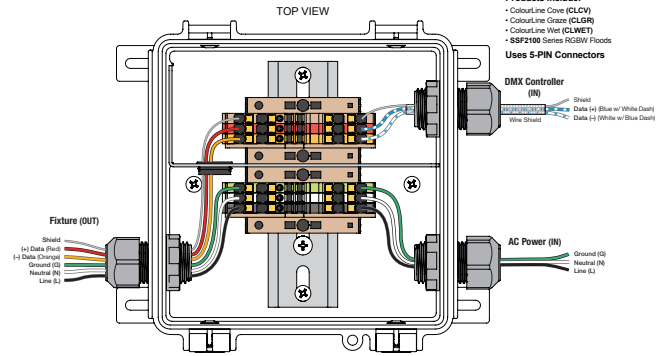


## PDX2 - POWER DATA WIRING BOX (ONE PDX2 REQUIRED PER RUN)

The PDX2 is an exterior-rated enclosure that consolidates multiple input sources into one output to the CLWET luminaires. Data input from the RDM Color controller and AC input combine to provide one output to a Starter Cord. One PDX2 box is required per each luminaire run.

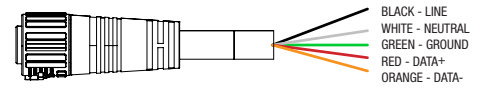


PDX2 Wiring for ColourLine Series



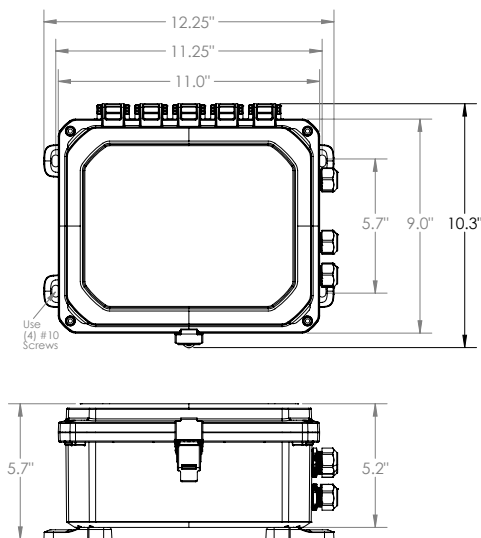
Products include:  
 • ColourLine Cove (CLCV)  
 • ColourLine Grate (CLGR)  
 • ColourLine Wet (CLWET)  
 • SSP2100 Series RGBW Floods

Starter Cable out to luminaire



## PDX-RDS2 - POWER DATA WIRING BOX - WITH 2-PORT SPLITTER

The PDX-RDS2 is an exterior-rated enclosure with a transparent, hinged cover that latches and seals using a formed in place PUR gasket and a stainless steel hinge pin. The PDX-RDS2 houses a DMX/RDM 2 port splitter/repeater that takes in one DMX input and provides two regenerated DMX outputs that can be any combination of starter cords or straight DMX outputs. The repeater allows you to daisy-chain PDX2 or PDX-RDS2 boxes by providing two maximum DMX run length outputs.



### Connector Identification

- 1) AC Input (Line power)
- 2) DMX Data Cable **DXC-xx** or **CD-xx** (CSC only)
- 3) Starter Cord **SCxxLZWET** one
- 4) Starter Cord **SCxxLZWET** two
- 5) Auxiliary Ground

