

Date:	Approved:
Type:	
Luminaire:	
Project:	

COVELINE XL



The **COVELINE XL** is a powerful, versatile cove luminaire delivering over 1000 lumens per foot. **COVELINE XL** comes in a 1 ft or 4 ft nominal lengths and 24K, 27K, 3K, 35K or 4K color temperatures. The housing is constructed of extruded aluminum with tooled end caps and is IP20 rated for interior use only. It's Chicago Code Compliant meeting the standards for application use in Chicago, IL. and features Plug N' Play connectors for easy installation. Flicker free dimmable to 3% full brightness with ELV reverse phase dimming.



SPECIFICATIONS

PHYSICAL

beam spread	60°, 120°
LEDs per foot	22 per foot
mounting	standard: surface mount bracket with (+/- 15° from center, optional: ADB2 full 180° rotation (+/- 90° from center)
housing	extruded aluminum housing with tooled end caps
lens	etched polycarbonate
ingress protection	damp and dry interior locations IP44 rated
luminaire connections	daisy chain with male and female, 3-PIN, plug-n-play connectors, Chicago Code Compliant (CCC)
weight	1 foot (1 lbs), 4 foot (4 lbs)

PERFORMANCE

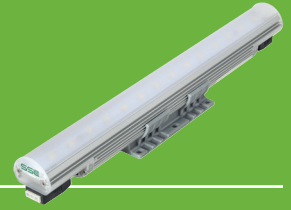
color temperature	2400K, 2700K, 3000K, 3500K, 4000K
lumen output [all on]	555 lm/ft, 1060 lm/ft, 1105 lm/ft, 1105 lm/ft, 1200 lm/ft
lumen maintenance	L70 ≥ 70,000 hours
operating temperature	-4°F to 104°F (-20°C to 40°C)
color consistency	2 SDCM / 84CRI
warranty	5 year limited warranty

ELECTRICAL

input voltage	Universal 120 - 277 VAC
power supply	integral Class II, electronic high-power factor 94% @ 120V
interface	dimmable to 3% full brightness, (ELV) electronic low-voltage reverse phase, synchronized w/ soft shut-off
certification	ETL /cETL Listed
standards	UL 1598, CSA C22.2 No. 250.0 - Class I, IES LM-79/LM-80
power consumption	1 ft @ full power (11W), 4 ft @ full power (44W)

Ordering Information

COVELINE XL



PART NUMBERS

CVLX					
MODEL	LENGTH	CCT	OPTICS	OPTIONS	
CVLX COVELINE XL	1 12 in. [305 mm]	24K 2400K	60 60° beam	CVLLMB-1	coveline louver (1ft)
	4 46.8 in. [1219 mm]	27K 2700K	120 120° beam	CVLLMB-4	coveline louver (4ft)
		3K 3000K		DVL-1	direct view lens (1ft)
		35K 3500K		DVL-4	direct view lens (4ft)
		4K 4000K		DVL-ENDCAP	direct view lens end cap (pair) <i>must have 1 pair for every DVL</i>

Accessories (Indicate the quantity needed for each item.)

REQUIRED: Starter Cable (SC6) and Terminator Cap (TCAP) for every run. **Maximum Run Length** = 60 feet (1-foot) @ 120VAC , 80 feet (4 foot) @ 120VAC

_____ SC6 6 ft. Starter Connection Cord

_____ TCAP Terminator Cap

_____ EC06 6 in. Extension Cord

_____ EC12 12 in. Extension Cord

_____ EC24 24 in. Extension Cord

_____ EC60 60 in. Extension Cord

Mounting Options (Indicate the quantity needed for each item.)

_____ ADB2 180° Adjustable Bracket

_____ CA2/6 Cantilever Arm - 6"

_____ CA2/12 Cantilever Arm - 12"

_____ CA2/18 Cantilever Arm - 18"

Use Module Only to Convert 0-10V Signal to ELV Dimming

DIMO-10VELV is a dimming module that converts a 0-10V dimming signal to an ELV (electronic low-voltage) reverse phase dimming signal for ELV dimmable lighting products.

Control Components (Indicate the quantity needed for each item.) (1 module per run) (Indoor rated)

REQUIRED: Starter Cable (SC6) and Terminator Cap (TCAP) for every run.

_____ DIMO-10VELV-UNV-OJBM-IJBM-BLA 0-10V ELV Dim Module, Output Junction Box Mount (12" lead wire), Input Junction Box Mount (12" lead wire), Interior Rated Enclosure, Black Anodized Alum.

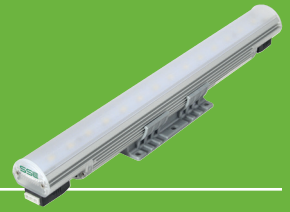
_____ DIMO-10VELV-UNV-OCPM-ICPM-BLA 0-10V ELV Dim Module, Output Conduit Pipe Mount (96" lead wire), Input Conduit Pipe Mount (96" lead wire), Interior Rated Enclosure, Black Anodized Alum.

REQUIRED: Extension Cord (ECXX) XX=06, 12, 24, or 60 Inch Lengths (Pick Length to use based on 1st luminaire to DIMO-10VELV unit distance) and Terminator Cap (TCAP) for every run.

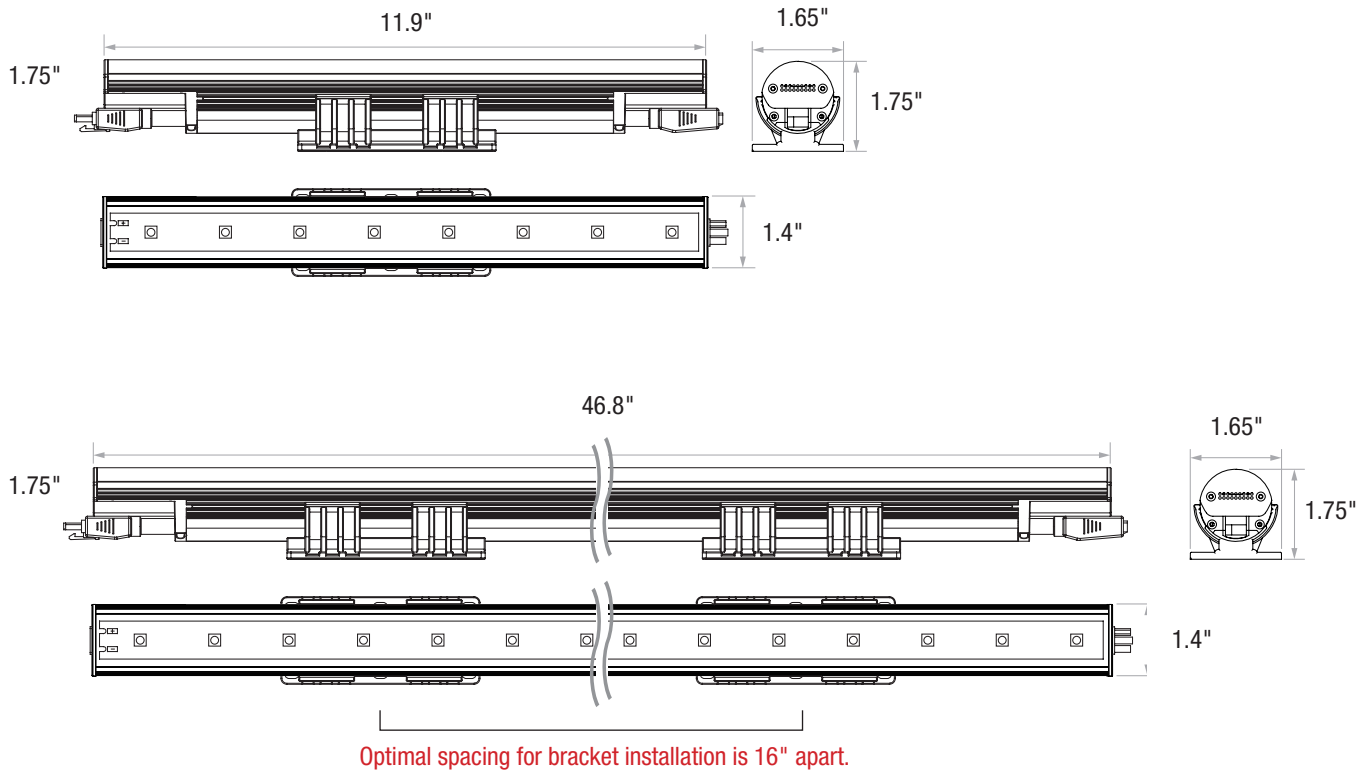
_____ DIMO-10VELV-UNV-OSCM-IJBM-BLA 0-10V ELV Dim Module, Output Starter Cord Mount (6" lead wire), Input Junction Box Mount (6" lead wire), Interior Rated Enclosure, Black Anodized Alum.

Dimensions

COVELINE XL



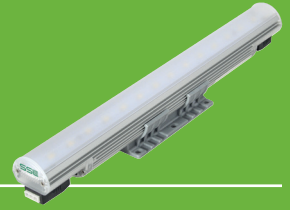
DIMENSIONS WITH STANDARD BRACKET



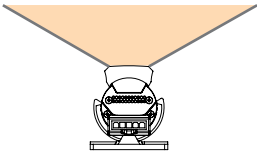
TO PREVENT VOIDING THE WARRANTY, DO NOT INSTALL BRACKETS WITHIN 2" OF THE ENDS OF LUMINAIRE.

Photometry

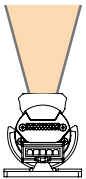
COVELINE XL



CVLX 1FT 4K 120°



CVLX 1FT 4K 60°

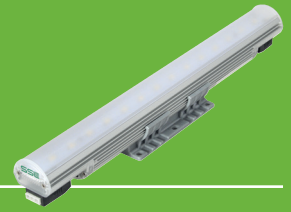


PERFORMANCE

Model	Delivered Lumens				
	2400K	2700K	3000K	3500K	4000K
CVLX-1	555	1060	1105	1150	1200
CVLX-4	2220	4240	4420	4600	4800

Mounting Options

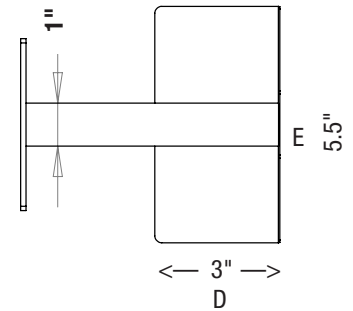
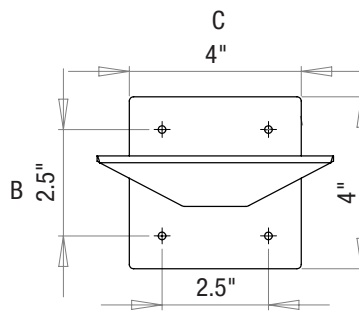
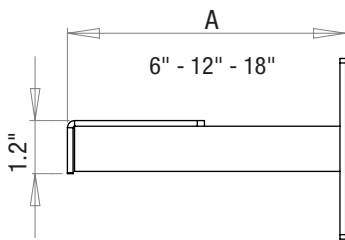
COVELINE XL



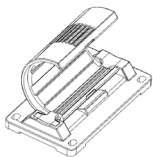
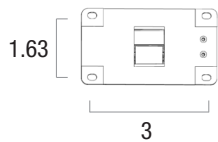
CANTILEVER ARM - Available in 3 Lengths

CA2	(A) arm length	mounting height (B)	mounting width (C)	bracket plate length (D)	bracket plate width (E)
CA2/6	6"	4"	4"	3"	5.5"
CA2/12	12"				
CA2/18	18"				

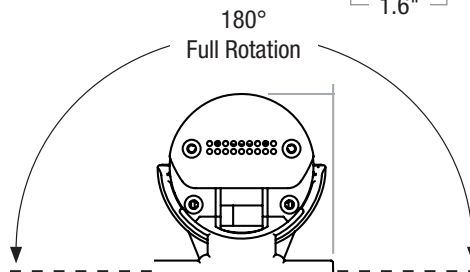
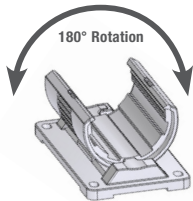
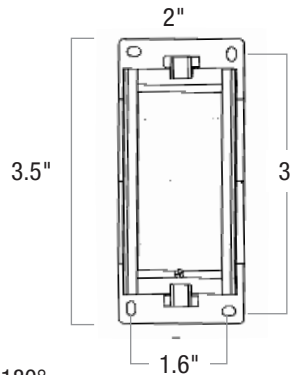
CVLX	CA2 Requirement
1'	1
4'	2



OPTIONAL ADJUSTABLE BRACKET (ADB2)

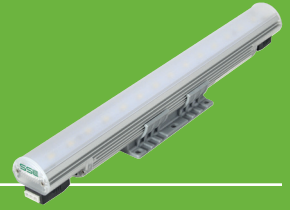


- Multi-Directional.**
- Adjusts +/-90°
 - Mounts to horizontal or vertical surfaces
 - Easy installation w/luminaire in position



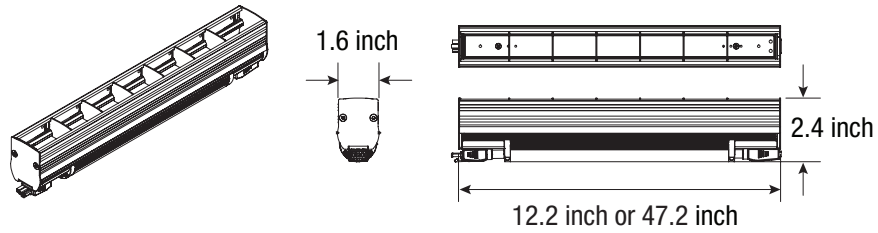
Accessories

COVELINE XL



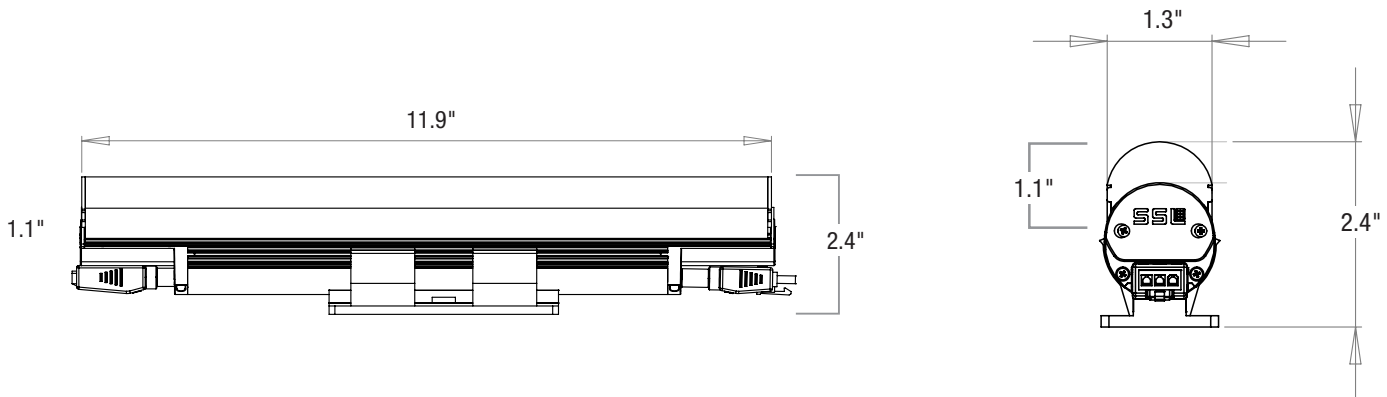
LOUVER (BLACK) - CVLLMB

	1FT	4FT
height	2.4"	2.4"
length	12.2"	47.2"
width	1.6"	1.6"



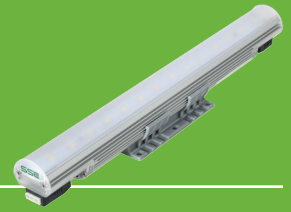
DIRECT DIFFUSER LENS - DVL

	1FT	4FT
total height	2.4"	2.4"
diffuser height	1.1"	1.1"
length	11.9"	46.8"
width	1.3"	1.3"

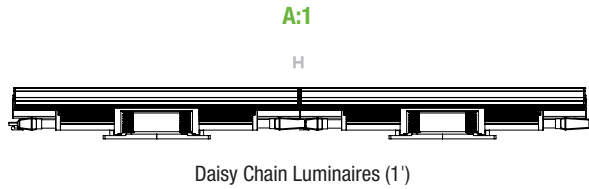


Connectivity Options

COVELINE XL



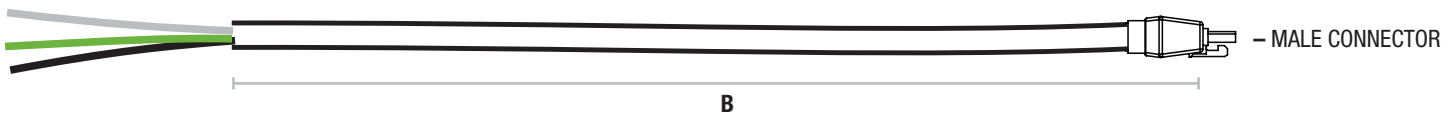
CONNECTIONS & CABLES



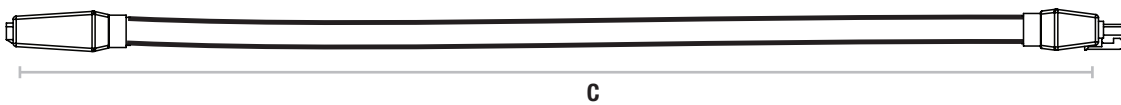
- A1:** MIN/.5" - MAX/.8" between luminaires
- A4:** MIN/0" - MAX/.6" between luminaires
- B:** **SC6** - 6ft Starter Cord
- C:** **EC6** 6 in. Extension Cord
- C:** **EC12** 12 in. Extension Cord
- C:** **EC24** 24 in. Extension Cord
- C:** **EC60** 60 in. Extension Cord
- D:** **TCAP** 1.13" Terminator Cap

B: STARTER CABLES

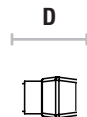
INSURE FIRST LUMINAIRE IS ORIENTED TO ACCEPT MALE CONNECTOR STARTER CABLE



C: EXTENSION CABLES

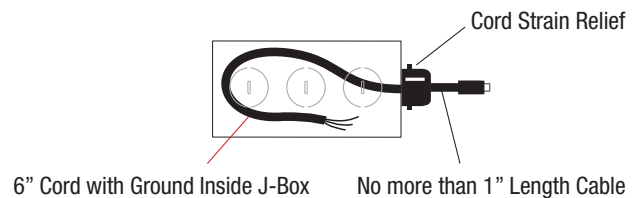


D: TERMINATOR CAP TCAP



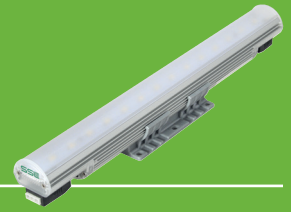
CVLX features Chicago Code Compliant (CCC) connectors. See below for Starter Connection Cord (SC6) setup details.

Steel Junction Box Wiring for Sarter Connection Cord (SC6)



Control Components

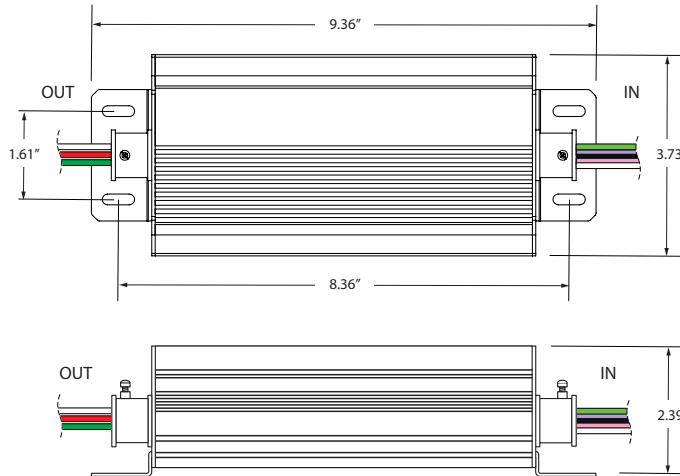
COVELINE XL



OVERALL DIMENSIONS (DIMO-10VELV)

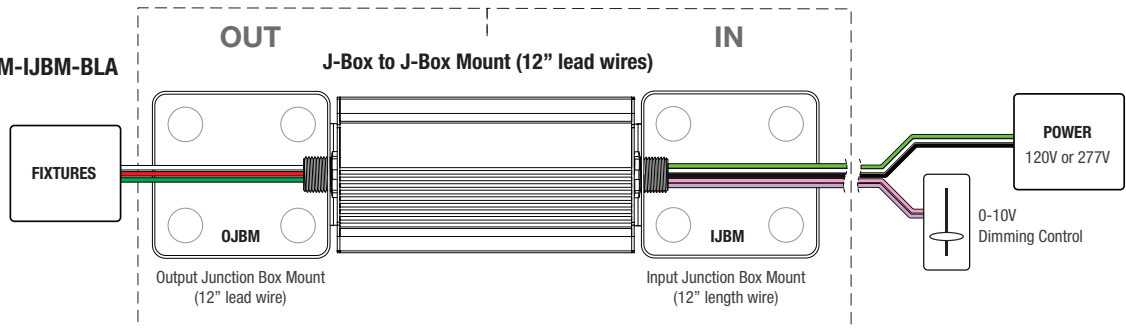
Use Module Only to Convert 0-10V Signal to ELV Dimming

Converts 0-10V signal for ELV Dimming protocol.

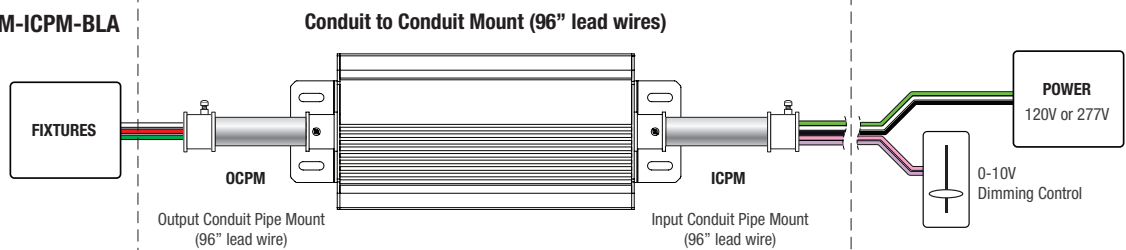


CONNECTIVITY TYPES (DIMO-10VELV)

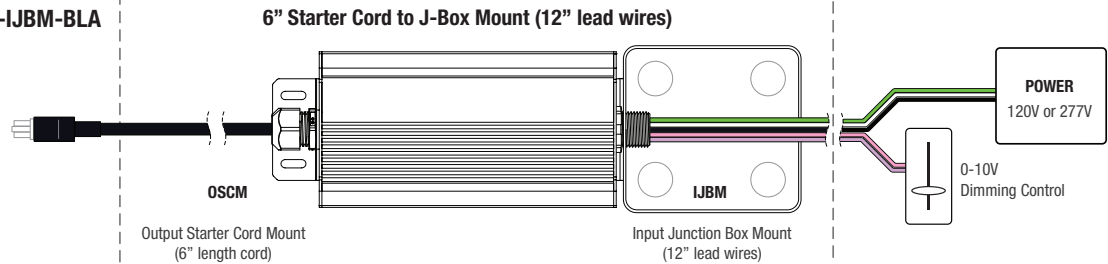
DIMO-10VELV-UNV-OJBM-IJBM-BLA



DIMO-10VELV-UNV-OCPM-ICPM-BLA




DIMO-10VELV-UNV-OSCM-IJBM-BLA



Due to continuous development and improvements, specifications are subject to change without notice. Product use certifies agreement to Solid State Luminaires terms and conditions.

© Solid State Luminaires

3609 Swenson Ave • St. Charles, IL • 60174 | solidstateluminaires.com | 800.900.1730

 US Commercial Lighting Manufacturer Since 1982

TG-DM-010325