

COVELINE XL TW - INSTALLATION and OPERATION INSTRUCTIONS

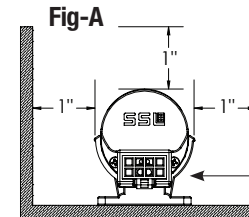
CAUTION: BEFORE CONNECTING THE FIXTURE TO A POWER SUPPLY, MAKE SURE THE POWER IS SWITCHED OFF.



corporate
 t (877) SSL-4733
 f (630) 889-8106
 3609 Swenson Ave.
 St. Charles, IL 60174

DETAILED ILLUSTRATION

IMPORTANT Allow proper spacing around luminaire to reduce heat and prolong LED life. Avoid total enclosure of Coveline fixture. Allow air circulation around fixture during operation.



Coveline must have at least 1 inch spacing on both sides and above.

Coveline must be .375 inches above the Mounting Surface

MAINTENANCE: Fixtures should be protected from paint and plaster work during construction. Excessive dirt accumulation can lead to overheating and shorten the expected life of the LEDs. Wipe the fixture with mild dish soap on a damp rag to remove excess dirt and maintain maximum light output. Do not use harsh cleaning chemicals as this can discolor the lens. Never use water under pressure.

GENERAL:

1. Before starting the installation, make sure all electricity has been turned off and electrical breaker has been locked out and tagged out.
2. To ensure the success of the installation, be sure to read these instructions and review the diagrams thoroughly before beginning.
3. All electrical connections must be in accordance with local codes, ordinances, or the National Electrical Code.

NOTE: The important safeguards and instructions appearing in this manual are not meant to cover all possible conditions and situations that may occur.

INSTALLATION:

IMPORTANT: Allow proper spacing around luminaire to reduce heat and prolong LED life. **Fig-A**

- 1) Remove mounting bracket(s) from fixture by hand.
- 2) Secure mounting bracket(s) to surface using screws. **Ensure brackets are aligned. Fig-1**
IMPORTANT: Installing brackets in a straight line ensures an even linear light pattern.
- 3) Attach fixture to the mounting brackets in the desired position. **Fig-2** Grooves on side of fixture clip into mounting bracket and ratchet to allow adjusting light direction. Repeat steps 1-3 for mounting multiple fixtures. Fixtures connect end-to-end. **Fig-3**

NOTE: Cable-Tie may be inserted thru bracket, around fixture, for inverted applications. **Fig-2**

NOTE: A Starter Cable and Terminator Cap are required for every fixture run. **Fig-3**

- 4) Use Extension Cable where necessary, for corners or extending fixture run. **Fig-4**

IMPORTANT: DO NOT exceed product's **Maximum Run Length:**
 Coveline XL TW - 60 ft (120V) and 80 ft (277V)

- 5) Use Extension Cable where necessary, for corners and extending fixture run. **Fig-4**
- 6) **FOR DIMMING:** Starter Cable (SC6TW) supports 2-Channel 0-10V Dimming, 1% (1-Channel for Power, 1-Channel for Color Temperature). **Fig-5**

NOTE: For Dimmer, check Watt limitation and current leakage restriction.

IMPORTANT: Connectors should be fully engaged when connecting fixtures. **Fig-6**

CAUTION: Before connecting the fixture(s) to power make sure power is off.

NOTE: DO NOT connect power until fixtures are properly mounted, connected and wired.

- 7) Once all fixtures are mounted, connected and wired correctly, turn power on at the breaker box. Then turn fixtures on with the dimmer controller.
- 9) If troubleshooting is necessary, turn power off again at breaker box—lock out and tag out.

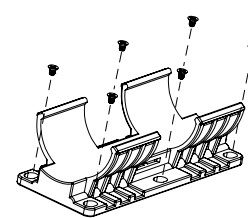


Fig-1

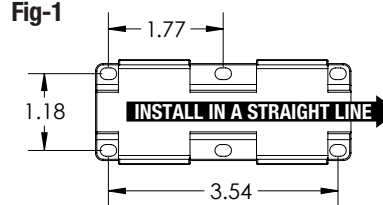
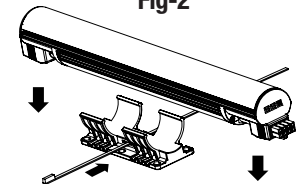


Fig-2



120-277V Universal Voltage

Starter Cable
SC6TW
Line Voltage

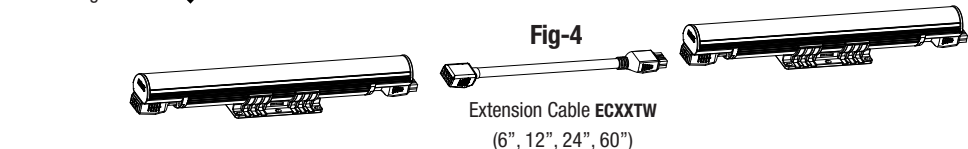
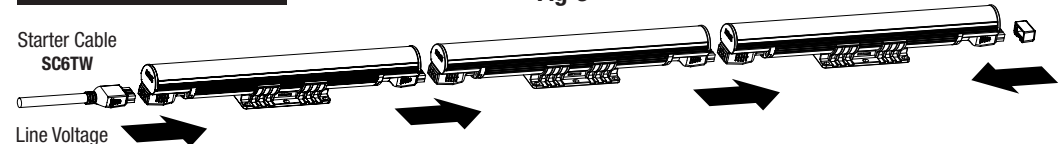


Fig-4

Extension Cable ECXXTW
(6", 12", 24", 60")

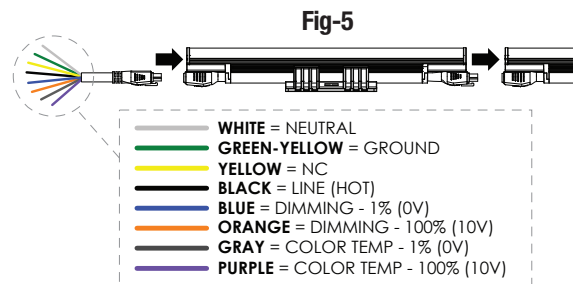
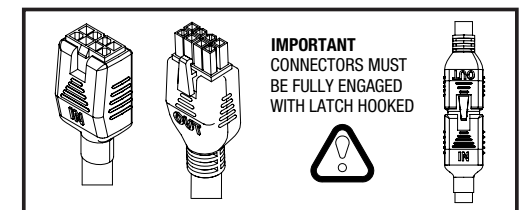


Fig-5

Fig-6



IMPORTANT
 CONNECTORS MUST
 BE FULLY ENGAGED
 WITH LATCH HOOKED

TG-JF-120621