

**Date:** \_\_\_\_\_

**Type:** \_\_\_\_\_

**Fixture:** \_\_\_\_\_

**Project:** \_\_\_\_\_

**Approved:**

## COVELINE XL WET



The **COVELINE XL WET** is a powerful and versatile interior / exterior cove luminaire. **COVELINE XL WET** comes in a 1 ft, 4 ft or 6 ft nominal lengths and 27K, 3K, 35K or 4K color temperatures. The housing is constructed of extruded aluminum with tooled end caps and is IP66 rated for interior & exterior use. Features IP68 line voltage Plug N' Play connectors for exterior linear runs. Power supply is integral, no remote driver required. Universal orientation fixture; up, down, horizontal or vertical positioning and 2 optical solutions. Flicker free dimmable to 3% full brightness with ELV trailing edge dimming.

### SPECIFICATION

color temperature	2700K	3000K	3500K	4000K
lumen output	896 per foot	966 per foot	966 per foot	1007 per foot
beam spread	30° x 80° - 120°			
LEDs per foot	22			
color consistency	3 SDCM / 84CRI			
lifetime	> 70,000 hours / L70 or better			
input voltage	Universal 120–277V AC			
power consumption	11W			
dimensions [ L x W x H ]	12.25" x 1.77" x 1.9"	47" x 1.77" x 1.9"	70.25" x 1.77" x 1.9"	
weight	1.3 lbs. per foot			
housing	extruded aluminum housing with tooled end caps			
lens	etched polycarbonate			
mounting	surface mounting with (+/- 15°), Adjustable Bracket (ADB2 +/-90° Bi-directional)			
operating temperature	-20°C to 40°C			
junction temperature	69°C @ T <sup>a</sup> 25°C			
interface	dimmable to 3% full brightness, (ELV) electronic low-voltage trailing edge, synchronized w/ soft shut-off			
power supply	integral Class II, electronic high-power factor 94%			
certification	ETL / cETL or CE			
environment	IP66 wet, exterior location (Connectors IP68)			
warranty	5 year limited warranty (refer to website for details)			

Due to continuous development and improvements, specifications are subject to change without notice. Solid State Luminaires reserves the right to change lab test details or specifications without notice. Product use certifies agreement to Solid State Luminaires terms and conditions.



# Ordering Information

**ORDERING INFORMATION**

CVLXWET		UNV									
MODEL	LENGTH	VOLTAGE	CCT	OPTICS	OPTIONS						
CVLXWET	COVELINE XL WET	<b>1</b>	305 mm [ 12 in. ]	<b>UNV</b>	120-277V	<b>27K</b>	2700K	<b>3080</b>	30° x 80° beam	<b>WC1L-1</b>	1' Louver (Black)
		<b>4</b>	1189 mm [ 46.8 in. ]		<b>3K</b>	3000K	<b>120</b>	120° x 120° beam	<b>WC1L-4</b>	4' Louver (Black)	
		<b>6</b>	1778 mm [ 70 in. ]		<b>35K</b>	3500K			<b>WC1L-6</b>	6' Louver (Black)	
				<b>4K</b>	4000K					<b>WC1HS-1</b>	1' Louver House Shield (Blk)
										<b>WC1HS-4</b>	4' Louver House Shield (Blk)
										<b>WC1HS-6</b>	6' Louver House Shield (Blk)

**Accessories** (Indicate the quantity needed for each item.) **REQUIRED:** Starter Cable (SC10W) and Terminator Cap (TCAPW) for every run. **Maximum Run Length = 60 feet**

- \_\_\_\_\_ **SC10W** 10 ft. Starter Connection Cord
- \_\_\_\_\_ **TCAPW** Terminator Cap
- \_\_\_\_\_ **ADBW2** 45° (+/-) Adjustable Bracket
- \_\_\_\_\_ **ADBW2-90** 90° (+/-) Adjustable Bracket
- \_\_\_\_\_ **EC12W** 12 in. Extension Cord
- \_\_\_\_\_ **EC24W** 24 in. Extension Cord
- \_\_\_\_\_ **EC60W** 60 in. Extension Cord
- \_\_\_\_\_ **CA2-6** 6" Cantilever Arm
- \_\_\_\_\_ **CA2-12** 12" Cantilever Arm
- \_\_\_\_\_ **CA2-18** 18" Cantilever Arm
- \_\_\_\_\_ **LS-6** Landscape Spike - 6"

### Use Module Only to Convert 0-10V Signal to ELV Dimming

DIMO-10VELV is a dimming module that converts a 0-10V dimming signal to an ELV (electronic low-voltage) reverse phase dimming signal for ELV dimmable lighting products.

**Control Components** (Indicate the quantity needed for each item.) (1 module per run) (Indoor rated)

- REQUIRED:** Starter Cable (SC6) and Terminator Cap (TCAP) for every run.
- \_\_\_\_\_ **DIMO-10VELV-UNV-OJBM-IJBM-BLA** 0-10V ELV Dim Module, Output Junction Box Mount (12" lead wire), Input Junction Box Mount (12" lead wire), Interior Rated Enclosure, Black Anodized Alum.
  - \_\_\_\_\_ **DIMO-10VELV-UNV-OCPM-ICPM-BLA** 0-10V ELV Dim Module, Output Conduit Pipe Mount (96" lead wire), Input Conduit Pipe Mount (96" lead wire), Interior Rated Enclosure, Black Anodized Alum.

Due to continuous development and improvements, specifications are subject to change without notice. Solid State Luminaires reserves the right to change lab test details or specifications without notice. Product use certifies agreement to Solid State Luminaires terms and conditions.



# Photometry

## PERFORMANCE

Model	Connected Wattage	Delivered Lumens			
		2700K	3000K	3500K	4000K
CVLXWET-1	11	896	966	966	1007
CVLXWET-4	44	3584	3864	3864	4028
CVLXWET-6	66	5376	5796	5796	6042

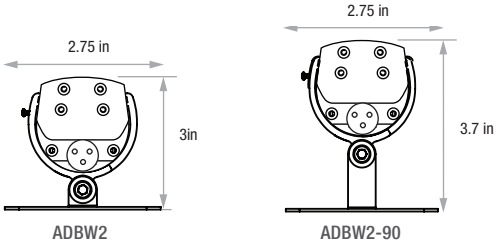
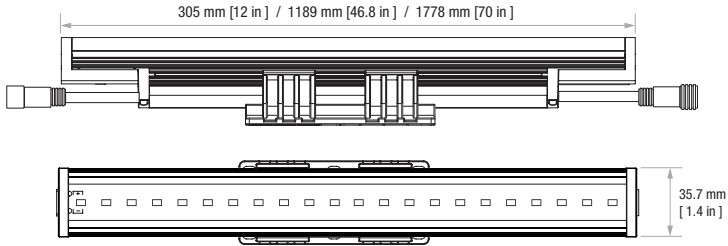
Due to continuous development and improvements, specifications are subject to change without notice. Solid State Luminaires reserves the right to change lab test details or specifications without notice. Product use certifies agreement to Solid State Luminaires terms and conditions.

# COVELINE XL

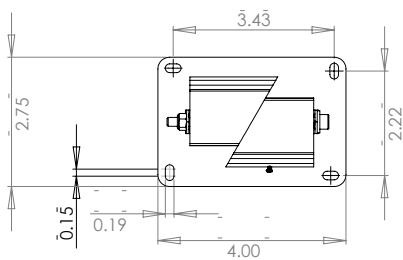
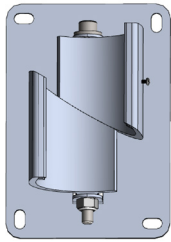


## Dimensions

Available in 3 lengths

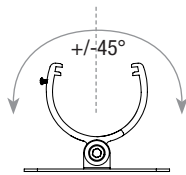
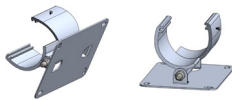


### ADJUSTABLE BRACKET (ADBW2)

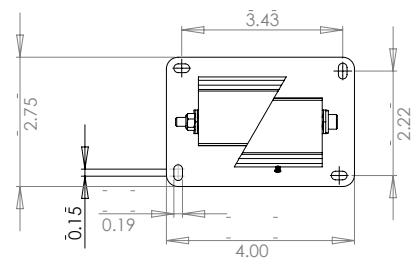
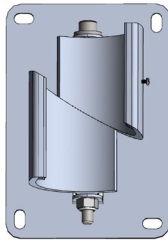


**Universal Orientation**

- Mounts to horizontal or vertical surfaces
- Easy installation w/fixture in position
- +/-45° to surface

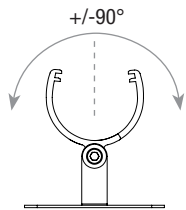
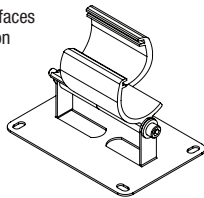


### 90° ADJUSTABLE BRACKET (ADBW2-90)



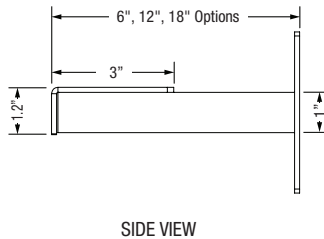
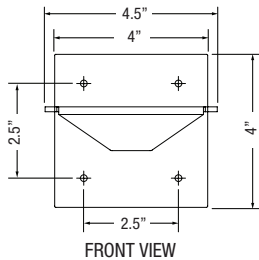
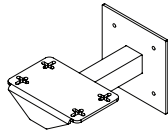
**Universal Orientation**

- Mounts to horizontal or vertical surfaces
- Easy installation w/fixture in position
- +/-90° to surface



### CANTILEVER ARM (CA2)

CA2	arm length	Fixture	CA2 Required
CA2-6	6"	1-foot	1
CA2-12	12"	4-foot	2
CA2-18	18"		



### Fixture Size Bracket Requirements

Model - Length	Number of Brackets Required
CVLXWET-1	1
CVLXWET-4	2
CVLXWET-6	3

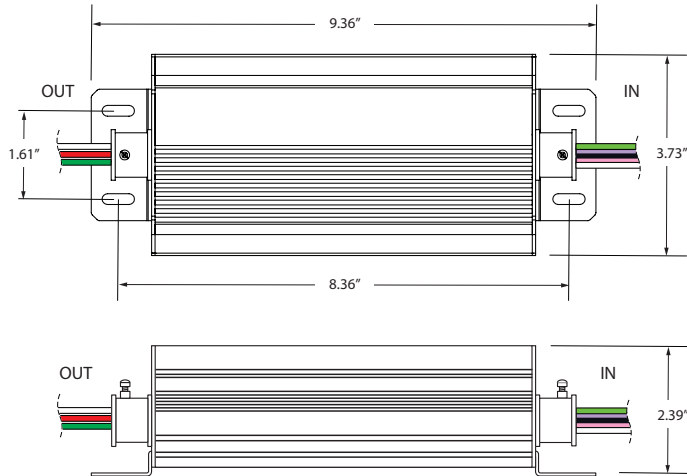
Due to continuous development and improvements, specifications are subject to change without notice. Solid State Luminaires reserves the right to change lab test details or specifications without notice. Product use certifies agreement to Solid State Luminaires terms and conditions.

# Control Components

## CONTROL OVERALL DIMENSIONS (DIMO-10VELV) ALL VERSIONS

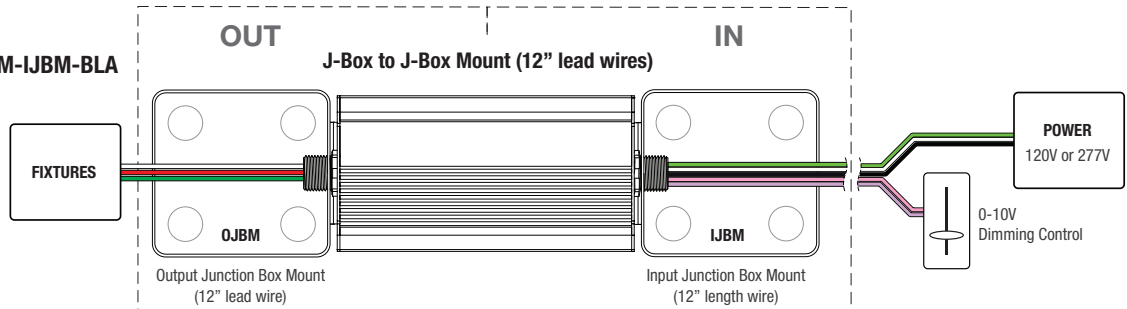
### Use Module Only to Convert 0-10V Signal to ELV Dimming

Converts 0-10V signal for ELV Dimming protocol.

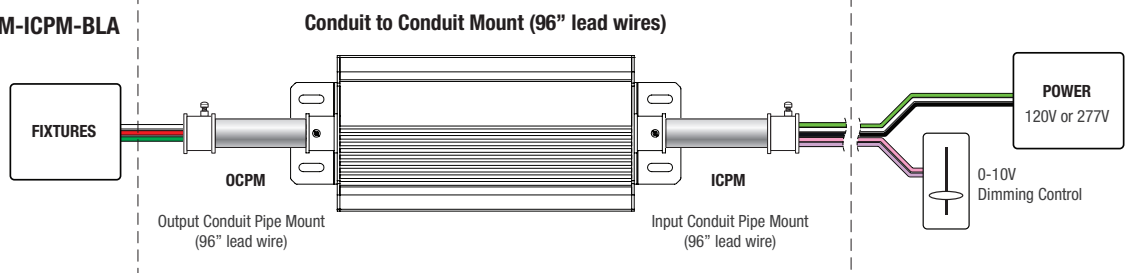


## CONTROL CONNECTIVITY (DIMO-10VELV) EACH VERSION

### DIMO-10VELV-UNV-OJBM-IJBM-BLA



### DIMO-10VELV-UNV-OCPM-ICPM-BLA



Due to continuous development and improvements, specifications are subject to change without notice. Solid State Luminaires reserves the right to change lab test details or specifications without notice. Product use certifies agreement to Solid State Luminaires terms and conditions.