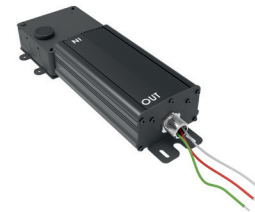


AWN to ELV DIMMING MODULE (DIM-AWN-ELV) — INSTALLATION INSTRUCTIONS
CAUTION: BEFORE CONNECTING THE LUMINAIRE TO A POWER SUPPLY, MAKE SURE THE POWER IS SWITCHED OFF.

CAUTION: BEFORE CONNECTING THE LUMINAIRE TO A POWER SUPPLY, MAKE SURE THE POWER IS SWITCHED OFF.

DETAILED ILLUSTRATION



www.solidstateluminaires.com
3609 Swenson Ave.
St. Charles, IL 60174

GENERAL:

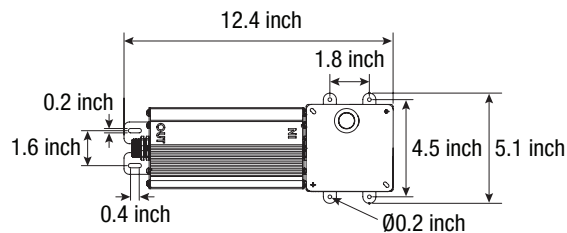
1. Before starting the installation, make sure all electricity has been turned off and electrical breaker has been locked out and tagged out.
2. To ensure the success of the installation, be sure to read these instructions and review the diagrams thoroughly before beginning.
3. All electrical connections must be in accordance with local codes, ordinances, or the National Electrical Code.
4. These luminaires are intended to be mounted to a Junction Box directly supported by the building structure.

IMPORTANT: The important safeguards and instructions appearing in this manual are not meant to cover all possible conditions and situations that may occur.

NOTE: The Dimming Module Converts an AWN Dimming signal to control ELV Dimmable Products.

INSTALLATION:

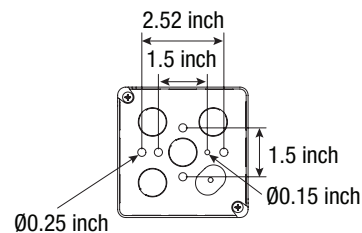
1. Depending upon the Module Connections being used, continue to the appropriate page to see installation details. The DIM-AWN-ELV Dimming Module ships assembled from the factory. Use the correlating diagrams on the following pages to complete electrical connections.



TOP VIEW



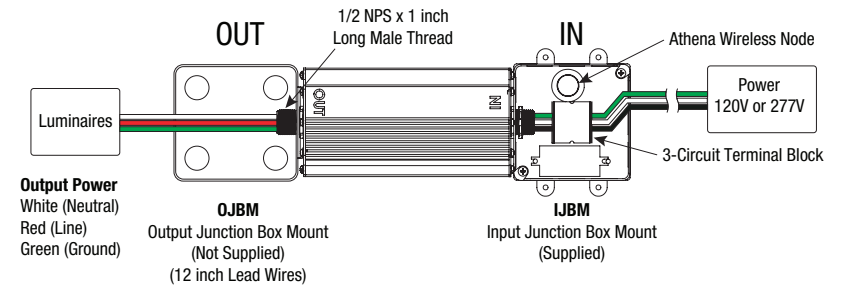
SIDE VIEW



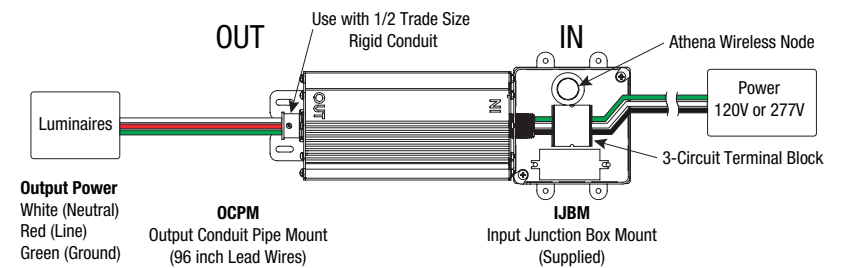
1/2 NPT Knockouts



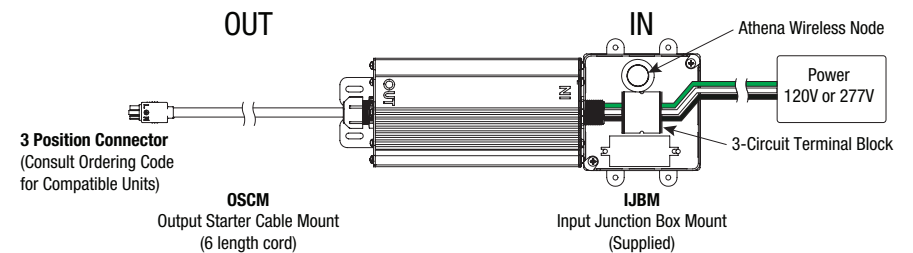
Junction Box to Junction Box Mount



Junction Box to Conduit Mount



Junction Box to Starter Cable Mount

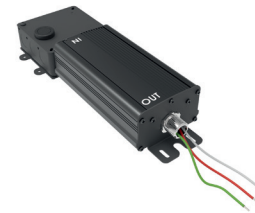


DIM-AWN-ELVii

TG-TD-060625

AWN to ELV DIMMING MODULE (DIM-AWN-ELV) — INSTALLATION INSTRUCTIONS

CAUTION: BEFORE CONNECTING THE LUMINAIRE TO A POWER SUPPLY, MAKE SURE THE POWER IS SWITCHED OFF.



DETAILED ILLUSTRATION

GENERAL:

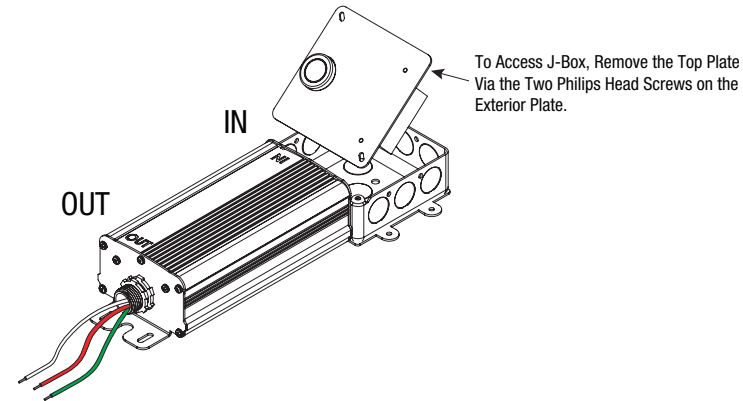
1. Before starting the installation, make sure all electricity has been turned off and electrical breaker has been locked out and tagged out.
2. To ensure the success of the installation, be sure to read these instructions and review the diagrams thoroughly before beginning.
3. All electrical connections must be in accordance with local codes, ordinances, or the National Electrical Code.
4. These luminaires are intended to be mounted to a Junction Box directly supported by the building structure.

IMPORTANT: The important safeguards and instructions appearing in this manual are not meant to cover all possible conditions and situations that may occur.

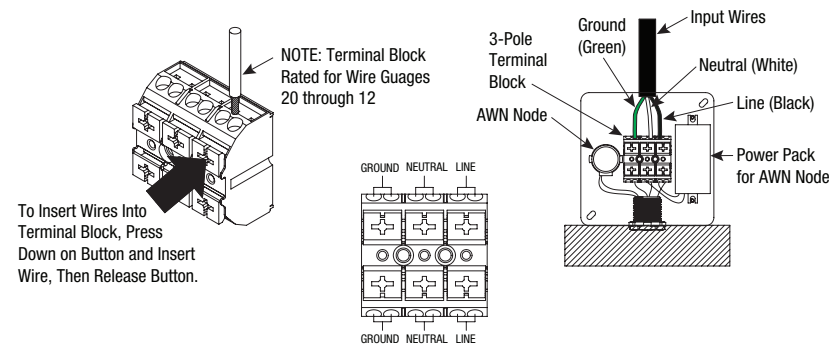
INSTALLATION:

1. Remove the cover plate on the IN side of the module to access the terminal block.
2. Use appropriate fasteners to secure the DIM-AWN-ELV Dimming Module to the electrical frame structure. The module can be secured through the junction box or the mounting arms.
3. Consult mounting breakdown on page 1 in regards to appropriate Junction Box or Conduit mounting instructions.
4. Consult mounting breakdown on page 1 in regards to appropriate Junction Box or Conduit mounting instructions.
5. Turn main power on and test luminaires.
6. If troubleshooting is required, turn power off, and repeat lock out and tag out.

Junction Box Cover Plate



Terminal Block



Maximum Run Length

Maximum luminaire run per unit is based on the power consumption of the luminaire used. **800W @ 120 VAC, 1800W @ 277 VAC**

Example: (800W @ 120 VAC) divided by (40W per luminaire) = 20 Luminaires