

## eCWLWET-250



**Date:** \_\_\_\_\_

**Type:** \_\_\_\_\_

**Fixture:** \_\_\_\_\_

**Project:** \_\_\_\_\_

**Approved:**

The **ECVLWET-250** is similar in use to the other Wet Cove series but with a lower lumen output for a lower placement above the ground, approximately 10-15 feet high. **ECVLWET-250** comes in a 1 ft, 4 ft or 6 ft nominal lengths and 27K, 3K, 35K or 4K color temperatures. The housing is constructed of extruded aluminum with tooled end caps and is IP66 rated for interior & exterior use. Features IP68 line voltage Plug N' Play connectors for exterior linear runs. Power supply is integral, no remote driver required. Universal orientation fixture; up, down, horizontal or vertical positioning with 120° optic beam pattern. Flicker free dimmable to 3% full brightness with ELV trailing edge dimming.

### SPECIFICATION

<b>color temperature</b>	2700K	3000K	3500K	4000K
<b>beam spread</b>	120°			
<b>lumen output</b>	225 per foot	250 per foot	263 per foot	275 per foot
<b>color consistency</b>	3 SDCM / 84CRI			
<b>lifetime</b>	> 70,000 hours / L70 or better			
<b>input voltage</b>	120V / 220V / 277V			
<b>power consumption</b>	3.5 W			
<b>dimensions [ L x W x H ]</b>	12.25" x 1.77" x 1.9"	47" x 1.77" x 1.9"	70.25" x 1.77" x 1.9"	
<b>weight</b>	1 lbs. per foot			
<b>housing</b>	extruded aluminum housing with tooled end caps			
<b>lens</b>	etched polycarbonate			
<b>mounting</b>	surface mounting with (+/- 15°) adjustable brackets, ADBW2 (+/- 45°), ADBW2-90 (+/- 90°) and CA2 cantilever arm			
<b>operating temperature</b>	-10°C to 40°C			
<b>junction temperature</b>	68°C @ T <sup>a</sup> 25°C			
<b>interface</b>	dimmable to 3% full brightness, electronic low-voltage trailing edge			
<b>power supply</b>	integral			
<b>certification</b>	ETL / cETL or CE			
<b>standards</b>	UL-Class I / IES LM-79 / LM-80			
<b>environment</b>	wet, exterior location / IP66 (Connectors IP68)			
<b>warranty</b>	5 year limited warranty (refer to website for details)			

Due to continuous development and improvements, specifications are subject to change without notice. Solid State Luminaires reserves the right to change lab test details or specifications without notice. Product use certifies agreement to Solid State Luminaires terms and conditions.



# Ordering Information

## ORDERING INFORMATION

ECVLWET-250							
MODEL	LENGTH	VOLTAGE		CCT	OPTICS	OPTIONS	
ECVLWET-250 eCOVELINE WET 250	1 311 mm [ 12.25 in. ]	120V	120 Volts	27K	2700K	120 120° x 120° beam	WC1L-1 1' Louver (Black)
	4 1194 mm [ 47 in. ]	220V	220 Volts	3K	3000K		WC1L-4 4' Louver (Black)
	6 1784 mm [ 70.25 in. ]	277V	277 Volts	35K	3500K		WC1L-6 6' Louver (Black)
				4K	4000K		WC1HS-1 1' Louver House Shield (Blk)
							WC1HS-4 4' Louver House Shield (Blk)
							WC1HS-6 6' Louver House Shield (Blk)

**Accessories** (Indicate the quantity needed for each item.) **REQUIRED:** Starter Cable (SC10W) and Terminator Cap (TCAPW) for every run. **Maximum Run Length = 100 feet**

_____ <b>SC10W</b> 10 ft. Starter Connection Cord	_____ <b>EC12W</b> 12 in. Extension Cord	_____ <b>CA2-6</b> 6" Cantilever Arm	_____ <b>LS-6</b> Landscape Spike - 6"
_____ <b>TCAPW</b> Terminator Cap	_____ <b>EC24W</b> 24 in. Extension Cord	_____ <b>CA2-12</b> 12" Cantilever Arm	
_____ <b>ADBW2</b> 45° (+/-) Adjustable Bracket	_____ <b>EC60W</b> 60 in. Extension Cord	_____ <b>CA2-18</b> 18" Cantilever Arm	
_____ <b>ADBW2-90</b> 90° (+/-) Adjustable Bracket			

## Use Module Only to Convert 0-10V Signal to ELV Dimming

DIMO-10VELV is a dimming module that converts a 0-10V dimming signal to an ELV (electronic low-voltage) reverse phase dimming signal for ELV dimmable lighting products.

**Control Components** (Indicate the quantity needed for each item.) (1 module per run) (Indoor rated)

**REQUIRED:** Starter Cable (SC6) and Terminator Cap (TCAP) for every run.

_____ <b>DIMO-10VELV-UNV-OJBM-IJBM-BLA</b> 0-10V ELV Dim Module, Output Junction Box Mount (12" lead wire), Input Junction Box Mount (12" lead wire), Interior Rated Enclosure, Black Anodized Alum.
_____ <b>DIMO-10VELV-UNV-OCPPM-ICPPM-BLA</b> 0-10V ELV Dim Module, Output Conduit Pipe Mount (96" lead wire), Input Conduit Pipe Mount (96" lead wire), Interior Rated Enclosure, Black Anodized Alum.

Due to continuous development and improvements, specifications are subject to change without notice. Solid State Luminaires reserves the right to change lab test details or specifications without notice. Product use certifies agreement to Solid State Luminaires terms and conditions.

# eCWLWET-250



## Dimensions

### PERFORMANCE

Model	Connected Wattage	Delivered Lumens			
		2700K	3000K	3500K	4000K
ECVLWET-250-1	3.5	225	250	263	275
ECVLWET-250-4	14	900	1000	1052	1100
ECVLWET-250-6	21	1350	1500	1578	1650

### FIXTURE SIZE BRACKET REQUIREMENTS

Model - Length	Number of Brackets Required
ECVLWET-250-1	1
ECVLWET-250-4	2
ECVLWET-250-6	3

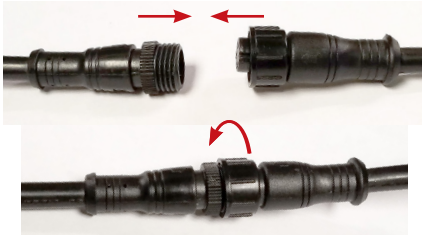
### WET COVE CONNECTORS



SC6W & SC10W - Starter Cord Connector (Female Connector w/ Inner Threads)



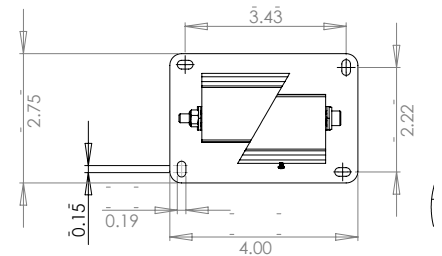
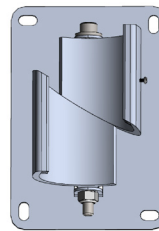
Line-In Connector on Wet Cove (Male Connector w/ Outer Threads)



Push 3-point connectors together to begin the connection process.

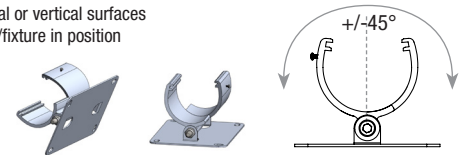
Rotate threaded coupling until snug to ensure a firm, sealed connection.

### ADJUSTABLE BRACKET (ADBW2)

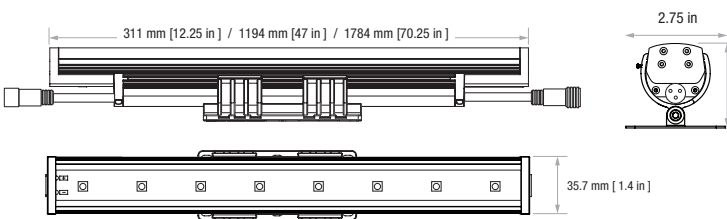


#### Universal Orientation

- Mounts to horizontal or vertical surfaces
- Easy installation w/fixture in position
- +/-45° to surface

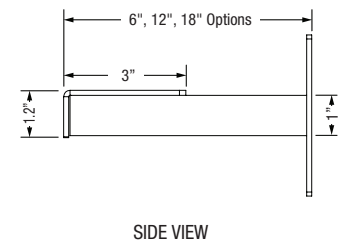
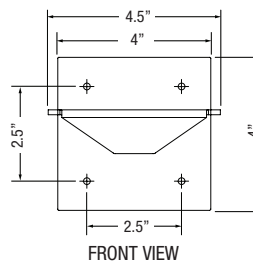
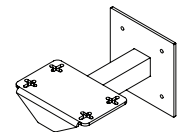


### DIMENSIONS Available in 4 lengths



### CANTILEVER ARM (CA2)

CA2	arm length	Fixture	CA2 Required
CA2-6	6"	1-foot	1
CA2-12	12"	4-foot	2
CA2-18	18"		



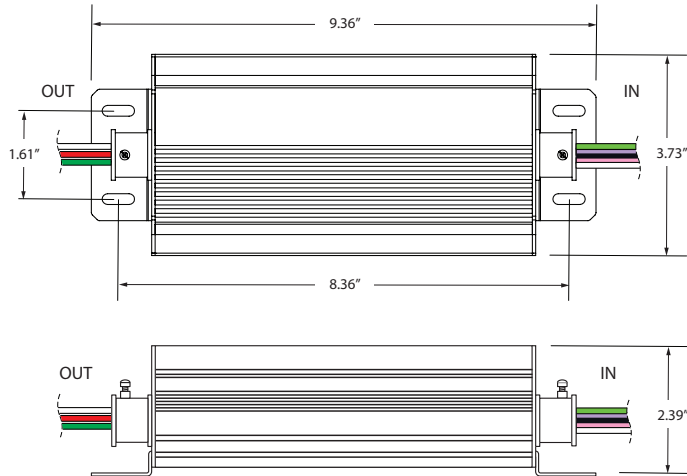
Due to continuous development and improvements, specifications are subject to change without notice. Solid State Luminaires reserves the right to change lab test details or specifications without notice. Product use certifies agreement to Solid State Luminaires terms and conditions.

# Control Components

## CONTROL OVERALL DIMENSIONS (DIMO-10VELV) ALL VERSIONS

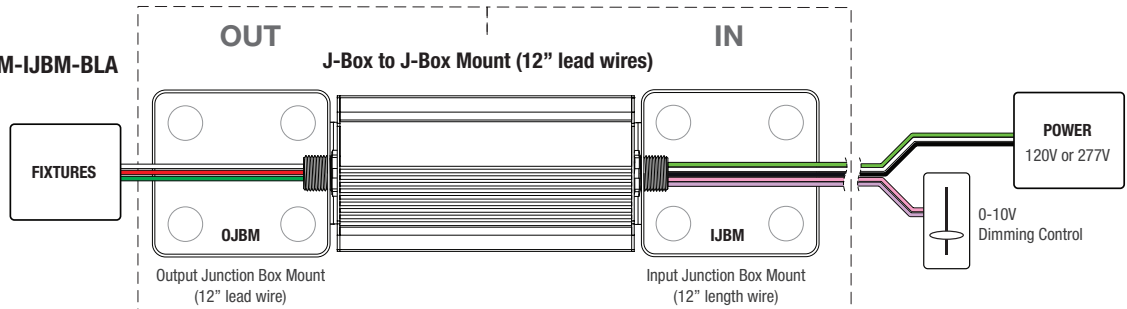
### Use Module Only to Convert 0-10V Signal to ELV Dimming

Converts 0-10V signal for ELV Dimming protocol.

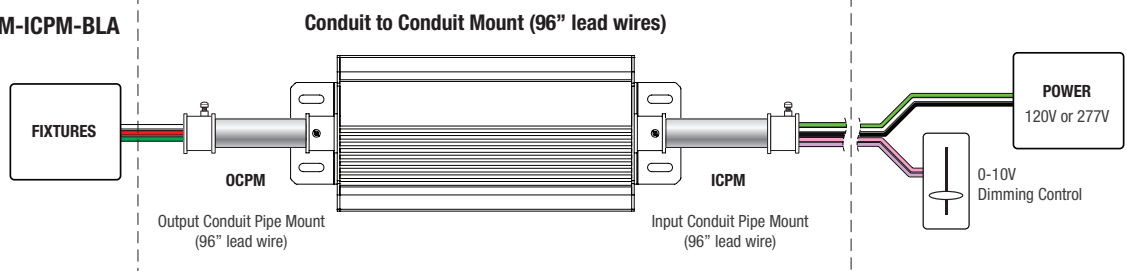


## CONTROL CONNECTIVITY (DIMO-10VELV) EACH VERSION

### DIMO-10VELV-UNV-OJBM-IJBM-BLA



### DIMO-10VELV-UNV-OCPM-ICPM-BLA



Due to continuous development and improvements, specifications are subject to change without notice. Solid State Luminaires reserves the right to change lab test details or specifications without notice. Product use certifies agreement to Solid State Luminaires terms and conditions.