

<b>Date:</b>	<b>Approved:</b>
<b>Type:</b>	
<b>Fixture:</b>	
<b>Project:</b>	

## eCOVELINE XL WET



The **eCOVELINE XL WET** is a powerful and versatile interior / exterior cove luminaire. **eCOVELINE XL WET** comes in a 1 ft, 4 ft or 6 ft nominal lengths and 24K, 27K, 3K, 35K or 4K color temperatures. The housing is constructed of extruded aluminum with tooled end caps and is IP66 rated for interior & exterior use. Features IP68 line voltage Plug N' Play connectors for exterior linear runs. Power supply is integral, no remote driver required. Universal orientation fixture; up, down, horizontal or vertical positioning and 2 optical solutions. Flicker free dimmable to 3% full brightness ELV trailing edge dimming.

### SPECIFICATION

<b>color temperature</b>	2400K (consult factory)	2700K	3000K	3500K	4000K
<b>lumen output</b>		510 per foot	706 per foot	745 per foot	785 per foot
<b>beam spread</b>	30° x 80° - 120°				
<b>LEDs per foot</b>	14				
<b>color consistency</b>	3 SDCM / 84CRI				
<b>lifetime</b>	> 70,000 hours / L70 or better				
<b>input voltage</b>	Universal 120–277V AC (50-60Hz)				
<b>power consumption</b>	6.5W per foot				
<b>dimensions [ L x W x H ]</b>	12.25" x 1.77" x 1.9"	47" x 1.77" x 1.9"	70.25" x 1.77" x 1.9"		
<b>weight</b>	1.3 lbs. per foot				
<b>housing</b>	extruded aluminum housing with tooled end caps				
<b>lens</b>	etched polycarbonate				
<b>mounting</b>	surface mounting with adj. (+/- 15°), Adjustable Bracket (30°–60° bi-directional)				
<b>operating temperature</b>	-20°C to 40°C				
<b>junction temperature</b>	66°C @ T <sub>a</sub> 25°C				
<b>interface</b>	dimmable to 3% full brightness, (ELV) electronic low-voltage trailing edge, synchronized w/ soft shut-off				
<b>power supply</b>	integral Class II, electronic high-power factor >94%				
<b>certification</b>	ETL / cETL or CE				
<b>standards</b>	UL-Class I / IES LM-79 / LM-80				
<b>environment</b>	wet, exterior location / IP66 (Connectors IP68)				
<b>warranty</b>	5 year limited warranty (refer to website for details)				

Due to continuous development and improvements, specifications are subject to change without notice. Solid State Luminaires reserves the right to change lab test details or specifications without notice. Product use certifies agreement to Solid State Luminaires terms and conditions.



## Ordering Information

### ORDERING INFORMATION

ECVLXWET			UNV							
MODEL	LENGTH	VOLTAGE	TEMPERATURE	OPTICS	OPTIONS					
ECVLXWET eCOVELINE XL WET	1 305 mm [ 12 in. ]	UNV 120-277V	27K 2700K	3080 30°x80° beam	WC1L-1 1' Louver (Black)					
	4 1189 mm [ 46.8 in. ]		3K 3000K			120 120°x120° beam	WC1L-4 4' Louver (Black)			
	6 1778 mm [ 70 in. ]		35K 3500K				WC1L-6 6' Louver (Black)			
			4K 4000K		WC1HS-1 1' Louver House Shield (Blk)					
					WC1HS-4 4' Louver House Shield (Blk)					
					WC1HS-6 6' Louver House Shield (Blk)					

**Accessories** (Indicate the quantity needed for each item.) **REQUIRED:** Starter Cable (SC10W) and Terminator Cap (TCAPW) for every run. **Maximum Run Length = 100 feet**

_____ <b>SC10W</b> 10 ft. Starter Connection Cord	_____ <b>EC12W</b> 12 in. Extension Cord	_____ <b>CA2-6</b> 6" Cantilever Arm	_____ <b>LS-6</b> Landscape Spike - 6"
_____ <b>TCAPW</b> Terminator Cap	_____ <b>EC24W</b> 24 in. Extension Cord	_____ <b>CA2-12</b> 12" Cantilever Arm	
_____ <b>ADBW2</b> 45° (+/-) Adjustable Bracket	_____ <b>EC60W</b> 60 in. Extension Cord	_____ <b>CA2-18</b> 18" Cantilever Arm	
_____ <b>ADBW2-90</b> 90° (+/-) Adjustable Bracket			

### Use Module Only to Convert 0-10V Signal to ELV Dimming

DIM0-10VELV is a dimming module that converts a 0-10V dimming signal to an ELV (electronic low-voltage) reverse phase dimming signal for ELV dimmable lighting products.

**Control Components** (Indicate the quantity needed for each item.) (1 module per run) (Indoor rated)

**REQUIRED:** Starter Cable (SC6) and Terminator Cap (TCAP) for every run.

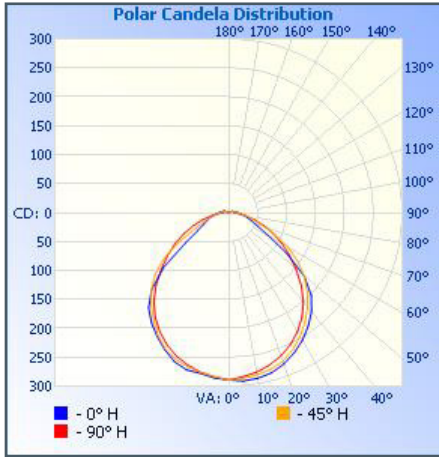
_____ <b>DIM0-10VELV-UNV-OJBM-IJBM-BLA</b> 0-10V ELV Dim Module, Output Junction Box Mount (12" lead wire), Input Junction Box Mount (12" lead wire), Interior Rated Enclosure, Black Anodized Alum.
_____ <b>DIM0-10VELV-UNV-OCPM-ICPM-BLA</b> 0-10V ELV Dim Module, Output Conduit Pipe Mount (96" lead wire), Input Conduit Pipe Mount (96" lead wire), Interior Rated Enclosure, Black Anodized Alum.

Due to continuous development and improvements, specifications are subject to change without notice. Solid State Luminaires reserves the right to change lab test details or specifications without notice. Product use certifies agreement to Solid State Luminaires terms and conditions.



## Photometry

### ECVLXWET-1-120-4K-785-120°

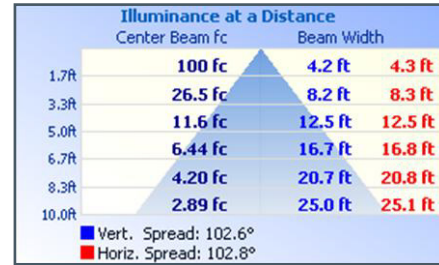


#### Zonal Lumen Summary

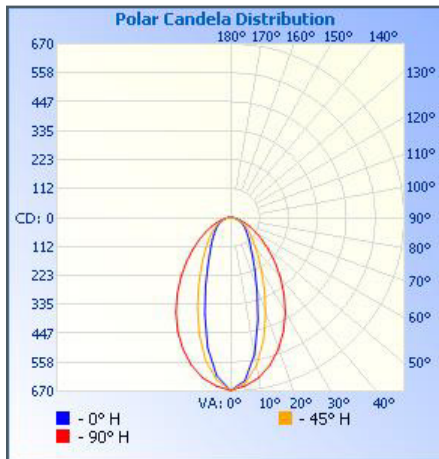
Zone	Lumens	% Luminaire
0-30	224.8	28.6%
0-40	367.4	46.8%
0-60	626.8	79.8%
60-90	135.7	17.3%
70-100	75.3	9.6%
90-120	22.4	2.9%
0-90	762.6	97.1%
90-180	22.4	2.9%
0-180	785.0	100%

Efficiency Total: 99%

#### Illuminance at a Distance



### ECVLXWET-1-120-4K-785-30°x 80°



#### Zonal Lumen Summary

Zone	Lumens	% Luminaire
0-30	342.3	43.7%
0-40	477.6	61%
0-60	673.2	86%
60-90	104.8	13.4%
70-100	50.7	6.5%
90-120	5.1	.6%
0-90	778.0	99.4%
90-180	5.1	.6%
0-180	783.0	100%

Efficiency Total: 99%

#### Illuminance at a Distance



### PERFORMANCE

Model	Connected		Delivered Lumens			
	Wattage	2700K	3000K	3500K	4000K	
ECVLXWET-1	6.5W	510	706	745	785	
ECVLXWET-4	26W	2040	2824	2980	3140	
ECVLXWET-6	39W	3060	4236	4470	4710	

### DIMMING

Model	Description
DELV	Lutron Diva Dimmer 300P
SELV	Lutron Skylark Dimmer 153P
SCL	Lutron Skylark Dimmer 300P

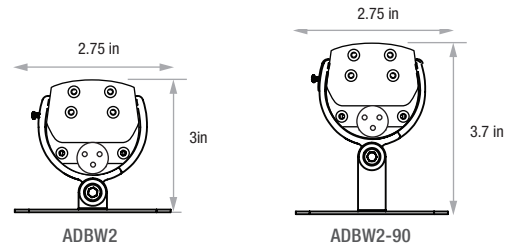
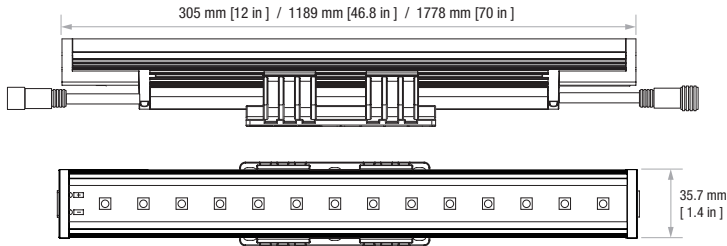


Due to continuous development and improvements, specifications are subject to change without notice. Solid State Luminaires reserves the right to change lab test details or specifications without notice. Product use certifies agreement to Solid State Luminaires terms and conditions.

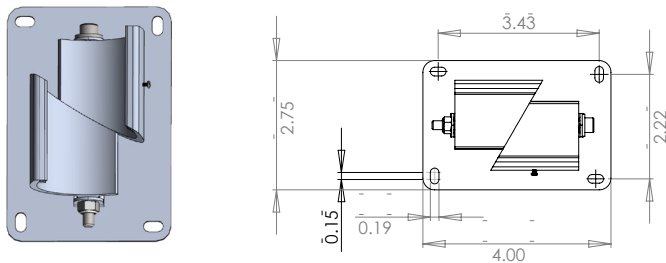


## Dimensions

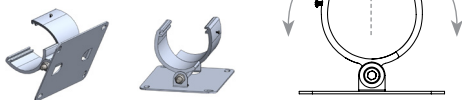
Available in 3 lengths



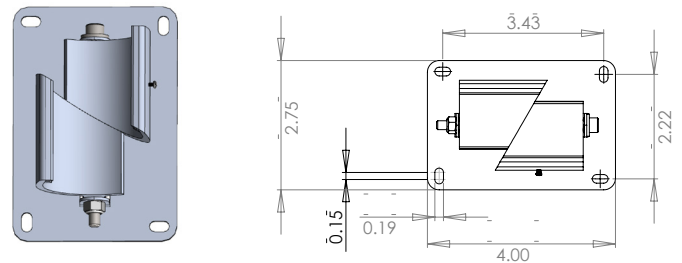
### ADJUSTABLE BRACKET (ADBW2)



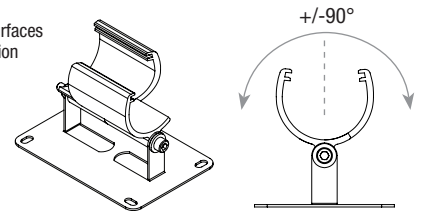
**Universal Orientation**  
 - Mounts to horizontal or vertical surfaces  
 - Easy installation w/fixture in position  
 - +/-45° to surface



### 90° ADJUSTABLE BRACKET (ADBW2-90)

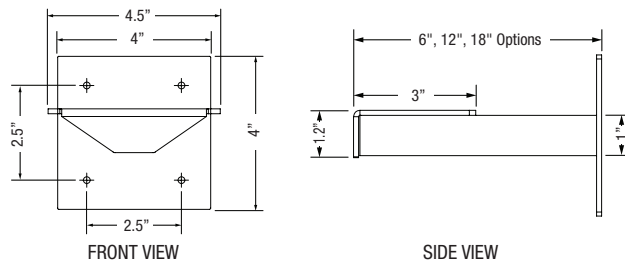
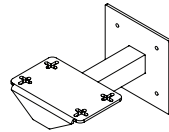


**Universal Orientation**  
 - Mounts to horizontal or vertical surfaces  
 - Easy installation w/fixture in position  
 - +/-90° to surface



### CANTILEVER ARM (CA2)

CA2	arm length	Fixture	CA2 Required
CA2-6	6"	1-foot	1
CA2-12	12"	4-foot	2
CA2-18	18"		



### Fixture Size Bracket Requirements

Model - Length	Number of Brackets Required
ECVLXWET - 1	1
ECVLXWET - 4	2
ECVLXWET - 6	3

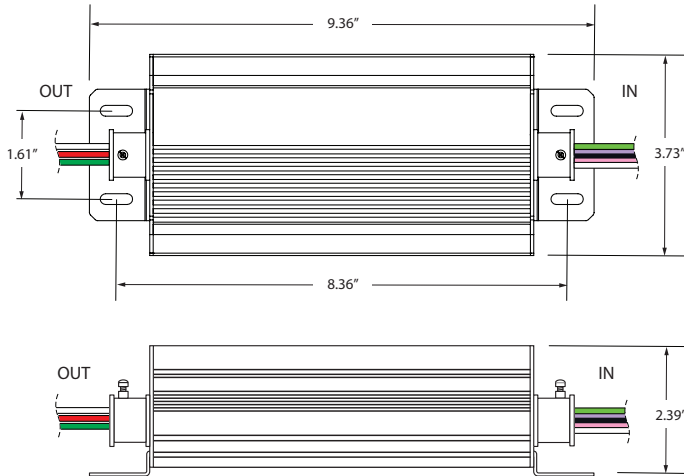
Due to continuous development and improvements, specifications are subject to change without notice. Solid State Luminaires reserves the right to change lab test details or specifications without notice. Product use certifies agreement to Solid State Luminaires terms and conditions.

# Control Components

## CONTROL OVERALL DIMENSIONS (DIMO-10VELV) ALL VERSIONS

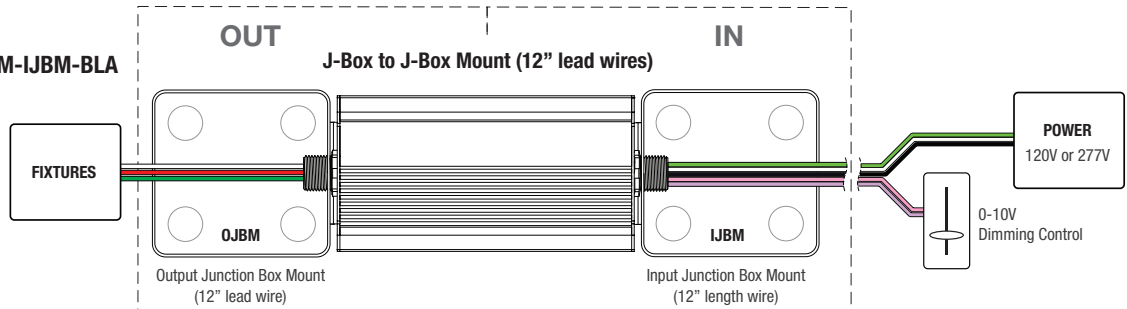
### Use Module Only to Convert 0-10V Signal to ELV Dimming

Converts 0-10V signal for ELV Dimming protocol.

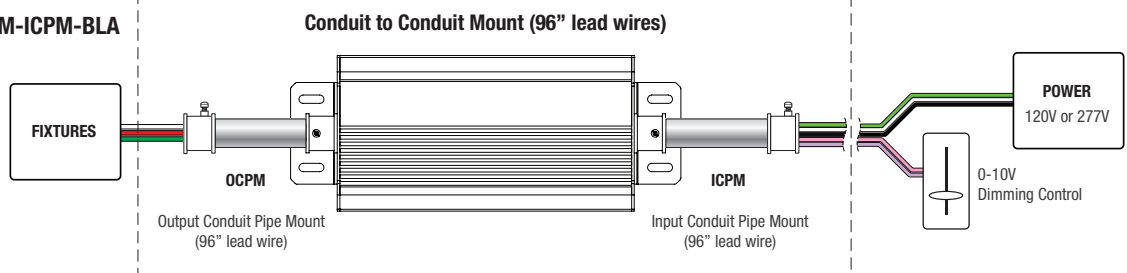


## CONTROL CONNECTIVITY (DIMO-10VELV) EACH VERSION

### DIMO-10VELV-UNV-OJBM-IJBM-BLA



### DIMO-10VELV-UNV-OCPM-ICPM-BLA



Due to continuous development and improvements, specifications are subject to change without notice. Solid State Luminaires reserves the right to change lab test details or specifications without notice. Product use certifies agreement to Solid State Luminaires terms and conditions.