



Date:	Approved:
Type:	
Luminaire:	
Project:	

MINI COVELINE 2



The **MINI COVELINE 2** is a very slim profile luminaire, less than 1 inch tall, that's perfect for tight spaces that require a maximum range of light output. **MINI COVELINE 2** is available in 1 or 4 foot lengths with 27K, 3K, 35K or 4K color temperatures in 93 CRI standard. The housing is constructed of extruded aluminum with tooled end caps and is rated for dry and damp locations. It's Chicago Code Compliant meeting the standards for application use in Chicago, IL. and features Plug N' Play connectors for easy installation. Standard bracket has 135° rotation capability for adjusting beam direction. Flicker free dimmable to <1% full brightness with 0-10V dimming.



SPECIFICATIONS

PHYSICAL

BC	beam spread	40°, 60°, 120°, Wall Wash
	LEDs per foot	14 per foot
WC	dimensions	12" x 1.28" x .95", 48" x 1.28" x .95"
	weight	1 foot (0.75 lbs), 4 foot (3 lbs)
	housing	extruded aluminum housing with tooled end caps
	lens	standard: etched polycarbonate
	mounting	standard: surface mount bracket with 135° rotation
	ingress protection	IP44 rated for damp and dry interior locations
	luminaire connections	daisy chain with male and female, 6-PIN, plug-n-play connectors

PERFORMANCE

WC	lumen output (all on)	1250 lm/ft max @ 90 CRI, 4000K, 10W/ft max
	lumen maintenance	L70 ≥ 70,000 hours
	operating temperature	-4°F to 104°F (-20°C to 40°C)
	color consistency	2 SDCM / standard: 93 CRI
	warranty	5-Year limited warranty

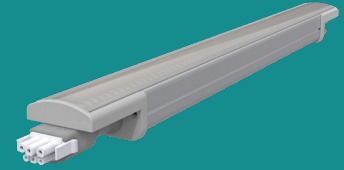
ELECTRICAL

BC	input voltage	Universal 120 – 277 VAC
	power supply	Integral Class II, electronic high-power factor 98% @ 120V
	certification	ETL / cETL listed
	standards	UL 1598, CSA Std C22.2 No. 250.0, IESLM-79/LM-80, FCC Part 15
	power consumption	1 ft @ full power (10W), 4 ft @ full power (40W)
	dimming	Integral 0-10V dimming, <1% (dim-to-off)

WC = World Class Features

BC = Best in Class Features

MINI COVELINE 2



Ordering Information

QuickShip max order = 25 pcs

PART NUMBERS

MC2		UNV		LD							
MODEL	LENGTH	VOLTAGE	COLOR	POWER (*Typical)	OPTICS	DIMMING					
MC2	1	12 in. [305 mm]	UNV	120 - 177 VAC	927	93 CRI, 2700K	1ft 1 foot luminaire	40	40° beam	LD	0-10V Dimming, <1% Dim-to-Off
	4	48 in. [1219 mm]		930	93 CRI, 3000K	02W	2W (250 Lumens)	60	60° beam		
					935	93 CRI, 3500K	04W	4W (500 Lumens)	120	120° beam	
					940	93 CRI, 4000K	06W	6W (800 Lumens)	WW	Wall Wash	
							08W	8W (1000 Lumens)			
							10W	10W (1250 Lumens)			
							4ft 4 foot luminaire				
							08W	8W (1000 Lumens)			
							16W	16W (2000 Lumens)			
							24W	24W (3200 Lumens)			
							32W	32W (4000 Lumens)			
							40W	40W (5000 Lumens)			

*Typical Lumens based on 940 Color

Cable Accessories (Indicate the quantity needed for each item.)

REQUIRED: Starter Cable (**SC6.0-6PIN**) and Terminator Cap (**TCAP-6PIN**) for every run. **Maximum Run Length** = 80 feet @ 120 VAC, 160 feet @ 277 VAC, 10W max

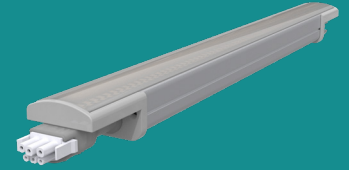
- _____ **SC6.0-6PIN** 6.0 Foot (72Inch) Starter Connection Cord, 6 Pin
- _____ **TCAP-6PIN** Termination Cap, 6 Pin
- _____ **EC0.5-6PIN** 0.5 Foot (6 Inch) Extension Cord, 6 Pin
- _____ **EC1.0-6PIN** 1.0 Foot (12 Inch) Extension Cord, 6 Pin
- _____ **EC2.0-6PIN** 2.0 Foot (24 Inch) Extension Cord, 6 Pin
- _____ **EC5.0-6PIN** 5.0 Foot (60 Inch) Extension Cord, 6 Pin

Mounting Options (Indicate the quantity needed for each item.) Each luminaire includes Surface Mount Bracket with 135° rotation.

- _____ **SSL-TRK1** Mounting Track 12 Inch
- _____ **SSL-TRK4** Mounting Track 48 Inch
- _____ **TRK-ADAPTER** Required Track Adapter for Mounting Track (2 per 1 Foot, 4 per 4 Foot)

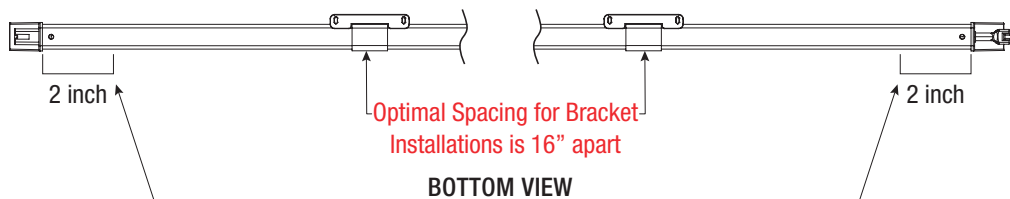
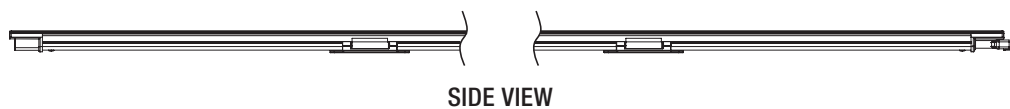
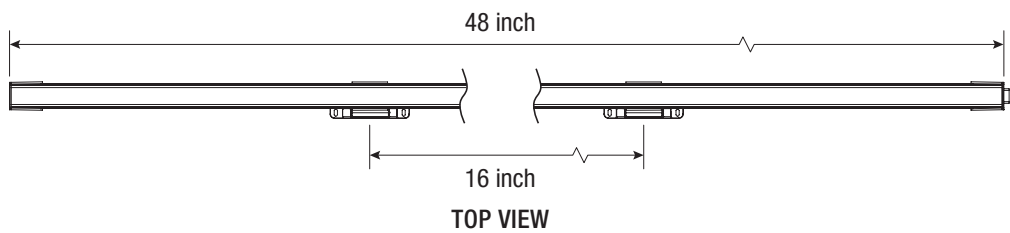
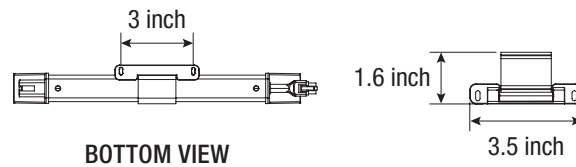
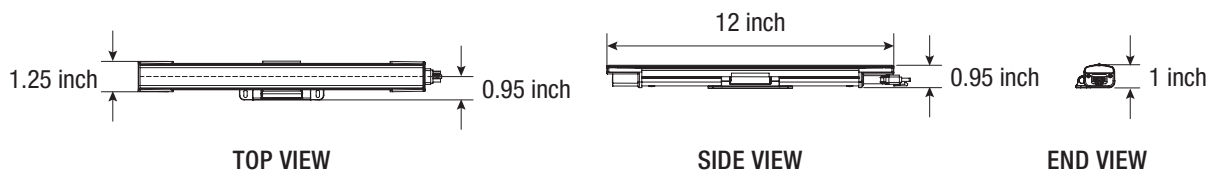
MINI COVELINE 2

Standard Dimensions



DIMENSIONS WITH STANDARD BRACKET

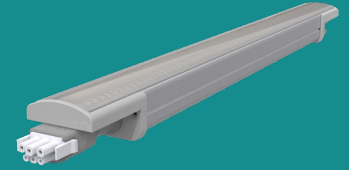
	1 ft	4 ft
length	12" W	48" W
width	1.28" W	1.28" W
width w/ bracket	1.66" D	1.66" D
height	.86" D	.86" D
height w/ bracket	.95" D	.95" D



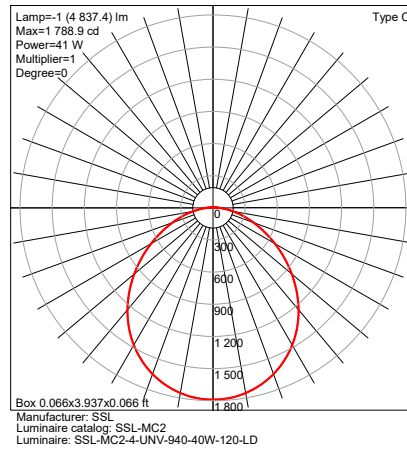
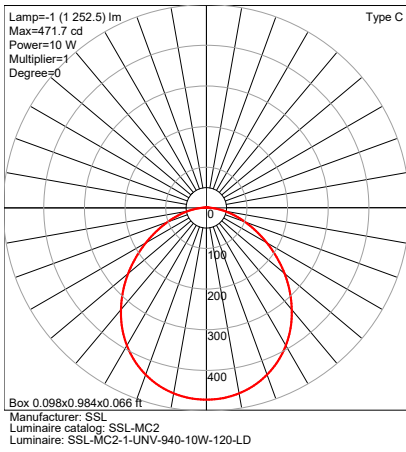
TO PREVENT VOIDING THE WARRANTY, DO NOT INSTALL BRACKETS WITHIN 2" FROM THE LUMINAIRE ENDS

MINI COVELINE 2

Photometry

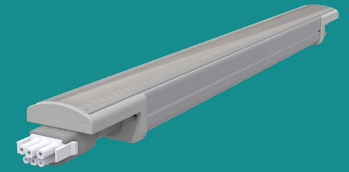


OPTICAL DISTRIBUTION



PERFORMANCE

Model	Connected Wattage	4000K
MC2-1	10	1250
MC2-4	40	5000

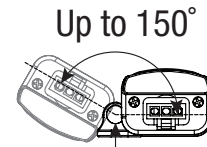
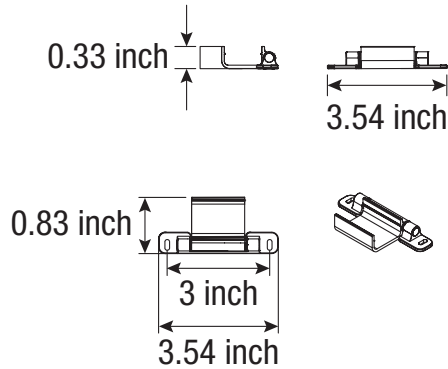


Mounting Options

STANDARD ADJUSTABLE BRACKET

Minimum Bracket Requirements			
MC2-1	1	MC2-4	2

- 150° Standard Adjustable Bracket
- Step adjustments at 15° increments
- Locks in position with hex screw

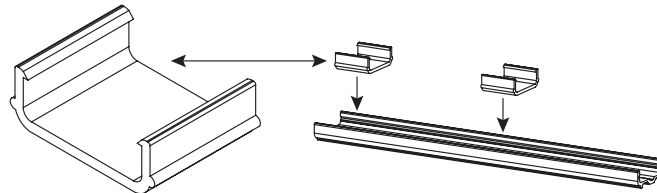


Up to 150°
Bracket Hex Screw
to Lock Position

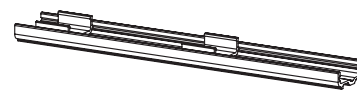
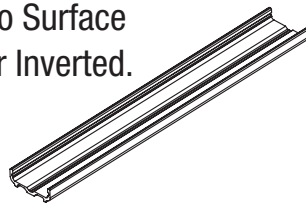
OPTIONAL TRACK MOUNTING KIT (SSL-TRK1 & SSL-TRK4) (Kit includes track & adapter brackets)

TRK-ADAPTER Bracket Requirements			
SSL-TRK1	1	SSL-TRK4	2

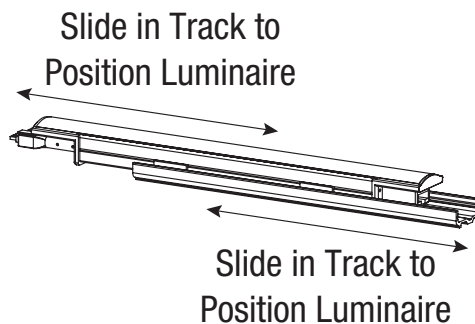
Track-Adapter



Track Mount to Surface
at Any Angle or Inverted.



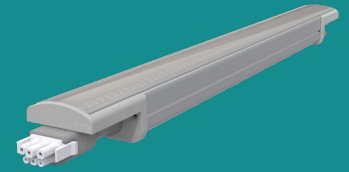
Plastic Track and Track Bracket
with Snap Together Assembly
(12 inch track shown)



Slide in Track to
Position Luminaire

Slide in Track to
Position Luminaire

MINI COVELINE 2

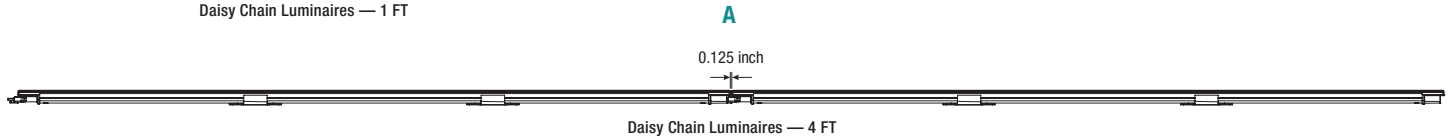
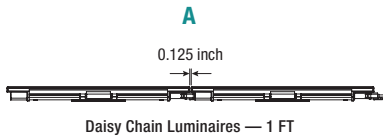


Connectivity Options

CONNECTIONS & CABLES

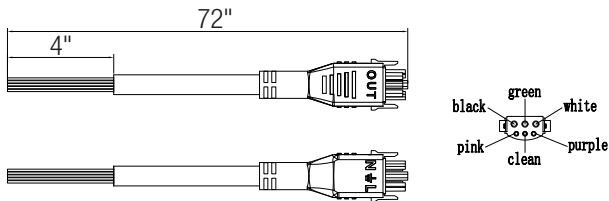
- A:** 0.125 Inch Between Luminaires
- B:** **SC6.0-6PIN** - 6.0 Foot (71Inch) Starter Connection Cord, 6 Pin
- C:** **EC0.5-6PIN** - 0.5 Foot (6 Inch) Extension Cord, 6 Pin
- C:** **EC1.0-6PIN** - 1.0 Foot (12 Inch) Extension Cord, 6 Pin
- C:** **EC2.0-6PIN** - 2.0 Foot (24 Inch) Extension Cord, 6 Pin
- C:** **EC5.0-6PIN** - 5.0 Foot (60 Inch) Extension Cord, 6 Pin
- D:** **TCAP-6PIN** - Termination Cap, 6 Pin

VOLTAGE	W/FT	MAX RUN LENGTH (FT)
120 VAC	10W	80
277 VAC	10W	160
120 VAC	8W	100
277 VAC	8W	200
120 VAC	6W	120
277 VAC	6W	240
120 VAC	4W	180
277 VAC	4W	370
120 VAC	2W	220
277 VAC	2W	440

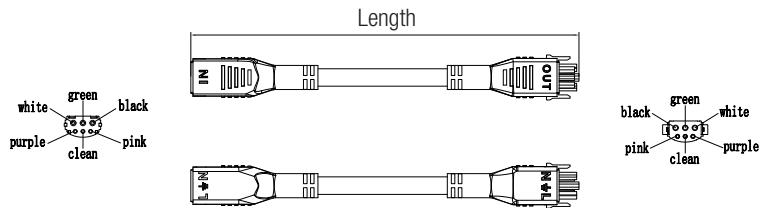


ENSURE FIRST LUMINAIRE IS ORIENTED TO ACCEPT MALE CONNECTOR STARTER CABLE

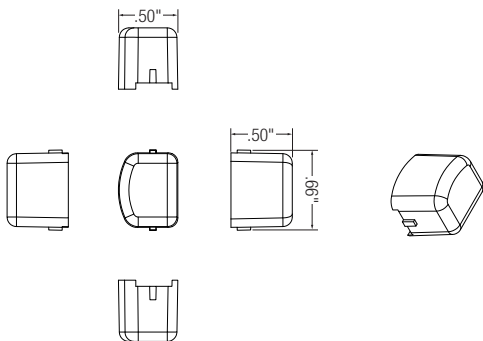
B: STARTER CABLE



C: EXTENSION CABLES

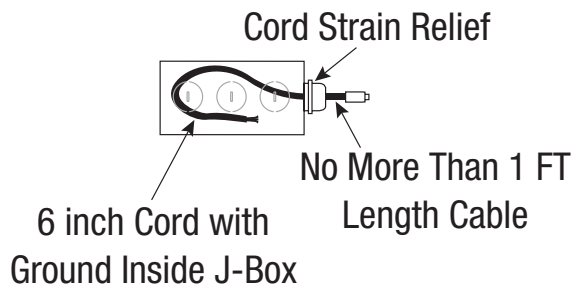


D: TERMINATOR CAP — TCAP-6PIN



STEEL JUNCTION BOX WIRING FOR STARTER CONNECTION CORD — SC6.0-6PIN

MC2 features Chicago Code Compliant (CCC) connectors. See below for Starter Connection Cord (SC6.0-6PIN) setup details.



Due to continuous development and improvements, specifications are subject to change without notice. Product use certifies agreement to Solid State Luminaires terms and conditions.