

Type:
Fixture:
Project:

Approved:

MINI COVELINE

Warm-Dim Direct View MCWDDV-E



MCWDDV-E is an ultra slim profile, direct view luminaire, about 1 inch tall, that's perfect for tight spaces. **MCWDDV-E** is available in 1 ft or 4 ft lengths and provides a smooth warm-dim effect from 1800-2700K 90CRI simulating incandescent technology. The housing is extruded aluminum with tooled end caps for indoor dry and damp locations. It's Chicago Code Compliant approved for application use in Chicago, IL. with Plug N' Play connectors for easy installation. Standard bracket rotates 135 degrees and clips to either side of the fixture. Smooth dimming to 0% full brightness with ELV trailing edge dimming.

SPECIFICATIONS

PHYSICAL

beam spread	120°
dimensions	12" x 1.3" x 1.2" 48" x 1.3" x 1.2"
weight	1 foot (.75 lbs) / 4 foot (3 lbs)
housing	extruded aluminum housing with tooled end caps
lens	standard: etched polycarbonate
mounting	standard: surface mount bracket with 135° rotation
ingress protection	IP44 rated for damp and dry interior locations
fixture connections	daisy chain with male and female, 3-PIN, plug-n-play connectors

PERFORMANCE

color temperature	1800K–2700K (Dim-to-Warm)
lumen output [all on]	300 lm/ft @ 2700K
lumen maintenance	≥ 70,000 hours / L70
operating temperature	-4°F to 104°F (-20°C to 40°C)
color consistency	2 SDCM / standard: 90 CRI (R9 +60)
junction temperature	60°C @ T ^a 25°C
warranty	5 Year limited warranty (refer to website for details)

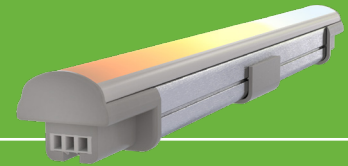
ELECTRICAL

input voltage	120 AC Only, 50/60 Hz
power supply	Integral Class II, electronic high-power factor 98% @ 120V
certification	ETL / cETL listed, CEC Title 24 - JA8 Compliant
standards	UL 1598 / CSA Std C22.2 No. 250.0; IESLM-79/LM-80; FCC Part 15 Class A
power consumption	1 ft @ full power (5W) 4 ft @ full power (18W) ASHRAE Compliant
dimming	(ELV) electronic low-voltage trailing edge, synchronized w/soft shut-off , (reverse phase) dimming < 3%



Due to continuous development and improvements, specifications are subject to change without notice. Solid State Luminaires reserves the right to change lab test details or specifications without notice. Product use certifies agreement to Solid State Luminaires terms and conditions.

Ordering Information



PART NUMBERS

MCWDDV-E		18K-27K	CRI90	120
MODEL	LENGTH	CCT	CRI	OPTICS
MCWDDV-E MINI COVELINE WarmDim, DirectView, ELV (120V ONLY)	1 12 in. [305 mm] 4 48 in. [1219 mm]	18K-27K 1800K-2700K	CRI90 90 CRI	120 120° beam

Cable Accessories (Indicate the quantity needed for each item.)

REQUIRED: Starter Cable (**SC6**) and Terminator Cap (**TCAP**) for every run. **Maximum Run Length** = 80 feet @ 120V AC

_____ SC6 6 ft. Starter Connection Cord	_____ EC06 6 in. Extension Cord
_____ TCAP Terminator Cap	_____ EC12 12 in. Extension Cord
	_____ EC24 24 in. Extension Cord
	_____ EC60 60 in. Extension Cord

Mounting Options (Indicate the quantity needed for each item.) Each fixture includes Surface Mount Bracket with 135° rotation.

_____ SSL-TRK1 Mounting Track 12 inch
_____ SSL-TRK4 Mounting Track 48 inch
_____ TRK-ADAPTER Required Track Adapter for Mounting Track (2 per 1ft, 4 per 4ft)

Use Module Only to Convert 0-10V Signal to ELV Dimming

DIMO-10VELV is a dimming module that converts a 0-10V dimming signal to an ELV (electronic low-voltage) reverse phase dimming signal for ELV dimmable lighting products.

Control Components (Indicate the quantity needed for each item.) (1 module per run) (Indoor rated)

REQUIRED: Starter Cable (SC6) and Terminator Cap (TCAP) for every run.

_____ DIMO-10VELV-UNV-OJBM-IJBM-BLA 0-10V ELV Dim Module, Output Junction Box Mount (12" lead wire), Input Junction Box Mount (12" lead wire), Interior Rated Enclosure, Black Anodized Alum.
_____ DIMO-10VELV-UNV-OCPPM-ICPPM-BLA 0-10V ELV Dim Module, Output Conduit Pipe Mount (96" lead wire), Input Conduit Pipe Mount (96" lead wire), Interior Rated Enclosure, Black Anodized Alum.

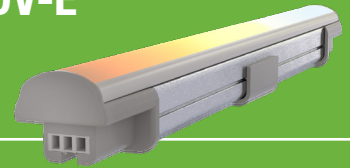
REQUIRED: Extension Cord (ECXX) XX=06, 12, 24, or 60 Inch Lengths (Pick Length to use based on 1st fixture to DIMO-10VELV unit distance) and Terminator Cap (TCAP) for every run.

_____ DIMO-10VELV-UNV-OSMM-IJBM-BLA 0-10V ELV Dim Module, Output Starter Cord Mount (6" lead wire), Input Junction Box Mount (6" lead wire), Interior Rated Enclosure, Black Anodized Alum.
--

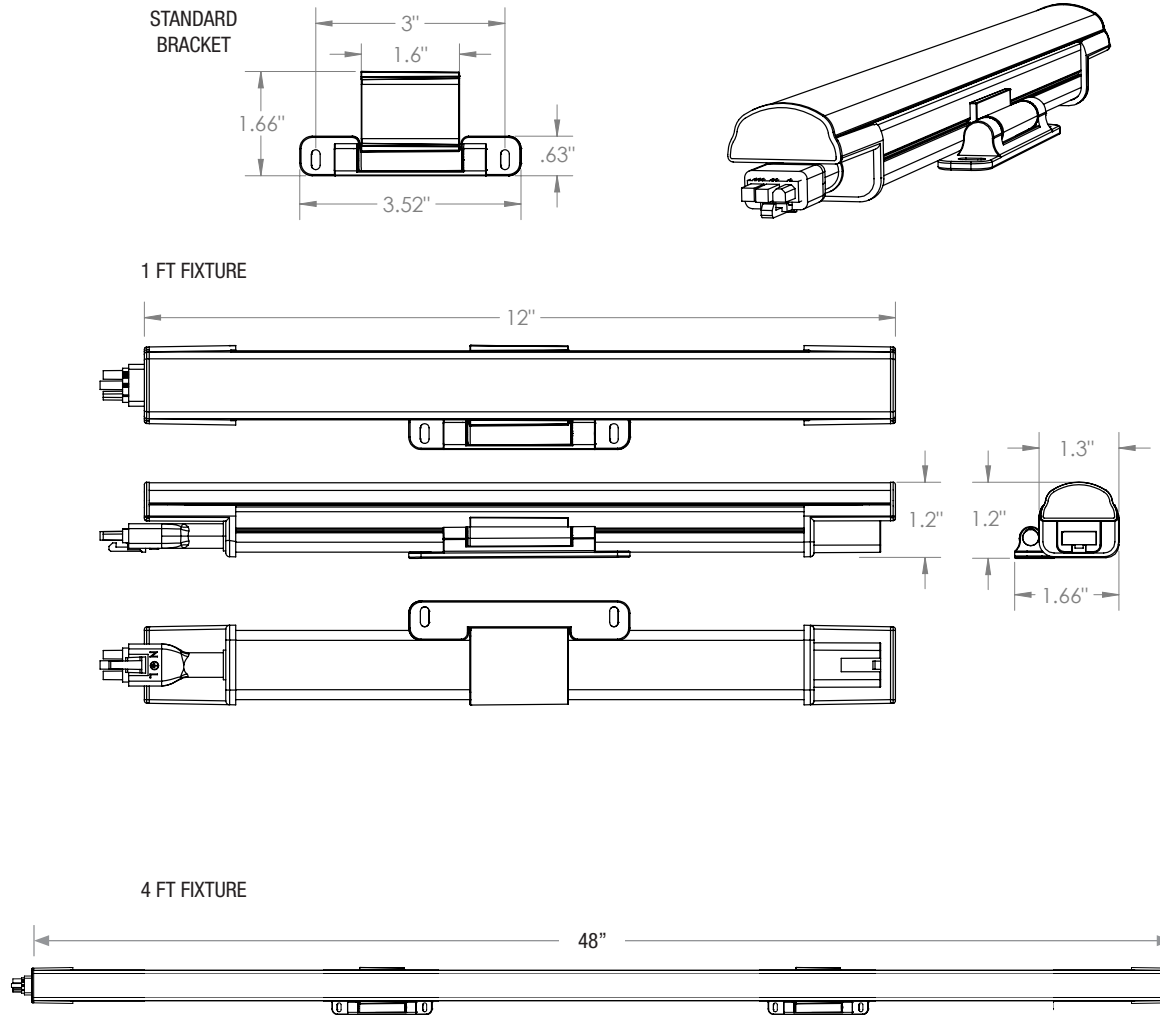
Due to continuous development and improvements, specifications are subject to change without notice. Solid State Luminaires reserves the right to change lab test details or specifications without notice. Product use certifies agreement to Solid State Luminaires terms and conditions.

MINI COVELINE WDDV-E

Standard Dimensions



DIMENSIONS WITH STANDARD BRACKET



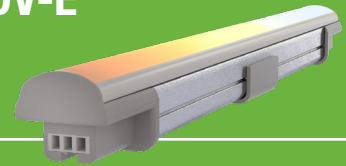
Optimal spacing for bracket installation is 16" apart.

TO PREVENT VOIDING THE WARRANTY, DO NOT INSTALL BRACKETS WITHIN 2" OF THE ENDS OF FIXTURE.

Due to continuous development and improvements, specifications are subject to change without notice. Solid State Luminares reserves the right to change lab test details or specifications without notice. Product use certifies agreement to Solid State Luminares terms and conditions.

MINI COVELINE WDDV-E

Photometry



MCWDDV-E 1FT 18K-27K 120°

Filename: MCWDDV-E-1-18K-27K-CRI90-120

Manufacturer: SSL

Luminaire: MCWDDV-E-1-18K-27K-CRI90-120

Luminaire Cat: MCWDDV-E

Lamp Output: Total luminaire Lumens: 308.2

Max Candela: 77.4 at Horizontal: 112.5°, Vertical: 10°

Input Wattage: 5.299

Luminous Opening: Rectangle w/Luminous Sides (L: 11.81", W: 1.97", H: 1.18")

Test: 6611

Test Date: Tuesday, November 23, 2021

Test Lab: ITL Illuminations Testing Laboratory

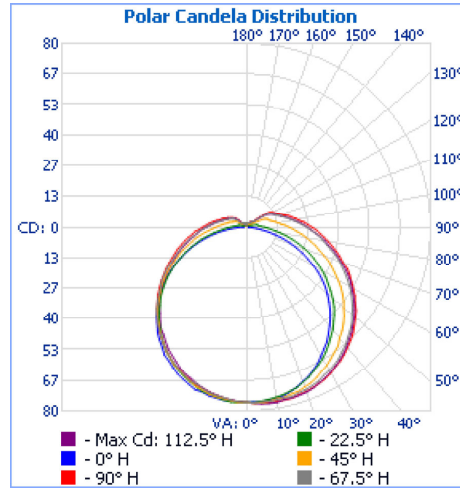
Photometry : Type C

CIE Class: Semi-Direct

Cutoff Class: Noncutoff

	Illuminance at a Distance		
	Center Beam fc	Beam Width	
1.7ft	26.4 fc	5.6 ft	9.3 ft
3.3ft	7.01 fc	10.8 ft	18.0 ft
5.0ft	3.05 fc	16.4 ft	27.3 ft
6.7ft	1.70 fc	22.0 ft	36.6 ft
8.3ft	1.11 fc	27.2 ft	45.4 ft
10.0ft	0.76 fc	32.8 ft	54.7 ft

■ Vert. Spread: 117.3°
■ Horiz. Spread: 139.8°



Zonal Lumen Summary

Zone	Lumens	% Luminaire
0-30	60.6	19.7%
0-40	100.9	32.7%
0-60	186.7	60.6%
60-90	84.3	27.4%
70-100	61.3	19.9%
90-120	29.6	9.6%
0-90	271.1	88%
90-180	37.1	12%
0-180	308.2	100%

MCWDDV-E 4FT 18K-27K 120°

Filename: MCWDDV-E-4-18K-27K-CRI90-120

Manufacturer: SSL

Luminaire: MCWDDV-E-4-18K-27K-CRI90-120

Luminaire Cat: MCWDDV-E

Lamp Output: Total luminaire Lumens: 1196.3

Max Candela: 300.9 at Horizontal: 22.5°, Vertical: 2.5°

Input Wattage: 18.188

Luminous Opening: Rectangle w/Luminous Sides (L: 47.24", W: 1.97", H: 1.18")

Test: 6610

Test Date: Tuesday, November 23, 2021

Test Lab: ITL Illuminations Testing Laboratory

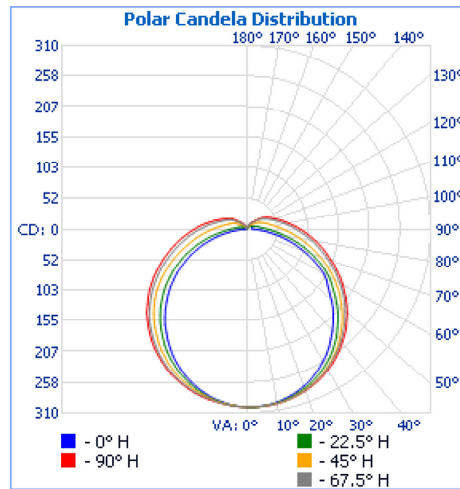
Photometry : Type C

CIE Class: Semi-Direct

Cutoff Class: Noncutoff

	Illuminance at a Distance		
	Center Beam fc	Beam Width	
1.7ft	104 fc	5.3 ft	9.3 ft
3.3ft	27.5 fc	10.4 ft	18.0 ft
5.0ft	12.0 fc	15.7 ft	27.3 ft
6.7ft	6.68 fc	21.1 ft	36.6 ft
8.3ft	4.35 fc	26.1 ft	45.3 ft
10.0ft	3.00 fc	31.5 ft	54.6 ft

■ Vert. Spread: 115.1°
■ Horiz. Spread: 139.8°



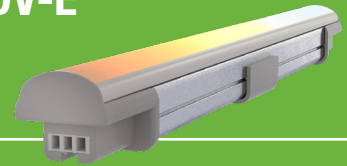
Zonal Lumen Summary

Zone	Lumens	% Luminaire
0-30	237.8	19.9%
0-40	395.6	33.1%
0-60	731.8	61.2%
60-90	326.0	27.3%
70-100	233.0	19.5%
90-120	108.7	9.1%
0-90	1,057.9	88.4%
90-180	138.5	11.6%
0-180	1,196.3	100%

Due to continuous development and improvements, specifications are subject to change without notice. Solid State Luminaires reserves the right to change lab test details or specifications without notice. Product use certifies agreement to Solid State Luminaires terms and conditions.

MINI COVELINE WDDV-E

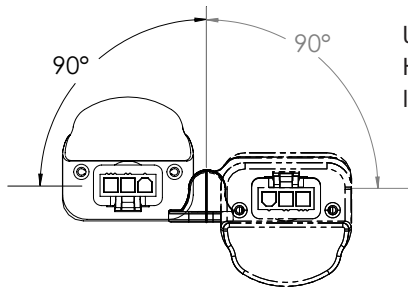
Mounting Options



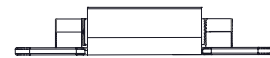
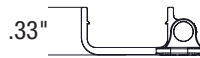
STANDARD ADJUSTABLE BRACKET

Minimum Bracket Requirements			
MC-1	1	MC-4	2

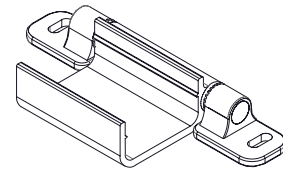
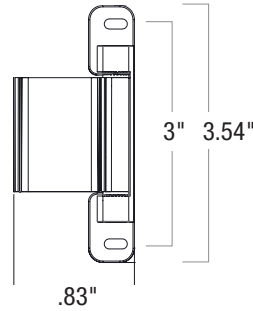
- 180° Standard Adjustable Bracket
- Step adjustments at 15° increments
- Locks in position with hex screw



Use Bracket Hex Screw to lock position

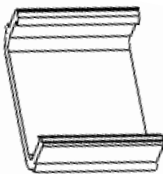


3.54"



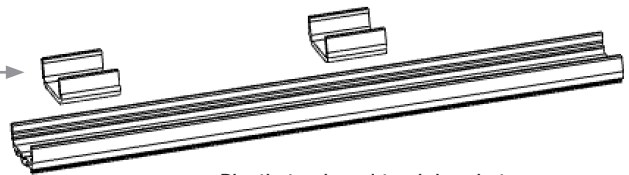
OPTIONAL TRACK MOUNTING KIT (SSL-TRK1 & SSL-TRK4) (Kit includes track & adapter brackets)

TRK-ADAPTER Bracket Requirements			
SSL-TRK1	1	SSL-TRK4	2



TRK-ADAPTER

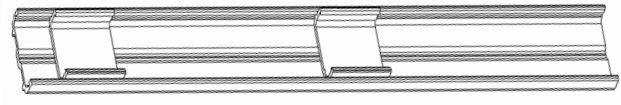
MC Track Bracket:
Snaps onto fixture.



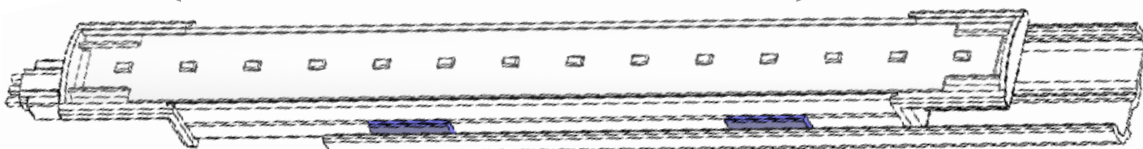
Plastic track and track bracket
with Snap Together Assembly



Track mounts to surface
at any angle or inverted.



Slide fixture back-and-forth in track and into position.

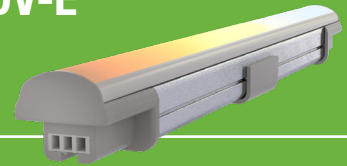


Slide fixture back-and-forth in track and into position.

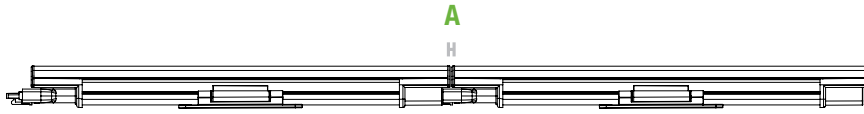
Due to continuous development and improvements, specifications are subject to change without notice. Solid State Luminaires reserves the right to change lab test details or specifications without notice. Product use certifies agreement to Solid State Luminaires terms and conditions.

MINI COVELINE WDDV-E

Connectivity Options



CONNECTIONS & CABLES

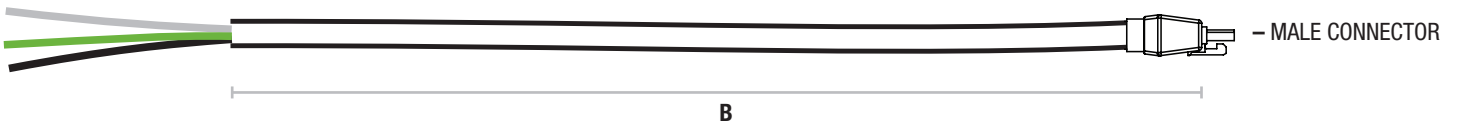


Daisy Chain Fixtures (1') 4 foot luminaires has same spacing.

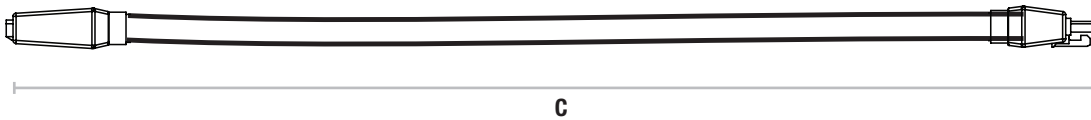
- A:** .125" between fixtures
- B:** SC6 - 6ft Starter Cord
- C:** EC6 12 in. Extension Cord
- C:** EC12 12 in. Extension Cord
- C:** EC24 24 in. Extension Cord
- C:** EC60 60 in. Extension Cord
- D:** TCAP 1.13" Terminator Cap

B: STARTER CABLES

INSURE FIRST FIXTURE IS ORIENTED TO ACCEPT MALE CONNECTOR STARTER CABLE

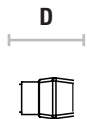


C: EXTENSION CABLES



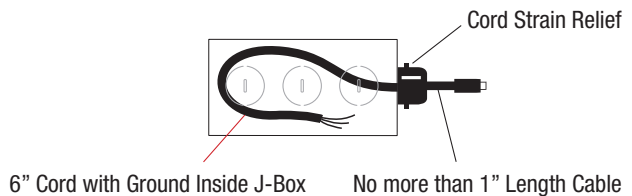
D: TERMINATOR CAP

TCAP



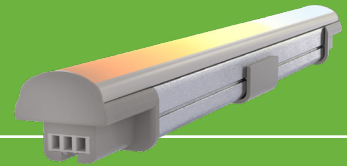
MC features Chicago Code Compliant (CCC) connectors. See below for Starter Connection Cord (SC6) setup details.

Steel Junction Box Wiring for Sarter Connection Cord (SC6)



Due to continuous development and improvements, specifications are subject to change without notice. Solid State Luminaires reserves the right to change lab test details or specifications without notice. Product use certifies agreement to Solid State Luminaires terms and conditions.

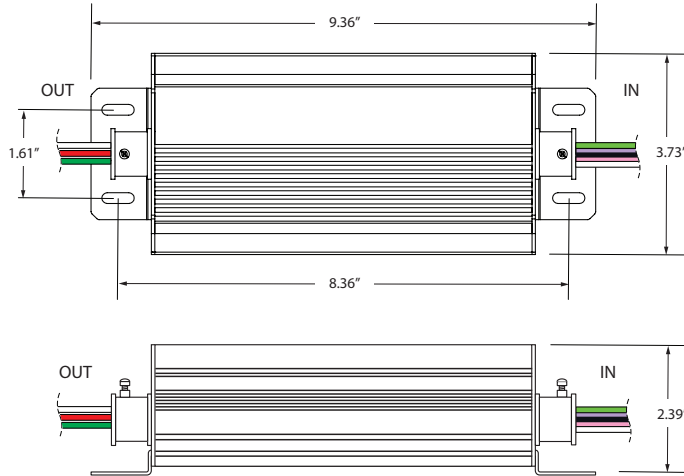
Control Components



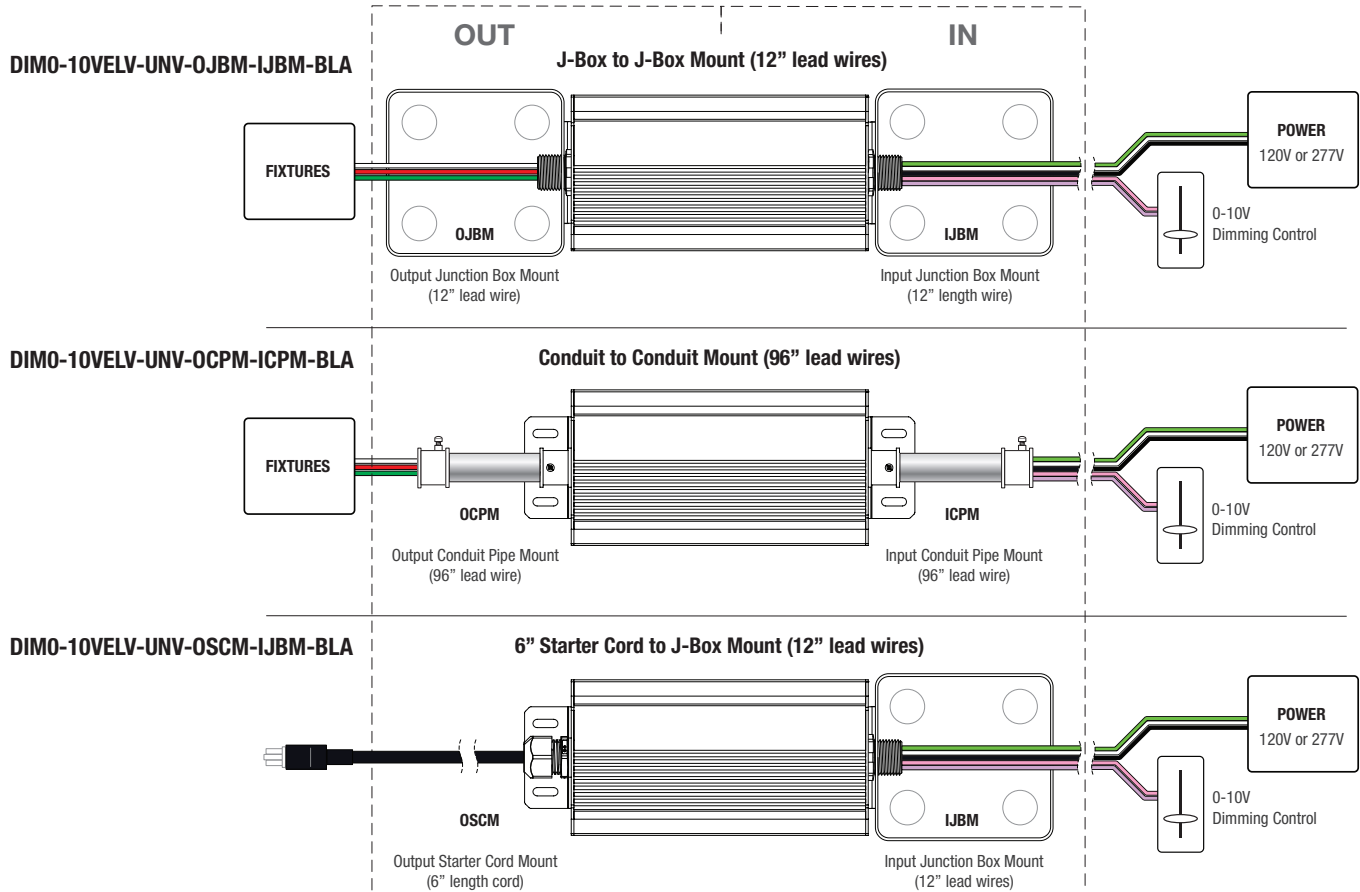
OVERALL DIMENSIONS (DIMO-10VELV)

Use Module Only to Convert 0-10V Signal to ELV Dimming

Converts 0-10V signal for ELV Dimming protocol.



CONNECTIVITY TYPES (DIMO-10VELV)



Due to continuous development and improvements, specifications are subject to change without notice. Solid State Luminaires reserves the right to change lab test details or specifications without notice. Product use certifies agreement to Solid State Luminaires terms and conditions.