

SSC4RC CYLINDER (CM: Cord Mount) INSTALLATION INSTRUCTIONS

CAUTION: BEFORE CONNECTING THE LUMINAIRE TO A POWER SUPPLY, MAKE SURE THE POWER IS SWITCHED OFF.



SSL
solid state luminaires

t 800.900.1730
3609 Swenson Ave.
St. Charles, IL 60174

DETAILED ILLUSTRATIONS

GENERAL:

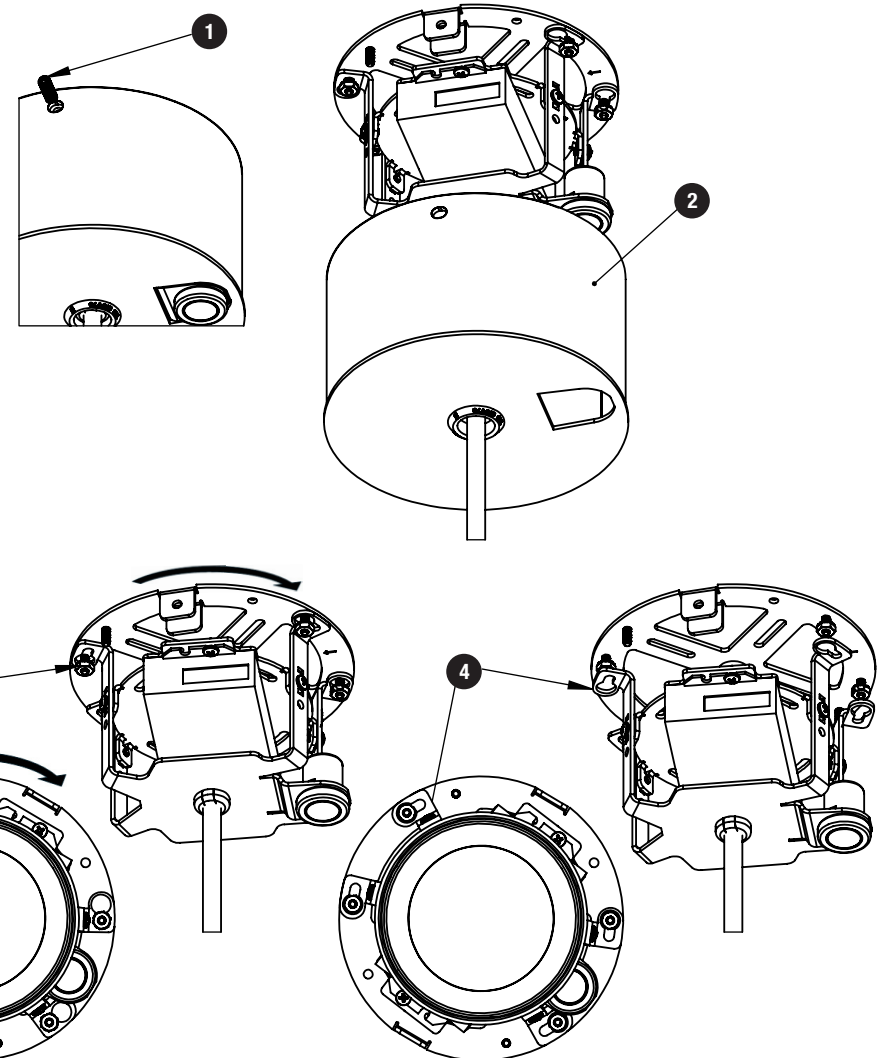
1. Luminaire must be installed by licensed electrician.
2. All electrical connections must be in accordance with local codes, ordinances, or the National Electrical Code.
3. Before starting the installation, make sure all electricity has been turned off and electrical breaker has been locked out and tagged out.
4. To ensure the success of the installation, be sure to read these instructions and review the diagrams thoroughly before beginning.

NOTE: The important safeguards and instructions appearing in this manual are not meant to cover all possible conditions and situations that may occur.

INSTALLATION INSTRUCTIONS:

- 1) Remove both Set Screws located at the top of the Canopy. Set aside for later.
- 2) Carefully lower the Canopy cover down the Cord.
- 3) Loosen the (4) nuts attaching the driver bracket cage on the mounting plate down about an 1/8".
- 4) De-attach the driver bracket cage from the mounting plate by rotating it clockwise to the larger hole of the key slot hole to clear the loosened nuts and remove.

NOTE: CM - Cord Mount Installation Instructions continued on page 2.



SSC4RC CYLINDER (CM: Cord Mount) INSTALLATION INSTRUCTIONS

CAUTION: BEFORE CONNECTING THE LUMINAIRE TO A POWER SUPPLY, MAKE SURE THE POWER IS SWITCHED OFF.



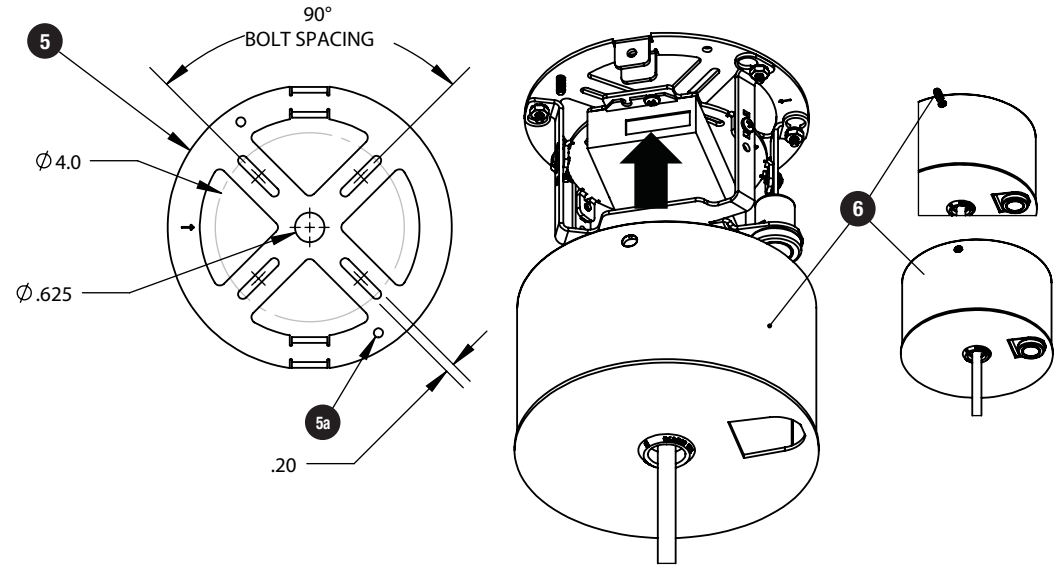
SSL
solid state luminaires

t 800.900.1730
3609 Swenson Ave.
St. Charles, IL 60174

DETAILED ILLUSTRATIONS

INSTALLATION INSTRUCTIONS:

- 5) Using the slotted opening of the mounting plate, attach the mounting plate to the Junction Box with fasteners specific to the Junction Box (by others).
- 5a) If necessary, there are (2) additional mounting holes that can be used for fasteners by others to the surrounding surface for additional support.
- 6) Connect the White, Black and Green wires to input power from Junction Box.
- 7) Slide Canopy back into original position, re-fasten both Set Screws back into place.



SSC4RC CYLINDER (SPM: Slope Pendant Mount) INSTALLATION INSTRUCTIONS

CAUTION: BEFORE CONNECTING THE LUMINAIRE TO A POWER SUPPLY, MAKE SURE THE POWER IS SWITCHED OFF.



SSL
solid state luminaires

t 800.900.1730
3609 Swenson Ave.
St. Charles, IL 60174

DETAILED ILLUSTRATIONS

GENERAL:

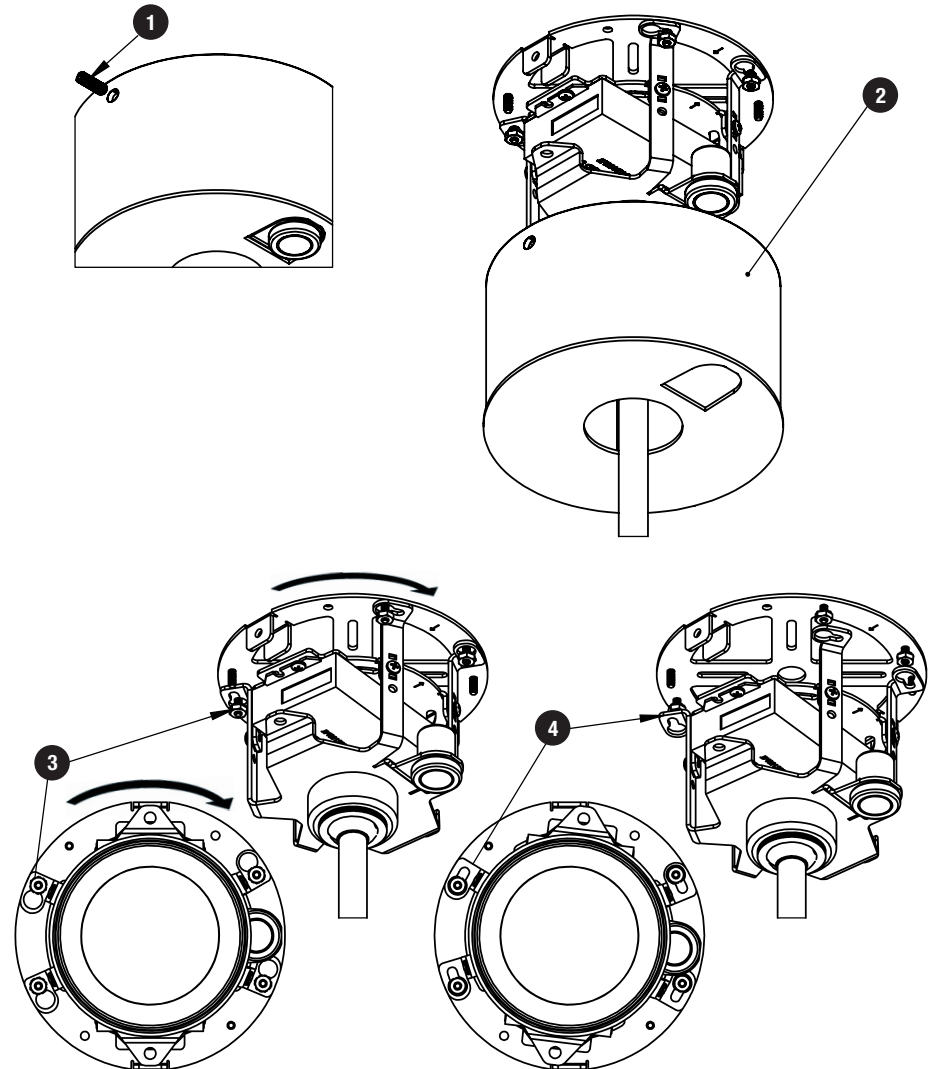
1. Luminaire must be installed by licensed electrician.
2. All electrical connections must be in accordance with local codes, ordinances, or the National Electrical Code.
3. Before starting the installation, make sure all electricity has been turned off and electrical breaker has been locked out and tagged out.
4. To ensure the success of the installation, be sure to read these instructions and review the diagrams thoroughly before beginning.

NOTE: The important safeguards and instructions appearing in this manual are not meant to cover all possible conditions and situations that may occur.

INSTALLATION INSTRUCTIONS:

- 1) Remove both Set Screws located at the top of the Canopy. Set aside for later.
- 2) Carefully lower the Canopy cover down the Pendant stem.
- 3) Loosen the (4) nuts attaching the driver bracket cage on the mounting plate down about an 1/8".
- 4) De-attach the driver bracket cage from the mounting plate by rotating it clockwise to the larger hole of the key slot hole to clear the loosened nuts and remove.

NOTE: SPM - Slope Pendant Mount Installation Instructions continued on page 2.



SSC4RC CYLINDER (SPM: Slope Pendant Mount) INSTALLATION INSTRUCTIONS

CAUTION: BEFORE CONNECTING THE LUMINAIRE TO A POWER SUPPLY, MAKE SURE THE POWER IS SWITCHED OFF.



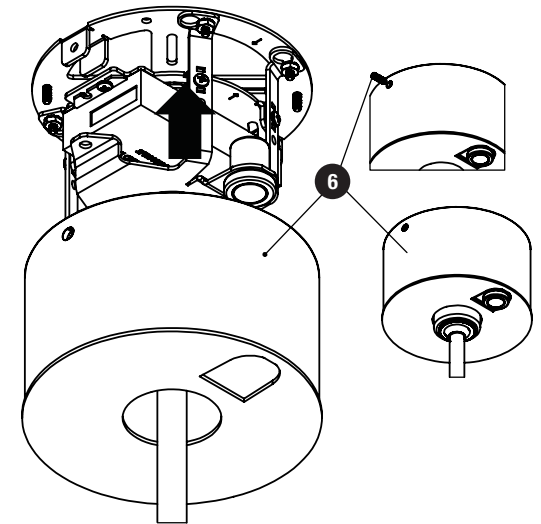
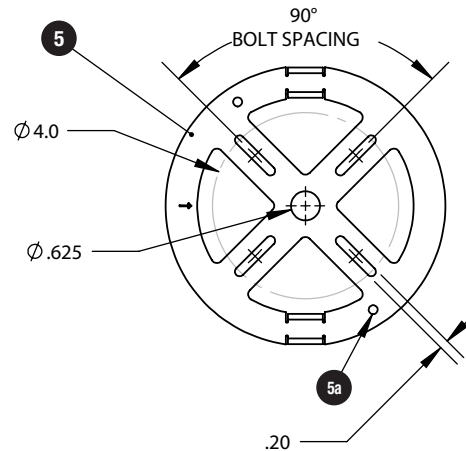
SSL
solid state luminaires

t 800.900.1730
3609 Swenson Ave.
St. Charles, IL 60174

DETAILED ILLUSTRATIONS

INSTALLATION INSTRUCTIONS:

- 5) Using the slotted opening of the mounting plate, attach the mounting plate to the Junction Box with fasteners specific to the Junction Box (by others).
- 5a) If necessary, there are (2) additional mounting holes that can be used for fasteners by others to the surrounding surface for additional support.
- 6) Connect the White, Black and Green wires to input power from Junction Box.
- 7) Slide Canopy back into original position, re-fasten both Set Screws back into place.



SSC4RC CYLINDER (ACR: Aircraft Cable Mount) INSTALLATION INSTRUCTIONS

CAUTION: BEFORE CONNECTING THE LUMINAIRE TO A POWER SUPPLY, MAKE SURE THE POWER IS SWITCHED OFF.



SSL
solid state luminaires

t 800.900.1730
3609 Swenson Ave.
St. Charles, IL 60174

DETAILED ILLUSTRATIONS

GENERAL:

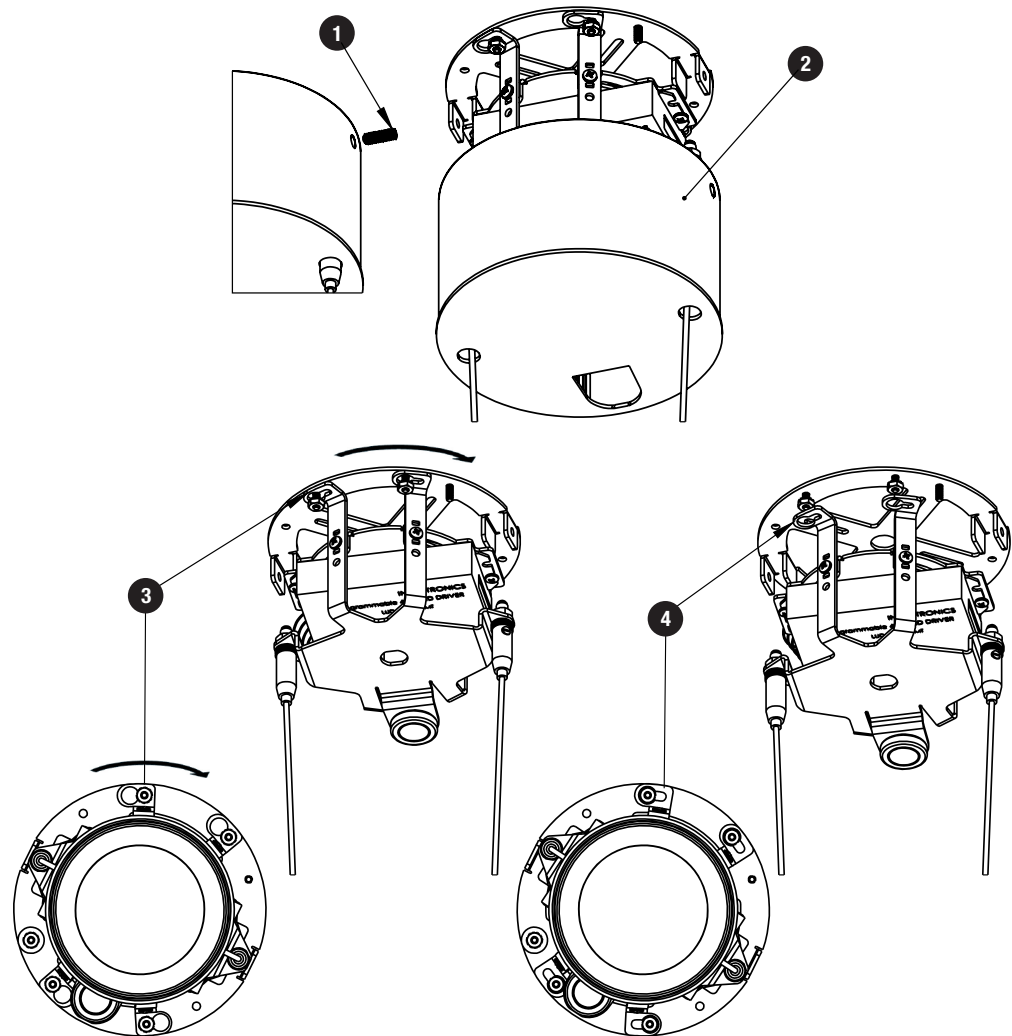
1. Luminaire must be installed by licensed electrician.
2. All electrical connections must be in accordance with local codes, ordinances, or the National Electrical Code.
3. Before starting the installation, make sure all electricity has been turned off and electrical breaker has been locked out and tagged out.
4. To ensure the success of the installation, be sure to read these instructions and review the diagrams thoroughly before beginning.

NOTE: The important safeguards and instructions appearing in this manual are not meant to cover all possible conditions and situations that may occur.

INSTALLATION INSTRUCTIONS:

- 1) Remove both Set Screws located at the top of the Canopy. Set aside for later.
- 2) Carefully lower the Canopy cover down Power Cables.
- 3) Loosen the (4) nuts attaching the driver bracket cage on the mounting plate down about an 1/8".
- 4) De-attach the driver bracket cage from the mounting plate by rotating it clockwise to the larger hole of the key slot hole to clear the loosened nuts and remove.

NOTE: ARC - Aircraft Cable Mount Installation Instructions continued on page 6.



SSC4RC CYLINDER (ACR: Aircraft Cable Mount) INSTALLATION INSTRUCTIONS

CAUTION: BEFORE CONNECTING THE LUMINAIRE TO A POWER SUPPLY, MAKE SURE THE POWER IS SWITCHED OFF.



SSL
solid state luminaires

t 800.900.1730
3609 Swenson Ave.
St. Charles, IL 60174

DETAILED ILLUSTRATIONS

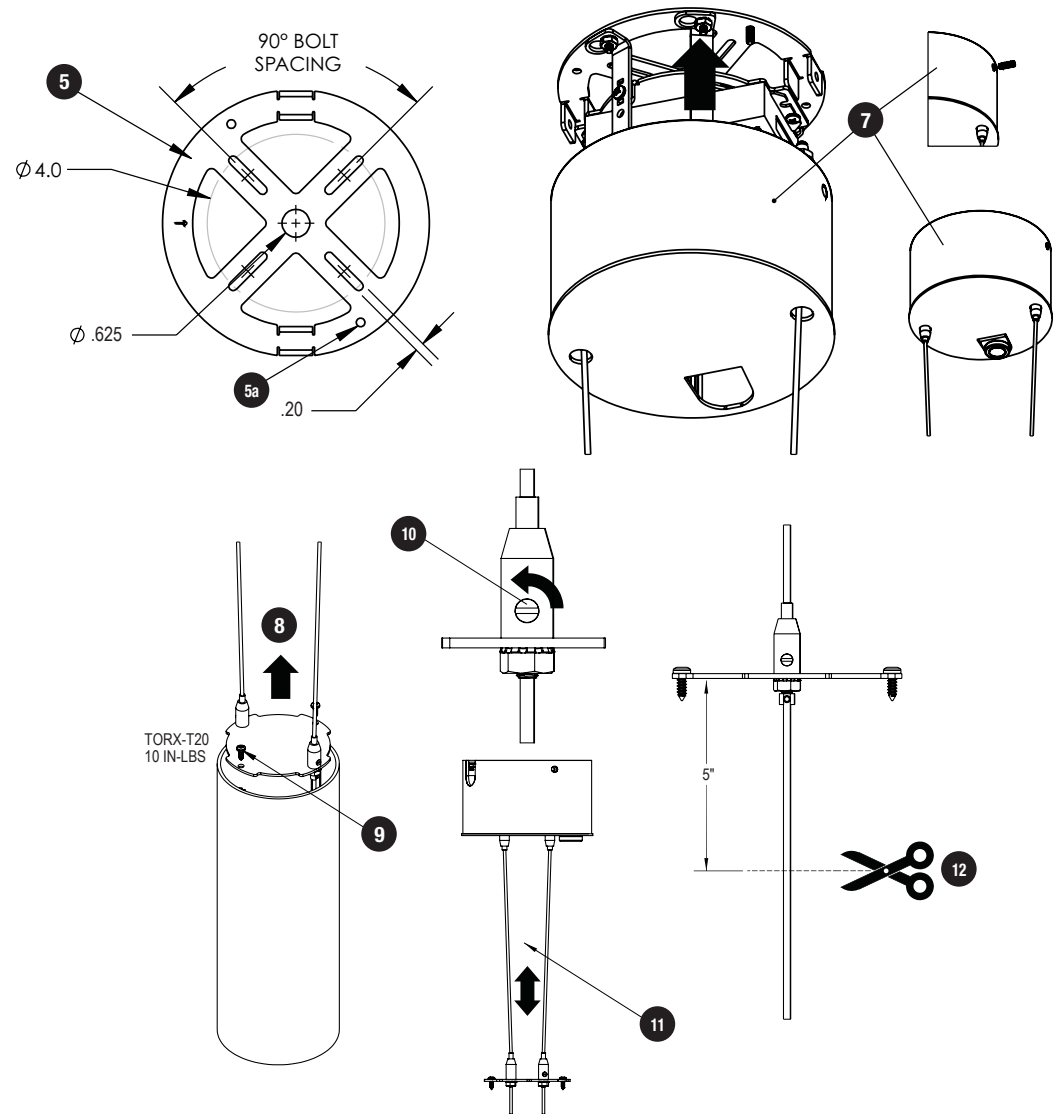
INSTALLATION INSTRUCTIONS:

- 5) Using the slotted opening of the mounting plate, attach the mounting plate to the Junction Box with fasteners specific to the Junction Box (by others).
- 5a) If necessary, there are (2) additional mounting holes that can be used for fasteners by others to the surrounding surface for additional support.
- 6) Connect the White, Black and Green wires to input power from Junction Box.
Height adjustment of Twin-Conductor Cable must be made at Cylinder End ONLY.
- 7) Raise the Canopy back into original position, re-fasten both Set Screws back into place.
- 8) Remove the Plate assembly located at the top of the Cylinder. The Plate is held in place (2) #8 Torx screws.
- 9) Unscrew the (2) Screws using a Torx T-20 Bit driver, torque to 10 IN-LBS. Remove the Top Plate from the assembly.
- 10) Unscrew the plastic Set Screw on both Cable-Grippers counterclockwise. This will allow the cable to pass through. Feed both Cables through the Grippers.
- 11) Manually adjust the Cable lengths on either side for desired distance to ceiling. The base lengths for Cabling is 120 inches.

NOTE: For best results, use a leveling tool (not provided) to ensure Cylinder hangs straight.

- 12) It is recommended to trim the Cable to a length of 5 inches from the Top Plate. A sharp pair of scissors is recommended for trimming excess Cable. The Kevlar reinforcement can get caught in other cutting implements.

NOTE: ARC - Aircraft Cable Mount Installation Instructions continued on page 7.



SSC4RC CYLINDER (ACR: Aircraft Cable Mount) INSTALLATION INSTRUCTIONS

CAUTION: BEFORE CONNECTING THE LUMINAIRE TO A POWER SUPPLY, MAKE SURE THE POWER IS SWITCHED OFF.



SSL
solid state luminaires

t 800.900.1730
3609 Swenson Ave.
St. Charles, IL 60174

DETAILED ILLUSTRATIONS

INSTALLATION INSTRUCTIONS:

- 13) When the desired distance is reached, use a Flat-Head Screwdriver to tighten the plastic Set Screw on both Grippers to **2 IN-LBS**.
- 14) Make sure the cable collar is in place to secure the cables into place then tighten to **2 IN-LBS**.

WARNING: Failure to tighten to proper torque can result in Gripper failure.

- 15) Strip the outer insulation from the Cables. At least 2 inches of exposed wiring is advised. It is recommended to use a wire stripping tool sized for 22 AWG solid wire (0.0806" ID)

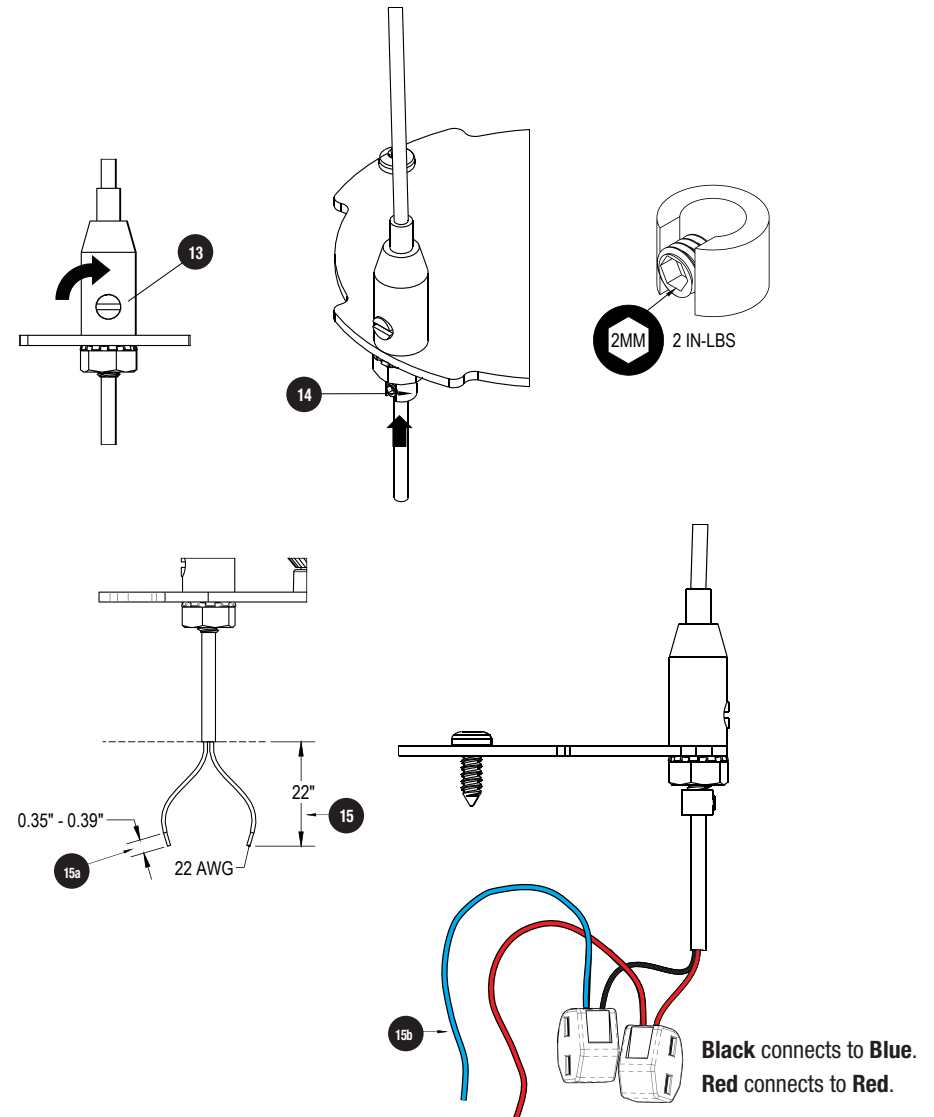
15a) Strip the exposed leads to 0.35" - 0.39" [9 - 10mm] of exposed conductor.

- 15b) Locate the dangling wires within the Cylinder and connect them to the Gripper Cable labeled **POWER**.

Black connects to **Blue**.

Red connects to **Red**.

NOTE: ARC - Aircraft Cable Mount Installation Instructions continued on page 8.



SSC4RC CYLINDER (ACR: Aircraft Cable Mount) INSTALLATION INSTRUCTIONS

CAUTION: BEFORE CONNECTING THE LUMINAIRE TO A POWER SUPPLY, MAKE SURE THE POWER IS SWITCHED OFF.



t 800.900.1730
3609 Swenson Ave.
St. Charles, IL 60174

DETAILED ILLUSTRATIONS

INSTALLATION INSTRUCTIONS:

- 16) Re-fasten the Top plate assembly onto the Cylinder Housing with the (2) #8 Torx Head Screws to using a Torx T-20 Bit driver. Torque to **10 IN-LBS**.

NOTE: Cables hidden for visual clarity.

NOTE: LED lamping is integral and NOT intended for general servicing.

IMPORTANT: All FC|SSL products can be cleaned with non-abrasive and chemical free agents. Use a soft cloth with mild detergent on exterior only.

