

Date:	Approved:
Type:	
Fixture:	
Project:	

UNDERLINE EDGE



Introducing the **UNDERLINE EDGE**, a remarkably sleek under-cabinet luminaire designed to provide an ultra-low profile. This low-voltage luminaire features a white opal lens that delivers a distinctive, pixelation-free illumination, ensuring no direct-view distortions.

The **UNDERLINE EDGE** is available in black or white housing colors, lengths of 12", 20", and 39", with a choice of color temperatures including 3000K, 3500K, or 4000K.

For added convenience and functionality, you can have a Touch Dimmer and Power Button Module. Crafted from extruded anodized aluminum, the housing is designed for interior applications. Plug N' Play connectors make setup and installation a breeze.

SPECIFICATIONS	
PHYSICAL	
beam spread	180°
lengths/dimensions	UNLE-1: 11.9" x 1.3" W x 0.3" D, UNLE-2: 19.8" x 1.3" W x 0.3" D, UNLE-3: 39.4" x 1.3" W x 0.3" D
weight	1 foot (.25 lbs), 4 foot (1.0 lbs)
housing	Extruded anodized aluminum
lens	White opal polycarbonate
mounting	Surface mount bracket included with fixture
ingress protection	Dry interior locations IP20 rated
fixture connections	Daisy chain with male and female plug and play connectors
PERFORMANCE	
color temperature	3000K, 3500K, 4000K
lumen output	290 lm / per foot, 300 lm / per foot, 310 lm / per foot
lumen maintenance	L70 > 60,000 hours
color consistency	3 SDCM / 84 CRI
temperature	-4°F to 104°F (-20°C to 40°C)
warranty	5-Year limited warranty
ELECTRICAL	
input voltage	24V DC (only)
power supply	Class II, 24W PPS / 50W 24V DC (2 Amps), 100W 24V DC (4.1 Amps) - (Use of non-SSL Power Supply voids warranty.)
certification	cULus / CE
standards	UL-Class II / CE Class III / IES LM-79 / LM-80
power consumption	UNLE-1: 6W, UNLE-2: 12W, UNLE-3: 18W
controls	Optional: Dimmable 0-10V (Available with UN power supply only.)

UNDERLINE EDGE



Ordering Information

PART NUMBERS

UNLE						
MODEL	LENGTH		CCT		OPTIONS	
UNLE UNDERLINE EDGE	1	11.9 in [300mm]	3K	3000K	BK	Black Housing
	2	19.8 in [500mm]	35K	3500K	WH	White Housing
	3	39.4 in [1000mm]	4K	4000K		

Included with fixture: Mounting clips (MC-E) with screws. Consult installation instruction for **Maximum Run Length** = 36W of fixtures (See options for accessories.)

ACCESSORIES (Indicate the quantity needed for each item. Black is standard, a [-WH] in the part number indicates White)

- | | | |
|---|--|---|
| _____ SC-UE-BK (-WH) Straight Connector | _____ PD (-WH) Portable Dimmer | _____ UN50i 50W Power Supply - UNV 120 - 277 VAC |
| _____ MC-E Mounting Clips | _____ TDE (-WH)(-BK) Touch Dimmer Control | _____ UN50i-2CC 50W Power Supply (2 Cords) - UNV 120 - 277 VAC |
| _____ CC3-E-BK Black Connector Cable (3 ft.) | _____ PPS-24-WH Portable Power Supply (24W) (120V only) | _____ UN100i 100W Power Supply - UNV 120 - 277 VAC |
| _____ CC3 (-WH) Connector Cable (3 ft.) | _____ 4S (-WH) 4-Way Splitter | _____ UN100i-2CC 100W Power Supply (2 Cords) - UNV 120 - 277 VAC |
| _____ CC6 (-WH) Connector Cable (6 ft.) | _____ 8S (-WH) 8-Way Splitter | _____ DIM 0-10V Dimmable Module (UNV only) |
| _____ C90E 90° Corner Connector | | |
| _____ C90VE 90° Vertical Corner Connector | | |

UNDERLINE EDGE



Dimensions

STANDARD DIMENSIONS

	1 ft	2 ft	3 ft
length	11.9" L	19.8" L	39.4" L
width	1.3" W	1.3" W	1.3" W
height	0.3" D	0.3" D	0.3" D

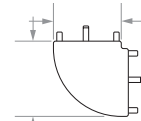
CONNECTOR DIMENSIONS

.625"

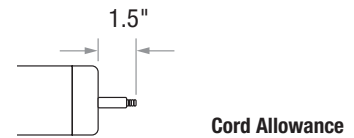
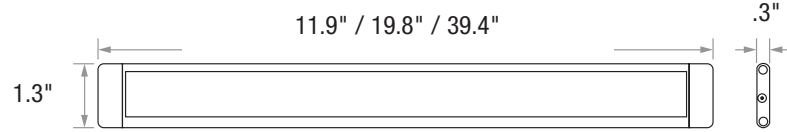


Straight Connector

1.615"

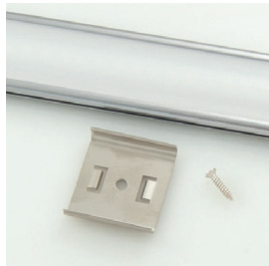


90° Corner Connector



Cord Allowance

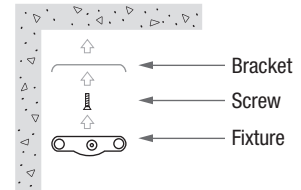
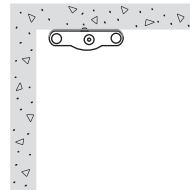
MC-E



MC-E Mounting Clip



Mounting Fastener



Bracket
Screw
Fixture

Performance	Connected		Lumens		
	Wattage	3000K	3500K	4000K	
UNLE-1	6	290	300	310	
UNLE-2	12	580	600	620	
UNLE-3	18	870	900	930	

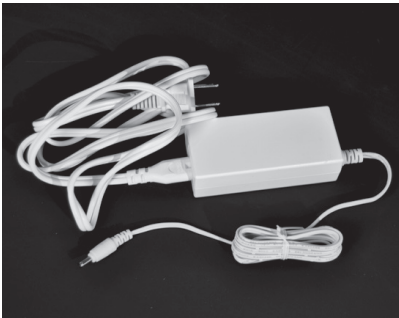
Due to continuous development and improvements, specifications are subject to change without notice.
Product use certifies agreement to Solid State Luminaires terms and conditions.

UNDERLINE EDGE



Accessories

POWER SUPPLY



PPS Portable Power Supply (120V only)

The following table illustrates how many fixtures each listed power supply can power.

Portable Power Supply (120V only)	UNLE-1 (1 ft)	UNLE-2 (2 ft)	UNLE-3 (3 ft)
24W Power Supply (Cord Lengths: 58" input/PPS & 58" output)	4 = 24W	2 = 24W	1 = 18W

SAFETY INFORMATION

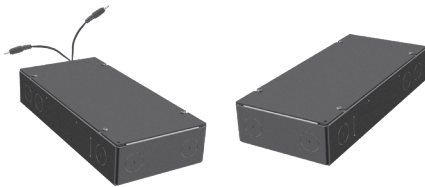
The **UNDERLINE EDGE** is for indoor use only.

The LED module is not protected against short circuits, overload or overheating.

Therefore you must use an electronically stabilized power supply that offers protection against the previously mentioned safety risks. Our power supplies are specifically designed with protection features for safe operation.

WARNING: If a non Solid State Luminaires power supply is used to power the fixtures, the manufacturer warranty will be voided.

UN POWER SUPPLY



UNPower Supply (Interior Only): UNV 120 - 277 VAC
UN50i / UN50i-2CC / UN100i / UN100i-2CC

The following table illustrates how many fixtures each listed power supply can power. (Max 36W / segment)

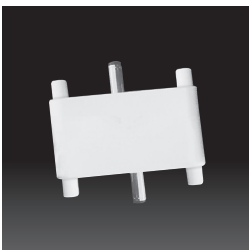
Power Supply (UNV 120 - 277 VAC)	UNLE-1 (1 ft)	UNLE-2 (2 ft)	UNLE-3 (3 ft)
UN50W Power Supply	8 = 48W	4 = 48W	2 = 36W
UN100W Power Supply	16 = 96W	8 = 96W	4 = 72W

Dimensions - Length (11.2in) Width (5.2in) Height (2.1in)

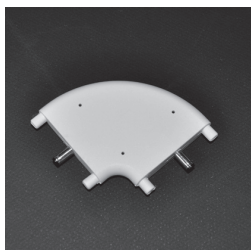
Weight - 2.85Lbs

Add **DIM** option for 0-10V dimming capability.

ACCESSORIES - AVAILABLE IN BLACK (STANDARD) OR WHITE (-WH)



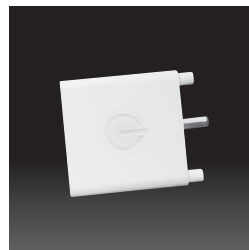
SC-UE Straight Connector



C90E 90° Corner Connector



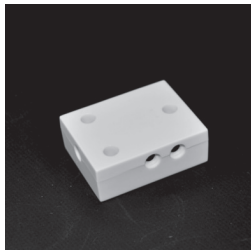
C90VE 90° Vertical Connector



TDE Touch Control On/Off



CC Connector Cable (3' or 6')



4S 4-Way Splitter

